



PAULDING COUNTY SCHOOL DISTRICT QUARTERLY FINANCIAL REPORT

Engage. Inspire. Prepare.

Student success for ALL starts with a passion for effective stewardship of taxpayer dollars. The budget is the catalyst for creating safe schools and engaging environments, where students are engaged, inspired and prepared for their future – a place where students can thrive.

INTEGRITY. Results of the most recent financial audit were outstanding and the District received Georgia Department of Audits and Accounts' *Excellence in Financial Reporting Award*.

STEWARDSHIP. PCSD received a 4-Star *Financial Efficiency Rating*, which measures a district's per-pupil spending in relation to the academic achievements of its students. Only 12 of 180 districts, or 7%, scored better than PCSD.

Version 11.12 a

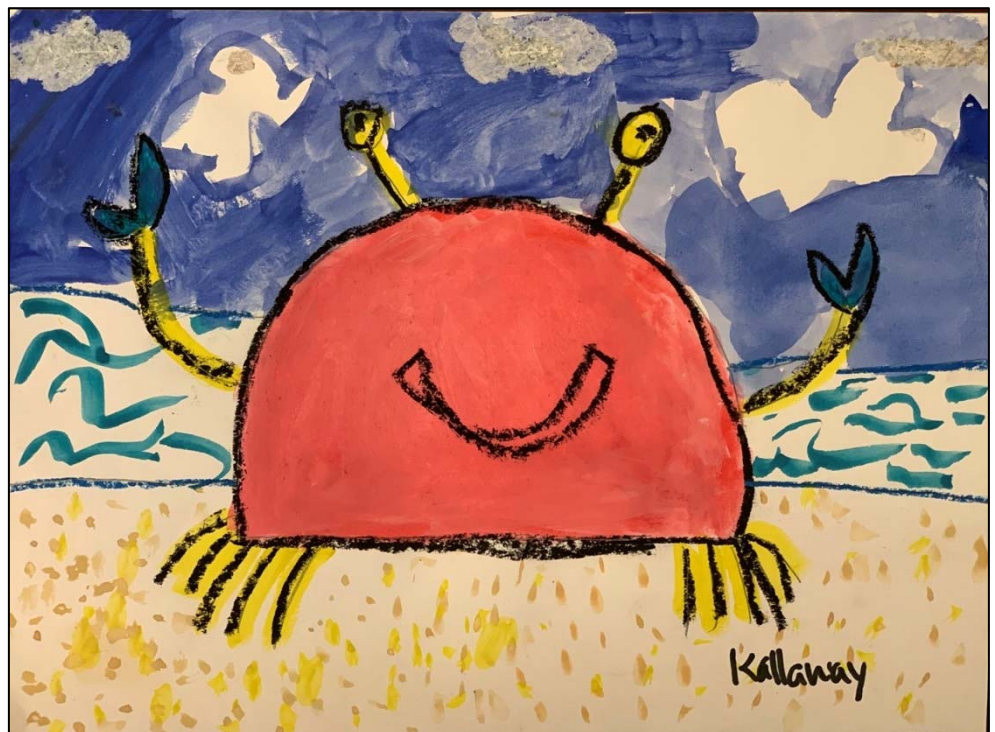


For the Month and
4th Quarter Ended
June 30, 2022

Pending Yearend and Audit Entries

3236 Atlanta Highway
Dallas, Georgia 30132
www.paulding.k12.ga.us

Featured Artwork



Kallaway Speck, 2nd Grade at Russom Elementary School (2021-2022)

Table of Contents

Introduction	3
Fund Descriptions and Structure	3
General Fund.....	4
General Fund Key Metrics.....	4
General Fund Financial Statements	6
Special Revenue Fund	7
Indirect Cost Charged to Various Programs.....	7
Current Grant Awards Over \$10,000	8
School Nutrition Program	11
Special Revenue Fund Financial Statements	12
Local School Receipts and Expenditures.....	13
Capital Projects Fund	14
SPLOST V Key Metrics	14
SPLOST VI (Including 2020 Bonds) Key Metrics	15
Capital Projects Fund Financial Statements.....	19
Debt and Debt Service	20
Debt Service Fund Financial Statements	21
Supplemental Reports	22
Position (Allotment) Control.....	22
Vacancy Report	23
Current Enrollment	24
Procurement Points-of-Information	25
Budget Adjustments over \$100,000 Point-of-Information.....	29
Grants and Donations Points-of-Information	31
Appendix	32
General Fund Footnotes	32
Encumbrance Report	33
General Fund Year Elapsed versus Year-to-Date Expenditures	34
Glossary.....	35


Introduction

Dear Paulding County School Board and Community Stakeholders,

We are pleased to present a Quarterly Financial Report for the current fiscal year. The purpose of this report is to provide board members and the community a quarterly update on the financial condition of the District.

We would like to thank those that support the District financially. We take the stewardship of your resources very seriously. We will honor your sacrifice by efficiently and effectively managing our funds and by passionately pursuing our mission to engage, inspire and prepare ALL students for success today and tomorrow.

Sincerely,



Steve Barnette
Superintendent



Miriam Hall
Director of Finance

Fund Descriptions and Structure

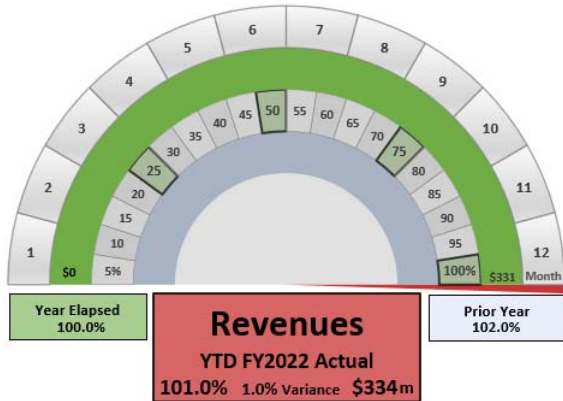
The District uses many funds to account for a multitude of financial transactions. However, these quarterly financial reports focus on the District's most significant funds, Governmental Funds. The District reports the following appropriated major governmental funds:

- The **General Fund** is the District's primary operating fund. It accounts for and reports all financial resources not accounted for and reported in another fund.
 - The **Special Revenue Fund** accounts for resources that are legally restricted for specific purposes. Although reported within the General Fund for audited financial reporting, the Special Revenue Fund is presented separately for budget appropriation and internal reporting purposes.
- The **Capital Projects Fund** accounts for and reports financial resources including Education Special Purpose Local Option Sales Tax (E-SPLOST), bond proceeds and grants that are restricted, committed or assigned for capital outlay expenditures, including the acquisition or construction of capital facilities and other capital assets.
- The **Debt Service Fund** accounts for and reports financial resources that are restricted, committed or assigned including taxes (property and sales) legally restricted for the payment of general long-term principal and interest and paying agent's fees.

General Fund

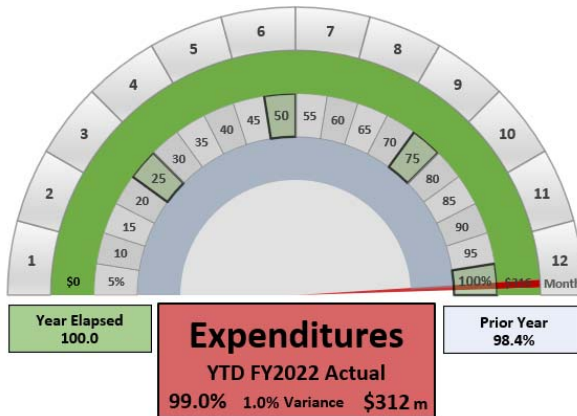
The **General Fund** is the District's primary operating fund. It accounts for and reports all financial resources not accounted for and reported in another fund. Reflects funds 100 - 101.

General Fund Key Metrics



Revenue. YTD revenue of \$334.3 million or 101.0% of the annual budget, resulting in a variance to budget of \$3.3 million or 1.0%.

Year-to-date Revenues are represented by the red line, Year Elapsed (green) is the amount of the budget year elapsed (in 1/12 increments) and Prior Year (blue) refers to the prior fiscal year.



Budget. Amended budget of \$315.5 million, an increase of \$0.7 million or 0.2%.

Expenditures. YTD expenditures of \$312.2 million or 99.0% of the annual budget, resulting in a variance to budget of \$3.3 million or 1.0%.

Year-to-date Expenditures are represented by the red line, Year Elapsed (green) is the amount of budget year elapsed (in 1/12 increments) and Prior Year (blue) refers to the prior fiscal year.



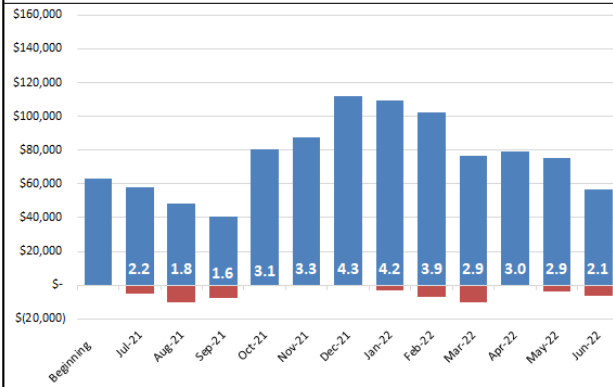
Fund Balance. YTD revenue exceeds expenditures by \$22.1 million and, after other sources and uses, fund balance has decreased \$6.2 million to \$58.1 million or \$56.5 million unassigned.

Fund Balance (Unassigned) is represented by the red line, with a year-end target of 1.5 months of budgeted expenditures.

Paulding County School District Quarterly Financial Report

2022

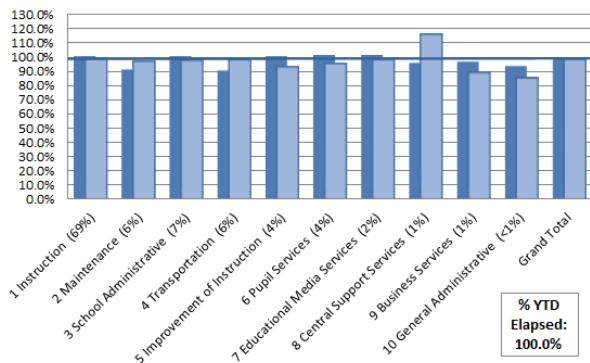
Fund Balance and Revenue Under Expenditures ('000)



	FY2021	FY2022
July	1.6	2.2
August	1.4	1.8
September	0.1	1.6
October	0.1	3.1
November	3.7	3.3
December	4.5	4.3
January	4.7	4.2
February	3.1	3.9
March	3.0	2.9
April	2.9	3.0
May	2.7	2.9
June	2.6	2.1

This report shows a trend of unassigned fund balance throughout the fiscal year. The red bars reflect a loss of fund balance due to expenditures exceeding revenue in that particular month. This report also indicates the number of months in budgeted expenditures in fund balance, with a year-end target of 1.5 months. June is based on next year's budget.

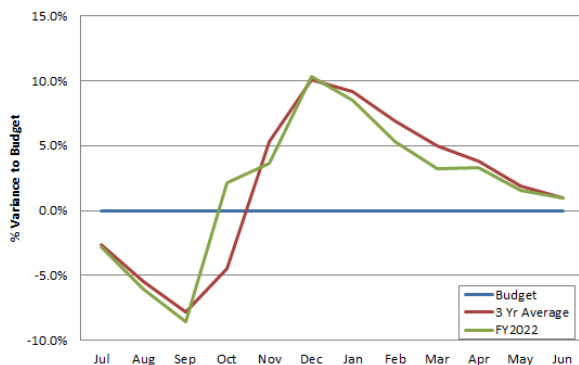
Percentage of Year Elapsed versus Year-to-Date Percentage of Expenditures



YTD (Jun)	FY2021	FY2022
Instruction	99.7%	99.6%
Maintenance	90.9%	97.5%
School Admin	100.0%	97.8%
Transportation	90.0%	99.1%
Improv Instruct	99.8%	93.8%
Pupil Services	101.0%	95.6%
Media Services	100.7%	99.0%
Cent Supt Svc	95.8%	116.4%
Business Svc	96.5%	89.5%
General Admin	93.4%	85.7%
Grand Total	98.4%	99.0%

This report compares the percentage of the year elapsed against the year-to-date percentage of expenditures (budgeted), for the current and prior fiscal year. Organized by the top 10 functions and grand total, it is designed to detect material percentage inconsistencies against budget and the prior year. One month equals 8.3% of the budget year.

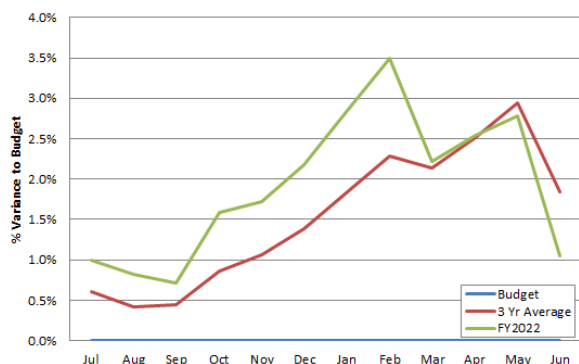
Percentage Variance of YTD Revenue to Budget



	FY2021	FY2022
July	-2.7%	-2.8%
August	-5.3%	-6.0%
September	-8.1%	-8.6%
October	-8.3%	2.2%
November	5.5%	3.7%
December	8.5%	10.4%
January	8.9%	8.5%
February	7.2%	5.4%
March	5.5%	3.2%
April	4.0%	3.3%
May	2.3%	1.5%
June	1.9%	1.0%

This report shows a budget variance trend for revenue, by percentage. The red line reflects an average of the prior three fiscal years. The green line is the current fiscal year. The blue line represents a 0% variance to budget. The year-end revenue target variance is less than or equal to 2% of the budget. This report is designed to monitor revenue trending.

Percentage Variance of YTD Expenditures to Budget



	FY2021	FY2022
July	0.1%	1.0%
August	0.4%	0.8%
September	0.4%	0.7%
October	0.5%	1.6%
November	0.9%	1.7%
December	1.1%	2.2%
January	1.6%	2.9%
February	1.8%	3.5%
March	2.1%	2.2%
April	2.1%	2.5%
May	2.5%	2.8%
June	1.9%	1.0%

This report shows a budget variance trend for expenditures, by percentage. The red line reflects an average of the prior three fiscal years. The green line is the current fiscal year. The blue line represents a 0% variance to budget. The year-end expenditure target variance is less than or equal to 2% of the budget. This report is designed to monitor expenditure trending.

Paulding County School District
Statement of Revenues, Expenditures and Changes in Fund Balance - General Fund
For the Month and Year-to-Date Ended June 2022

(in thousands)	Budget			Actual		100.0% Year Elapsed		
	Original ¹	Amended	Variance [*]	June	Year-to-Date	% YTD to	\$ Variance	
						Budget	to Budget	
Revenue:								
Local Taxes	\$ 114,308	\$ 116,308	\$ 2,000	\$ 2,332	\$ 116,457	100.1%	\$ 149	
Other Local Sources	1,281	1,281	-	1,303	3,214	250.9%	1,933	
State Sources	199,195	213,439	14,244	21,886	214,651	100.6%	1,212	
Total Revenue	314,784	331,028	16,244	25,521	334,322	101.0%	3,294	
Expenditures:								
Instruction	217,115	217,059	55 ³	20,158	216,247	99.6%	812	
Pupil Services	12,367	12,378	(11) ³	1,009	11,836	95.6%	542	
Improvement of Instruction	12,191	11,965	226 ^{2,3}	614	11,219	93.8%	746	
Instructional Staff Training	468	725	(257) ^{2,3}	161	584	80.5%	141	
Educational Media Services	5,335	5,337	(2) ³	446	5,283	99.0%	54	
General Administrative	1,529	1,529	1 ³	123	1,310	85.7%	219	
School Administrative	20,782	20,642	140 ^{2,3}	1,505	20,180	97.8%	462	
Business Services	2,337	2,374	(37) ³	171	2,125	89.5%	249	
Maintenance	20,098	20,414	(316) ^{2,3}	3,012	19,899	97.5%	515	
Transportation	18,667	19,054	(387) ^{2,3}	4,051	18,874	99.1%	180	
Central Support Services	3,708	3,732	(24) ³	416	4,344	116.4%	(612)	
Other Support Services	187	187	(1) ³	3	185	98.8%	2	
Total Expenditures	314,784	315,514	(731)	31,788	312,205	99.0%	3,309	
Revenue Over (Under) Expend.	-	15,514	15,514	(6,267)	22,117		6,603	
Other Sources (Uses):								
Transfers In	-	-	-	-	-			
Transfers Out	-	-	-	(12,533)	(28,360)			
Total Other Sources (Uses)	-	-	-	(12,533)	(28,360)		-	
Change in Fund Balance	\$ -	\$ 15,514	\$ (15,514)	\$ (18,800)	\$ (6,243)		\$ 6,603	
Unassigned	62,578	62,578			62,740			
Assigned	1,000	1,000			1,000			
Nonspendable	723	723			561			
Ending Fund Balances	\$ 64,301	\$ 79,815			\$ 58,058			

General Fund Financial Statements

Exhibits:

- A-1 Statement of Revenues, Expenditures and Changes in Fund Balance
Summary by Object
- A-2 Balance Sheet

Paulding County School District
Statement of Revenues, Expenditures and Changes in Fund Balance - General Fund
For the Month and Year-to-Date Ended June 2022

	% of Budget	Amended Budget	Year-to-Date	% YTD to Budget	* \$ Variance to Budget
Revenue:					
State and Federal Sources	35.1%	\$ 116,308,000	\$ 116,457,242	100.1%	\$ 149,242
Local Taxes	0.4%	1,280,800	3,213,934	250.9%	1,933,134
Other Local Sources	64.5%	213,439,263	214,650,519	100.6%	1,211,256
Total Revenue	100.0%	\$ 331,028,063	\$ 334,321,695	101.0%	\$ 3,293,632
Expenditures:					
1000 Instruction	68.8%	\$ 217,059,497	216,247,124.96	99.6%	\$ 812,372
2100 Pupil Services	3.9%	12,378,325	11,835,529.12	95.6%	542,796
2210 Improvement of Instruction	3.8%	11,964,641	11,218,835.24	93.8%	745,806
2213 Instructional Staff Training	0.2%	725,021	583,874.56	80.5%	141,147
2220 Media Services	1.7%	5,336,751	5,283,111.58	99.0%	53,640
2300 General Administration	0.5%	1,528,705	1,310,376.76	85.7%	218,329
2400 School Administration	6.5%	20,642,240	20,180,227.08	97.8%	462,013
2500 Business Services	0.8%	2,373,524	2,124,576.70	89.5%	248,948
2600 Maintenance	6.5%	20,413,679	19,899,369.41	97.5%	514,309
2700 Transportation	6.0%	19,054,338	18,873,699.66	99.1%	180,638
2800 Central Support Services	1.2%	3,731,717	4,343,821.03	116.4%	(612,104)
2900 Other Support Services	0.1%	187,315	184,561.46	98.5%	2,754
3100 SNP	0.0%	118,705	118,705	100.0%	-
3300 Community Services	0.0%	-	473	0.0%	-
Total Expenditures	100.0%	\$ 315,514,459	\$ 312,204,285.50	99.0%	3,310,174
Revenue Over/(Under) Expenditures		\$ 15,513,604	\$ 22,117,409		\$ 6,603,805
Other Sources (Uses):					
Transfers In		-	100	0.0%	-
Transfers Out		-	(28,360,334)	0.0%	-
Total Other Sources (Uses)		-	(28,360,234)	0.0%	-
Change in Fund Balance		\$ 15,513,604	\$ (6,242,824)		\$ 6,603,805
Summary by State Object:					
100 Salaries	62.0%	\$ 195,522,824	\$ 197,076,301	100.8%	\$ (1,553,477)
200 Benefits	25.8%	81,279,331	80,112,163	98.6%	1,167,168
Total Salaries & Benefits	87.7%	\$ 276,802,154	\$ 277,188,463	100.1%	\$ (386,309)
Other Expenditures:					
300 Purchased Professional & Technical Services	1.9%	\$ 6,119,821	\$ 5,632,642	92.0%	\$ 487,180
321 Contracted Service - Teachers	0.0%	7,500	1,129	15.1%	6,371
332 Drug And Alcohol Testing, Fingerprinting	0.0%	23,051	31,076	134.8%	(8,025)
334 Bus Driver Physicals	0.0%	26,000	21,725	83.6%	4,275
361 Per Diem And Fees	0.0%	4,200	-	0.0%	4,200
340 Professional Legal Services	0.1%	161,500	134,281	83.1%	27,219
410 Water, Sewer And Cleaning Services	0.4%	1,391,539	1,325,711	95.3%	65,829
430 Repair and Maintenance Services	0.7%	2,288,469	1,941,548	84.8%	346,921
432 Repair And Maintenance Services - Technology Related	0.0%	-	-	0.0%	-
442 Rental Of Equipment And Vehicles	0.0%	6,888	6,412	93.1%	476
444 Other Rentals	0.0%	2,765	2,322	84.0%	443
490 Other Purchased Property Services	0.0%	35,500	27,472	77.4%	8,028
520 Insurance (Other Than Employee Benefits)	0.3%	932,609	932,609	100.0%	-
530 Communication	0.2%	760,572	706,721	92.9%	53,851
532 Communication - Web-Based Subscriptions And Licenses	0.8%	2,416,336	2,245,307	92.9%	171,029
563 Tuition To Private Sources	0.0%	-	-	0.0%	-
569 Other Tuition	0.0%	24,160	24,160	100.0%	-
580 Travel - Employees	0.1%	286,851	193,330	67.4%	93,521
595 Other Purchased Services	0.3%	907,566	899,357	99.1%	8,209
610 Supplies	0.8%	2,464,295	2,226,778	90.4%	237,517
611 Supplies - Technology Related	0.1%	210,467	197,658	93.9%	12,809
612 Computer Software	0.3%	1,011,726	598,794	59.2%	412,932
615 Expendable Equipment	0.4%	1,233,451	936,920	76.0%	296,531
616 Expendable Computer Equipment	1.6%	5,124,254	4,901,153	95.6%	223,101
620 Energy	2.1%	6,691,377	6,557,645	98.0%	133,732
640 Digital/Electronic Textbooks	0.0%	96,226	96,226	100.0%	-
641 Textbooks - Printed	0.4%	1,274,854	1,177,449	92.4%	97,406
642 Books (Other Than Textbooks) And Periodicals	0.1%	420,991	397,414	94.4%	23,577
715 Land Improvements	0.0%	-	-	0.0%	-
720 Building Acquisition, Construction, And Improvemen	0.0%	-	-	0.0%	-
730 Purchase Of Equipment - Other Than Buses And Compu	0.1%	164,636	123,998	75.3%	40,638
732 Purchase Or Lease-Purchase Of Buses	1.0%	3,266,690	3,074,690	94.1%	192,000
734 Purchase Or Lease-Purchase Of Equipment - Technology Related	0.0%	1,500	-	0.0%	1,500
810 Dues And Fees	0.2%	490,887	414,452	84.4%	76,435
811 Regional Or County Library Dues	0.0%	24,999	20,930	83.7%	4,070
812 Resa Fees	0.1%	164,813	164,813	100.0%	-
890 Other Expenditures	0.2%	675,812	1,103	0.2%	674,709
Total State Objects	100.0%	\$ 315,514,459	\$ 312,204,285.50	99.0%	\$ 3,310,174

* \$ Variance to Budget may differ from Operating Statement due to rounding

Paulding County School District
Balance Sheet - General Fund
For the Month and Year-to-Date Ended June 2022

Assets

Cash and Investments	\$ 73,389,324
Accounts Receivable	-
Interest	-
Inter-fund	1,376,811
Taxes	2,945,625
Intergovernmental - Federal	3,040
Intergovernmental - State	26,014,320
Intergovernmental - Local	-
Payroll/Benefits	14,070
Other	45,945
Advance to Other Funds	-
Prepaid Expenditures	561,405
Inventory	-
Total Assets	\$ 104,350,540

Liabilities

Accounts Payable	
Accounts Payable	\$ 9,553,607
Payroll/Benefits/Deductions	36,738,325
Other	-
Total Liabilities	\$ 46,291,932

Fund Balance

Non-spendable	\$ 561,405
Assigned	1,000,000
Unassigned	56,497,204
	\$ 58,058,608

Special Revenue Fund

The **Special Revenue Fund** accounts for resources that are legally restricted for specific purposes. Although reported within the General Fund for audited financial reporting, the Special Revenue Fund is presented separately for budget appropriation and internal reporting purposes. Grants and SNP account for the majority of Special Revenue Fund activity and are highlighted below. Reflects funds 400 - 999. School Nutrition Program (Fund 600) is reported separately on the following page.

PCSD Indirect Cost Rates

Restricted IDC Rate = 2.03%

Unrestricted IDC Rate = 11.10%

The District typically charges an indirect cost to any grant over \$100,000.

What are indirect costs?

Indirect costs represent the expenses of doing business that are not readily identified with a particular grant, contract, project, or activity, but are necessary for the general operation of the District.

Restricted rates are established for use on programs that prohibit supplanting, where funding is intended to "supplement and not supplant" other state or local funding. The restricted rate filters out costs that would be incurred whether any particular grant program was in operation.

Indirect Cost Charged to Various Programs

June 30, 2022 as of August 16, 2022

Program	Program Name	FY22 Budget	Total Indirect Cost	Indirect Cost YTD Q4
1736	CLSD Birth-5Yrs L4GA	744,309	14,809	10,843
1737	CLSD Kindergarten - 5th Grade L4GA	1,360,747	27,074	26,143
1738	CLSD Middle School L4GA	745,831	14,839	11,034
1739	CLSD High School L4GA	931,186	18,527	17,307
1750	Title I-A Improving the Academic Achieve of the Disad	3,996,998	79,525	75,279
1779	Title IV-A Student Support and Academic Enrichment	286,542	5,701	2,426
8779	Title IV-A Student Support and Academic Enrichment	168,867	3,360	3,356
1784	Title II-A, Improving Teacher Quality	943,769	18,777	12,261
1816	Title III-A Language Instruction for English Learners	107,354	2,136	1,686
1902	ESSER III ARP Homeless Children and Youth II	45,000	895	749
2824	IDEA 611 Special Ed Flowthrough	6,616,012	131,633	119,368
2838	IDEA ARP 611	1,340,670	26,674	4,029
4180	CRRSA Act ESSER II Funds	10,263,952	1,025,471	1,025,471
4190	ARP Act ESSER III	4,684,353	468,014	331,056
4201	ESSER III ARP LL L4GA Birth to 5	65,070	1,295	182
4202	ESSER III ARP LL L4GA Kindergarten to 6th	149,771	2,980	2,292
4203	ESSER III ARP LL L4GA Middle School	76,288	1,518	966
4204	ESSER III ARP LL L4GA High School	17,950	357	260
				\$1,644,708
	*School Nutrition			\$ 824,164
	Total			\$2,468,872

*Indirect costs will be booked at year end

Current Grant Awards Over \$10,000

June 30, 2022 as of August 16, 2022

	Original Budget	Current Budget	
Awarded:			
QBE Categorical Grant: Nursing	\$ 615,158	\$ 615,158	GF
QBE Categorical Grant: Transportation	1,474,568	1,474,568	GF
QBE Categorical Grant: Equalization	31,190,943	31,190,943	GF
CLSD L4GA (5 year grant)	3,915,265	3,782,073	SRF
Title I-A: Improving the Academic Achieve of the Disadvantaged Grant	3,430,621	3,996,998	SRF
Education for Homeless Children and Youth	40,000	49,360	SRF
Title II-A: Improving Teacher Quality Grant	626,075	943,769	SRF
Title III: A Language Instruction for English Learners Grant	92,157	165,009	SRF
Title IV-A: Student Support and Academic Enrichment Grant	251,257	455,409	SRF
IDEA 611 Special Ed Flowthrough & Parent Mentor Grant	4,982,033	6,630,412	SRF
Federal and State Special Education Preschool Grants	818,334	886,876	GF & SRF
Special Education High Cost Fund Grant	75,000	78,200	SRF
Perkins V CTAE Grants	227,834	239,080	SRF
CTAE Extended Year Grant	14,515	16,262	GF
CTAE Supervision Grant	25,738	29,017	GF
CTAE Apprenticeship Grant	32,637	36,486	GF
CTAE Extended Day Grants	126,632	123,223	GF
CTAE Industry Certification Grant	-	10,000	GF
ROTC Grant	484,857	484,857	SRF
Math and Science Supplement Grant	177,681	138,997	GF
Family Connections Grant	48,000	48,000	GF
CARES Act School Nurse	-	65,651	SRF
CRRSA Act ESSER II Funds	10,626,928	10,263,952	SRF
ARP Act ESSER III Funds	-	4,684,353	SRF
ESSER III ARP Homeless Children and Youth	-	45,000	SRF
ESSER III ARP L4GA Supplemental Grant	-	309,079	SRF
ESSER III ARP Readiness in Literacy	-	227,995	SRF
IDEA ARP 611 & IDEA ARP 619	-	1,427,224	SRF
Emergency Connectivity Fund	-	832,800	GF
Sources of Strength	-	32,000	GF
Hygiene Grant	-	21,894	GF
Emergency Operational Costs Grant	-	420,840	SRF
School Lunch Equipment	-	36,993	SRF
Warehouse Storage and Delivery Grant	-	66,149	SRF
Total	\$ 59,276,233	\$69,828,627	

Note: General Fund (GF), Special Revenue Fund (SRF) and Capital Projects Fund (CPF)

The Literacy for Learning, Living, and Leading in Georgia (L4GA) Grant

The second round of funding for Georgia was awarded a total of \$179,174,766 over five years to continue the L4GA initiative. The award takes into account the poverty level of a community, the percentage of students reading below grade level, the recent rate of growth in the number of students reading above grade level, and whether a school is identified for support from the Department of Education's School Improvement team. Paulding County School District was awarded \$19.5 million for the five year grant period.

	FY 21	FY 22	FY 23	FY 24	FY 25	Total Grant
Birth-5	\$ 425,759	\$ 744,309	\$ 585,034	\$ 585,034	\$ 585,033	\$ 2,925,169
Elementary	1,950,533	1,360,747	1,655,640	1,655,640	1,655,640	8,278,200
Middle	818,569	745,831	782,200	782,200	782,200	3,911,000
High	852,599	931,186	891,178	891,000	891,000	4,456,963
	\$ 4,047,461	\$ 3,782,073	\$ 3,914,052	\$ 3,913,874	\$ 3,913,873	\$ 19,571,332

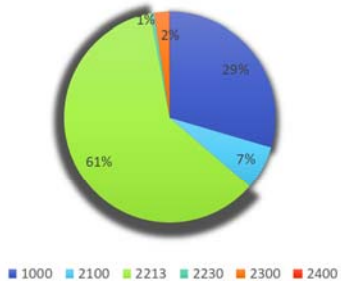
ESSER III ARP L4GA Supplement Grant

This supplement grant for L4GA is funded from the ESSER III ARP plan. The intent of these funds is to serve the schools in L4GA Cohort 1. Paulding County School District was awarded \$1.9 million for the three year grant period.

	FY 22	FY 23	FY 24	Total Grant
Birth-5	\$ 65,070	\$ 141,299	\$ 141,299	\$ 347,668
Elementary	149,771	403,979	403,979	957,729
Middle	76,288	129,353	129,353	334,994
High	17,950	134,021	134,021	285,992
	\$ 309,079	\$ 808,652	\$ 808,652	\$ 1,926,383

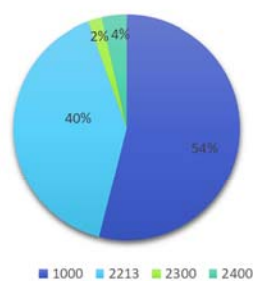
L4GA Round 2 Funding FY 22

Budget by Function



L4GA Supplement Grant FY 22

Budget by Function



Function Code	Description
1000 Instruction:	Instruction includes activities dealing directly with the interaction between teachers and students.
2100 Pupil Services:	Activities designed to assess and improve the well-being of students and to supplement the teaching process.
2210 Improvement of Instructional Services:	Technical and logistical support activities designed to aid teachers in developing the curriculum, preparing and using special curriculum materials, and understanding the various techniques that stimulate and motivate students.
2213 Instructional Staff Training:	Activities associated with the professional development and training of instructional personnel.
2220 Educational Media Services:	Activities concerned with directing, managing and operating educational media centers.
2230 Federal Grant Administration:	Activities concerned with the demands of Federal Programs grant management.
2300 General	Activities concerned with establishing and administering policy for operating the LUA.
2400 School	Activities concerned with overall administrative responsibility for school operations

Elementary and Secondary School Emergency Relief Fund (ESSER I, II, and III)

In response to the COVID-19 pandemic, the Coronavirus Aid, Recovery, and Economic Security Act (CARES) created and funded the Elementary and Secondary School Emergency Relief Fund (ESSER I) in March 2020. The Coronavirus Response and Relief Supplemental Appropriations Act (CRRSA) provided a second round of Elementary and Secondary School Emergency Relief Fund (ESSER II) funding in January 2021. The American Rescue Plan Act (ARP) provided a third round of Elementary and Secondary School Emergency Relief Fund (ESSER III) funding in March 2021. The chart below highlights differences between the three rounds of funding and the Paulding County School District allocation.

Funding Source	ESSER I (4155)	ESSER II (4180)	ESSER III (4190)
Funding Source	Coronavirus Aid, Recovery, and	Coronavirus Response and Relief	American Rescue Plan Act (ARP) funded the
Availability Start Date	3/13/2020	3/13/2020	3/13/2020
Availability End Date	9/30/2021	9/30/2022	9/30/2023
Carry Over End Date	9/30/2022	9/30/2023	9/30/2024
Equitable Services	Yes	Separate	Separate
Fund Use Requirements	No percentage requirements. Must follow federal and GaDOE Guidelines.	No percentage requirements. Must follow federal and GaDOE Guidelines.	An LEA must reserve at least 20% of funds to address learning loss through the implementation of evidence-based interventions (summer learning, extended day or afterschool programs). These programs must respond to students' academic, social, and emotional needs and address the disproportionate impact of COVID-19 on underrepresented student Subgroups. The remaining ARP ESSER funds may be used for the same purchases allowed under ESSER and ESSER II.
Reopening Plan	No requirements for establishing a reopening plan.	No requirements for establishing a reopening plan.	Within 30 days of receiving funds, the LEA must publish on its website a plan for the safe return to in-person instruction and continuity of services. Before making the plan publicly available, the LEA must seek public comment on the plan.
Budget Summary*	ESSER I Budget Summary	ESSER II Budget Summary	ESSER III Budget Summary
Allocation	ESSER I Allocation \$ 3,015,293	ESSER II Allocation 12,626,316	ESSER III Allocation \$ 28,379,169
Expenditures:	Student & Staff Laptops (3,008,858) Equitable Services (6,435)	2021 & 2022 Summer Remed (1,342,807) FY2022 PVA (5,659,632) Student Support (743,498) FY2022 Mitigation & Safety (560,658) FY2022 Instruction (675,548) Math Intervention (1,784,535) Payroll-Related Costs (511,179) Grant Support (118,625) Indirect Cost (1,229,834)	2021 & 2022 Summer Re (54,549) FY 23-24 PVA (11,600,581) Literacy Support (3,536,081) Student Support (1,713,229) Mitigation & Safety (574,820) Instructional Resources (384,217) Math Intervention (4,746,336) Payroll-Related Costs (2,535,220) Grant Support (390,111) Indirect Cost (2,844,026)
Remaining	\$ -	\$ -	\$ -

* As of June 30, 2022

Paulding County School District
Quarterly Financial Report

2022

School Nutrition Program

Special Revenue Fund 600

Paulding County School District						
Statement of Revenues, Expenditures, and Changes in Fund Balance - School Nutrition Program						
For the Month and Year-to-Date Ended June 2022						
100.0% Year Elapsed						
(in thousands)	Budget			Actual	% YTD to	\$ Variance
	Original ¹	Amended	Variance	Year-to-Date	Budget	to Budget
Revenue:						
Student Sales-Lunch	\$ 2,664,102	\$ 2,664,102	\$ -	\$ (17,540)	-0.7%	\$ (2,681,642)
Student Sales-Breakfast	349,203	349,203	-	163	0.0%	(349,040)
Student Sales-ASP Snack Rev	141,808	141,808	-	83,440	58.8%	(58,368)
Suppl Sales-Breakfast/Lunch	2,150,970	2,150,970	-	1,234,889	57.4%	(916,081)
Adult-Breakfast/Lunch Sales	207,893	207,893	-	125,647	60.4%	(82,246)
SNP Service Grant	338,955	338,955	-	766,668	226.2%	427,713
Child Nutrition Service Grant	7,895,064	7,895,064	-	19,827,360	251.1%	11,932,296
USDA Commodities Revenues	1,011,922	1,011,922	-	1,191,885	117.8%	179,963
Other Fed Grants through DOE	-	81,023	81,023 ²	81,023	100.0%	-
Other Local Revenues	-	-	-	47,278	-	-
CARES Act ESSER Revenue	-	1,067,701	1,067,701 ²	1,067,701	100.0%	-
Sale or Comp for Loss of FA	-	-	-	2,153	-	-
Total Revenue	14,759,917	15,908,641	1,148,724	24,410,667	153.4%	8,502,027
Expenditures:						
Salaries	4,642,778	4,642,778	-	5,175,760	111.5%	(532,982)
Benefits	2,771,287	2,306,902	(464,385) ²	2,392,355	103.7%	(85,453)
ProfSrv Consultant	3,000	3,000	-	-	0.0%	3,000
ProfSrv Other	19,998	19,998	-	19,926	99.6%	72
Copy Machine Maint	7,500	7,500	-	2,827	37.7%	4,673
SFS Food Equip Maintenance	81,170	106,370	25,200 ²	101,363	95.3%	5,007
Insurance	27,971	31,291	3,320 ²	31,291	100.0%	-
Communication	21,900	21,900	-	21,864	99.8%	36
Postage	4,000	4,000	-	1,031	25.8%	2,969
District Managed Communication	2,204	2,204	-	1,991	90.3%	213
Travel	49,312	50,812	1,500 ²	29,044	57.2%	21,768
Supplies	566,058	719,147	153,089 ²	684,751	95.2%	34,396
SFS Marketing	8,600	8,600	-	1,969	22.9%	6,631
SFS Uniforms	33,468	33,468	-	24,694	73.8%	8,774
SFS Educational Materials	2,822	2,872	50 ²	2,845	99.1%	27
Computer Software	43,956	50,296	6,340 ²	43,545	86.6%	6,750
Building Const, Improvement	-	-	-	-	-	-
Purchase of Equipment	580,666	211,904	(368,762) ²	211,285	99.7%	619
Expendable Equip > 1000	39,688	29,845	(9,843) ²	18,212	61.0%	11,632
Computer Equip <10000	28,156	36,051	7,895 ²	33,450	92.8%	2,601
Utilities & Waste Mgt	485,419	524,614	39,195 ²	473,893	90.3%	50,721
Food Purchases	6,495,588	7,140,414	644,826 ²	7,140,114	100.0%	301
SFS Commodity Hauling	56,981	66,084	9,103 ²	66,083	100.0%	1
Dues and Fees	4,174	4,986	812 ²	4,986	100.0%	-
Federal Indirect Cost Charges	730,864	828,521	97,657 ²	824,164	99.5%	4,358
Other Expenditures	-	-	-	-	-	-
Total Expenditures	16,707,560	16,853,557	520,223	17,307,443	102.7%	(453,886)
Revenue Over (Under) Expend.	(1,947,643)	(944,917)	\$ 1,002,726	7,103,224		8,048,141
Other Sources (Uses):						
Transfers In	743,043	1,102,228	359,185	1,100,291	99.8%	(1,937)
Transfers Out	(743,043)	(1,102,228)	(359,185)	(1,100,291)	99.8%	1,937
Total Other Sources (Uses)	-	-	-	-	0.0%	-
Change in Fund Balance	(1,947,643)	(944,917)	1,002,726	7,103,224	-751.7%	8,048,141
Unassigned	4,051,704	4,051,704	-	4,051,704	-	-
Assigned	-	-	-	-	-	-
Nonspendable	1,110,243	1,110,243	-	393,661	-	-
Ending Fund Balances	\$ 3,214,304	\$ 4,217,030		\$ 11,548,589		
Footnotes						
¹ As adopted by the BOE on June 8, 2021						
² Offsetting expenditure transfers, \$0.00 net budget impact						
Beginning Fund Balance per FY2021						

Special Revenue Fund Financial Statements

Excludes SNP Special Revenue Fund 600 (see SNP section above)

Exhibits:

- B-1 Statement of Revenues, Expenditures and Changes in Fund Balance
Summary by Object
- B-2 Balance Sheet

Paulding County School District
Statement of Revenues, Expenditures and Changes in Fund Balance - Special Revenue Funds (Excluding 500 & 600)
For the Month and Year-to-Date Ended June 2022

		% of Budget	Amended Budget	Year-to-Date	% YTD to Budget	* \$ Variance to Budget
Revenue:						
Total Revenue		100.0%	\$ 35,747,072	\$ 20,856,147	58.3%	\$ (14,890,924)
Expenditures:						
1000	Instruction	56.4%	\$ 20,271,055	\$ 17,584,103	86.7%	\$ 2,686,952
2100	Pupil Services	9.9%	3,553,339	3,138,352	88.3%	414,987
2210	Improvement of Instruction	1.8%	635,496	611,727	96.3%	23,768
2213	Instructional Staff Training	18.3%	6,563,254	4,904,799	74.7%	1,658,455
2220	Media Services	0.2%	75,250	75,406	100.2%	(156)
2230	Federal Grant Administration	1.5%	539,485	487,051	90.3%	52,434
2300	General Administration	5.2%	1,873,815	1,664,938	88.9%	208,878
2400	School Administration	1.7%	615,759	693,694	112.7%	(77,934)
2500	Business Services	0.1%	36,496	37,040	101.5%	(545)
2600	Maintenance	0.8%	284,341	285,039	100.2%	(698)
2700	Transportation	3.7%	1,341,537	1,257,494	93.7%	84,043
2800	Central Support Services	0.2%	84,269	82,248	97.6%	2,021
2900	Other Support Services	0.1%	48,000	48,000	100.0%	-
3300	Community Services	0.0%	-	-	0.0%	-
5100	Debt Service	0.0%	-	-	0.0%	-
4000	Acquisition & Construction	0.0%	-	-	0.0%	-
3100	SNP	0.0%	3,898	3,898	100.0%	-
3200	Enterprise Operations	0.0%	-	-	0.0%	-
Total Expenditures		100.0%	\$ 35,925,995	\$ 30,873,789	85.9%	\$ 5,052,206
Revenue Over/(Under) Expenditures			\$ (178,923)	\$ (10,017,642)		\$ (9,838,719)
Other Sources (Uses):						
Transfers In			-	323,600	0.0%	(323,600)
Transfers Out			-	(323,700)	0.0%	323,700
Total Other Sources (Uses)			-	(100)	0.0%	100
Change in Fund Balance			\$ (178,923)	\$ (10,017,742)		\$ (9,838,619)
Summary by State Object:						
100	Salaries	51.6%	\$ 18,547,678	\$ 15,834,173	85.4%	\$ 2,713,505
200	Benefits	17.4%	6,268,461	5,740,561	91.6%	527,900
	Total Salaries & Benefits	69.1%	\$ 24,816,138	\$ 21,574,734	86.9%	\$ 3,241,405
	Other Expenditures:					
300	Purchased Professional & Technical Services	10.0%	\$ 3,577,302	\$ 2,922,181	81.7%	\$ 655,121
321	Contracted Service - Teachers	0.5%	170,979	21,405	12.5%	149,574
332	Drug And Alcohol Testing, Fingerprinting	0.0%	-	-	0.0%	-
334	Bus Driver Physicals	0.0%	-	-	0.0%	-
340	Professional Legal Services	0.0%	-	-	0.0%	-
361	Per Diem And Fees	0.0%	-	-	0.0%	-
410	Water, Sewer And Cleaning Services	0.0%	-	-	0.0%	-
430	Repair and Maintenance Services	0.0%	5,650	3,946	69.8%	1,704
441	Rental Of Land Or Buildings	0.0%	-	-	0.0%	-
442	Rental Of Equipment And Vehicles	0.0%	-	-	0.0%	-
490	Other Purchased Property Services	0.0%	-	-	0.0%	-
519	Student Transportation Purchased From Other Sources	0.0%	-	-	0.0%	-
520	Insurance (Other Than Employee Benefits)	0.0%	-	-	0.0%	-
530	Communication	0.0%	10,671	9,185	86.1%	1,486
532	Communication - Web-Based Subscriptions And Licenses	2.0%	725,713	684,326	94.3%	41,387
561	Tuition To Other Georgia Luas	0.0%	-	-	0.0%	-
563	Tuition To Private Sources	0.0%	-	-	0.0%	-
569	Other Tuition	0.0%	-	-	0.0%	-
580	Travel - Employees	0.2%	82,474	54,733	66.4%	27,741
595	Other Purchased Services	0.0%	8,392	7,849	93.5%	543
610	Supplies	1.3%	475,657	332,522	69.9%	143,136
611	Supplies - Technology Related	0.2%	79,265	57,002	71.9%	22,264
612	Computer Software	0.0%	6,000	4,938	82.3%	1,063
615	Expendable Equipment	0.7%	259,123	198,796	76.7%	60,327
616	Expendable Computer Equipment	3.5%	1,263,379	1,227,723	97.2%	35,656
620	Energy	0.6%	206,059	193,152	93.7%	12,907
640	Digital/Electronic Textbooks	0.4%	132,000	132,000	100.0%	-
641	Textbooks - Printed	1.2%	423,988	421,713	99.5%	2,274
642	Books (Other Than Textbooks) And Periodicals	4.1%	1,486,349	1,156,148	77.8%	330,201
730	Purchase Of Equipment - Other Than Buses And Compu	0.1%	23,350	23,350	100.0%	-
732	Purchase Or Lease-Purchase Of Buses	0.0%	-	-	0.0%	-
734	Purchase Or Lease-Purchase Of Equipment - Technology	0.0%	-	-	0.0%	-
742	Depreciation Expense-Buildings	0.0%	-	-	0.0%	-
810	Dues And Fees	0.6%	226,803	146,300	64.5%	80,503
811	Regional Or County Library Dues	0.0%	-	-	0.0%	-
812	Resa Fees	0.0%	-	-	0.0%	-
834	Amortization Of Premium And Discount On Issuance Of E	0.0%	-	-	0.0%	-
880	Federal Indirect Cost Charges	5.1%	1,846,704	1,647,517	89.2%	199,186
890	Other Expenditures	0.3%	100,000	54,270	54.3%	45,730
Total State Objects		100.0%	\$ 35,925,995	\$ 30,873,789	85.9%	\$ 5,052,206

Paulding County School District
Balance Sheet - Special Revenue Funds (Excluding 500 & 600)
For the Month and Year-to-Date Ended June 2022

Assets		Liabilities	
Cash and Investments	\$ (10,273,506)	Accounts Payable	
Accounts Receivable	-	Accounts Payable	\$ 608,714
Interest	-	Payroll/Benefits/Deductions	2,909,668
Inter-fund	-	Other	-
Taxes	-	Total Liabilities	\$ 3,518,382
Intergovernmental - Federal	5,026,948		
Intergovernmental - State	-	Fund Balance	
Intergovernmental - Local	-	Non-spendable	\$ 66,104
Payroll/Benefits	-	Assigned	-
Other	388	Unassigned	(8,764,552)
Advance to Other Funds	-		\$ (8,698,448)
Prepaid Expenditures	66,104		
Inventory	-		
Total Assets	\$ (5,180,066)		

Local School Receipts and Expenditures

O.C.G.A. 20-2-962 requires public schools to provide a quarterly report to the local board of education immediately upon the end of each quarter of the fiscal year. These reports must contain an account of all receipts and expenditures of such funds during the past quarter.

Local School Receipts and Expenditures				
<i>Year-to-Date as of the 4th Quarter Ended June 30, 2022</i>				
Group	School	Receipts	Expenditures	Receipts Over / (Under) Expenditures
E	Abney ES (34)	\$ 146,998	\$ 132,015	\$ 14,984
E	Allgood ES (20)	84,881	79,723	5,158
E	Baggett ES (23)	98,168	84,682	13,486
E	BHickory ES (31)	154,998	141,791	13,207
E	Dallas ES (2)	74,221	70,819	3,402
E	Dugan ES (26)	94,690	108,072	(13,382)
E	Hiram ES (3)	73,792	59,200	14,592
E	Hutchens ES (33)	82,466	82,643	(177)
E	McGarity ES (5)	131,474	109,878	21,596
E	Nebo ES (18)	110,861	83,641	27,220
E	New GA ES (6)	37,076	39,634	(2,558)
E	Northside ES (15)	100,707	106,720	(6,013)
E	Panter ES (16)	88,096	85,585	2,511
E	Poole ES (25)	89,688	73,560	16,128
E	Ragsdale ES (32)	107,972	94,289	13,684
E	Roberts ES (19)	91,874	85,239	6,635
E	Russom ES (24)	70,443	64,947	5,496
E	Shelton ES (14)	208,038	199,836	8,201
E	Union ES (8)	60,150	79,496	(19,347)
H	East HS (12)	839,491	833,070	6,421
H	Hiram HS (21)	419,368	409,485	9,884
H	North HS (30)	896,383	862,443	33,940
H	PC HS (13)	464,177	425,026	39,151
H	South HS (28)	718,955	641,275	77,680
M	Austin MS (27)	78,102	73,554	4,548
M	Dobbins MS (17)	87,107	83,854	3,254
M	East MS (9)	117,392	107,272	10,121
M	HJones MS (10)	48,753	41,514	7,239
M	McClure MS (29)	143,385	123,046	20,339
M	Moses MS (22)	101,534	93,489	8,046
M	Ritch MS (36)	66,863	50,415	16,447
M	Scoggins MS (35)	111,246	82,599	28,646
M	South MS (11)	69,104	70,886	(1,782)
Other	New Hope (91)	9,460	21,669	(12,209)
		\$6,077,913	\$ 5,701,367	\$ 376,546

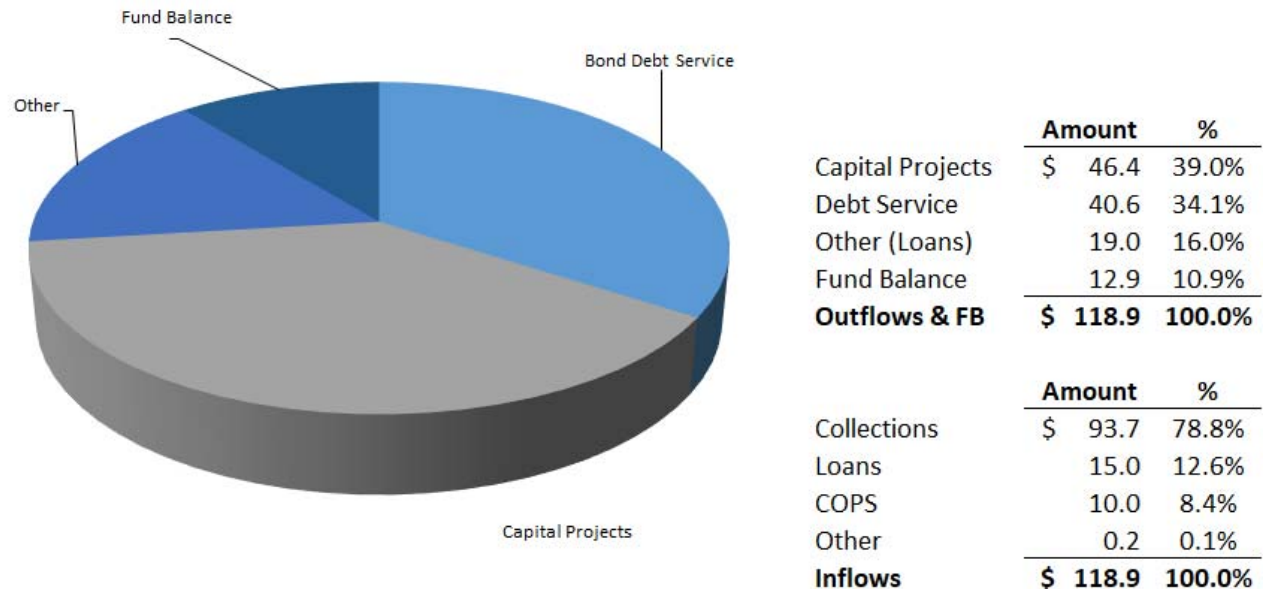
Capital Projects Fund

The **Capital Projects Fund** accounts for and reports financial resources including Education Special Purpose Local Option Sales Tax (E-SPLOST), bond proceeds and grants from Georgia State Financing and Investment Commission (including the State Capital Outlay Program) that are restricted, committed or assigned for capital outlay expenditures, including the acquisition or construction of capital facilities and other capital assets. Reflects funds 300 - 399.

Special Purpose Local Option Sales Tax for education (E-SPLOST), a one-cent sales tax to help fund capital improvements and debt repayment, is the primary funding source for capital projects, in addition to various state grants, including the State Capital Outlay Program. E-SPLOST accounts for the majority of Capital Projects Fund activity and is highlighted below.

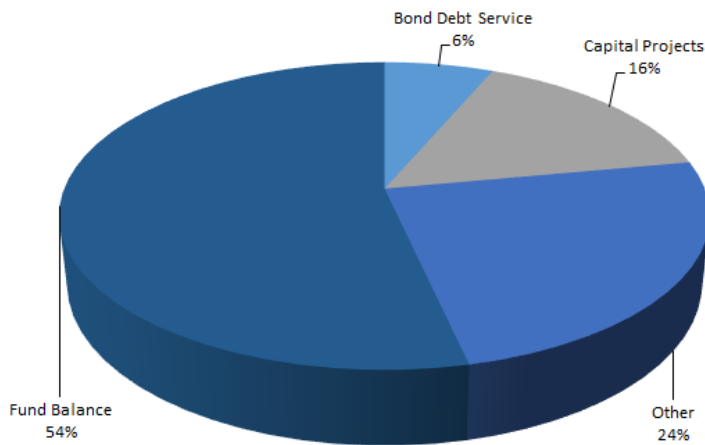
SPLOST V Key Metrics

SPLOST V collections ended April 2021 with cumulative collections of \$93.7 million or 112.6% of the projections. SPLOST V proceeds have funded Capital Projects totaling \$46.4 million and has a fund balance of \$12.9 million.



SPLOST VI (Including 2020 Bonds) Key Metrics

SPLOST VI collections began May 2021. Cumulative SPLOST collections total \$32 million. SPLOST VI proceeds and the 2020 Bond issuance have funded Capital Projects totaling \$13.1 million, debt service of \$5.4 million and has an ending fund balance of \$44.7 million.

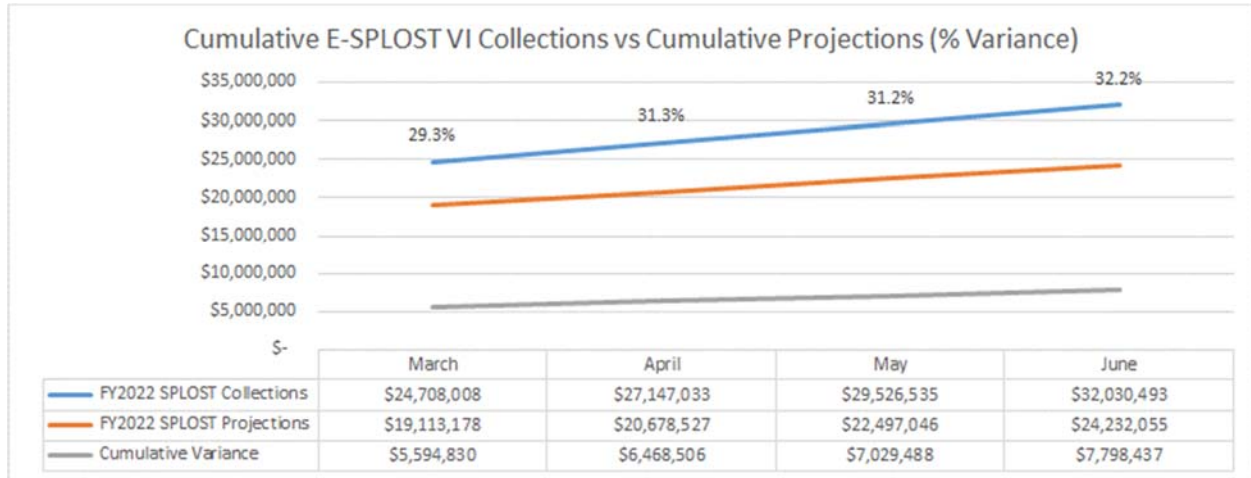


SPLOST VI Cumulative Activity (millions, w/ Bond)

	Amount	%
Capital Projects	\$ 13.1	61.1%
Debt Service	5.4	25.1%
Bond Transfer	20.4	95.2%
Fund Balance	44.7	208.7%
Outflows & FB	\$ 83.5	390.0%

	Amount	%
Bond Proceeds	\$ 30.0	35.9%
Collections	32.0	38.3%
Reimbursement	-	0.0%
Bond Transfer	20.4	24.4%
Transfer In	1.1	1.3%
Inflows	\$ 83.5	100.0%

SPLOST VI Collections



E-SPLOST VI Overview

June 30, 2022 (as of August 18, 2022)

	Original Collection Projections**	Actual Collection Results**
	May 2021 - April 2026 (60 Months)	May 2021 - April 2026 (60 Months)
Total Collection Estimate	\$ 113,250 *	
Collections To-Date	\$ 24,232 *	\$ 32,030
Percentage Collections To-Date	21.4%	28.3%
% Variance		32.2%
\$ Variance		\$ 7,798

* Based on original estimates

** Actual SPLOST VI period is April 2021 - March 2026 (60 Months)

E-SPLOST VI Fund

Other Inflows:

Interest	\$	21
Capital Outlay Program Reimbursement		-
Transfer In		20,384
Other **		1,010
Total Cash Inflows	\$	21,416

Outflows:

Bond Debt Service	\$	4,036
Capital Projects		992
Other **		10
Total Cash Outflows	\$	5,038

SPLOST VI Balance	\$	16,378
--------------------------	-----------	---------------

SPLOST Minimum Balance Check

Cash and Projected 12-Month Inflows:

SPLOST Current Balance	\$	16,378
60% of Next 12-Month's Projected Collections *		10,158
Total Current Balance & Projected Inflows	\$	26,536

Projected 12-Month Cash Outflows:

Next 12-Month's Principle & Interest	\$	7,864
Current Capital Projects (4 Months)		4,822
Total Projected Outflows	\$	12,686

Total Over Minimum	\$	13,849
---------------------------	-----------	---------------

* Based on original estimates

(in thousands)

** Includes Loan from SPLOST V to SPLOST IV

E-SPLOST VI Bond Fund

Other Inflows:

Interest	\$	76
Capital Outlay Program Reimbursement		-
Other ***		30,010
Total Cash Inflows	\$	62,116

Outflows:

Bond Debt Service	\$	1,332
Capital Projects		12,085
Other ***		20,384
Total Cash Outflows	\$	33,801

SPLOST VI Bond Balance

\$ 28,315

*** Includes Bond Issuance and Prepaids

(in thousands)

Capital Projects Fund Financial Statements

Exhibits:

- C-1 Statement of Revenues, Expenditures and Changes in Fund Balance
 Summary by Object
- C-2 Balance Sheet

Paulding County School District
Statement of Revenues, Expenditures and Changes in Fund Balance - Capital Projects Funds
For the Month and Year-to-Date Ended June 2022

		% of Budget	Amended Budget	Year-to-Date	% YTD to Budget	* \$ Variance to Budget
Revenue:						
Total Revenue		100.0%	\$ 21,572,847	\$ 28,885,191	133.9%	\$ 7,312,344
Expenditures:						
1000 Instruction		0.0%	\$ -	\$ -	0.0%	\$ -
2100 Pupil Services		0.0%	-	-	0.0%	-
2210 Improvement of Instruction		0.0%	-	-	0.0%	-
2213 Instructional Staff Training		0.0%	-	-	0.0%	-
2220 Media Services		0.0%	-	-	0.0%	-
2230 Federal Grant Administration		0.0%	-	-	0.0%	-
2300 General Administration		0.0%	-	-	0.0%	-
2400 School Administration		0.0%	-	-	0.0%	-
2500 Business Services		0.0%	-	-	0.0%	-
2600 Maintenance		0.0%	-	-	0.0%	-
2700 Transportation		0.0%	-	-	0.0%	-
2800 Central Support Services		0.0%	-	-	0.0%	-
2900 Other Support Services		0.0%	-	-	0.0%	-
3300 Community Services		0.0%	-	-	0.0%	-
5100 Debt Service		0.0%	-	-	0.0%	-
4000 Acquisition & Construction		100.0%	13,303,643	6,674,914	50.2%	6,628,729
3100 SNP		0.0%	-	-	0.0%	-
3200 Enterprise Operations		0.0%	-	-	0.0%	-
Total Expenditures		100.0%	\$ 13,303,643	\$ 6,674,914	50.2%	\$ 6,628,729
Revenue Over/(Under) Expenditures			\$ 8,269,204	\$ 22,210,277		\$ 13,941,073
Other Sources (Uses):						
Transfers In			1,000,000	52,250,751	5225.1%	(51,250,751)
Transfers Out			(10,518,347)	(33,412,571)	317.7%	22,894,224
Total Other Sources (Uses)			(9,518,347)	18,838,180	-197.9%	(28,356,527)
Change in Fund Balance			\$ (1,249,143)	\$ 41,048,457		\$ (14,415,454)
Capital Projects Summary by State Object:						
300 Purchased Professional & Technical Services		7.7%	\$ 1,027,539	\$ 1,227,293	119.4%	\$ (199,755)
410 Water, Sewer And Cleaning Services		0.0%	-	-	0.0%	-
520 Insurance (Other Than Employee Benefits)		0.1%	10,000	10,000	100.0%	-
595 Other Purchased Services		0.0%	-	32,302	0.0%	(32,302)
610 Supplies		0.0%	-	4,509	0.0%	(4,509)
611 Supplies - Technology Related		0.1%	17,891	20,365	113.8%	(2,474)
615 Expendable Equipment		5.3%	700,076	128,321	18.3%	571,755
616 Expendable Computer Equipment		5.3%	705,424	32,278	4.6%	673,146
720 Building Acquisition, Construction, And Improvemen		78.1%	10,389,580	5,135,863	49.4%	5,253,716
730 Purchase Of Equipment - Other Than Buses And Compu		3.4%	453,133	83,983	18.5%	369,150
732 Purchase Or Lease-Purchase Of Buses		0.0%	-	-	0.0%	-
810 Dues And Fees		0.0%	-	-	0.0%	-
830 Interest		0.0%	-	-	0.0%	-
		100.0%	\$ 13,303,643	\$ 6,674,914	50.2%	6,628,729

Paulding County School District
Balance Sheet - Capital Projects Funds
For the Month and Year-to-Date Ended June 2022

Assets		Liabilities	
Cash and Investments	\$ 92,435,239	Accounts Payable	
Accounts Receivable	-	Accounts Payable	\$ 1,751,600
Interest	-	Payroll/Benefits/Deductions	-
Inter-fund	-	Other	-
Taxes	2,511,226	Total Liabilities	\$ 1,751,600
Intergovernmental - Federal	-		
Intergovernmental - State	-		
Intergovernmental - Local	-	Fund Balance	
Payroll/Benefits	-	Non-spendable	\$ 234,668
Other	(24,265)	Assigned	-
Advance to Other Funds	-	Unassigned	93,170,600
Prepaid Expenditures	234,668		\$ 93,405,268
Inventory	-		
Total Assets	\$ 95,156,868		

Debt and Debt Service

The **Debt Service Fund** accounts for and reports financial resources that are restricted, committed or assigned including taxes (property and sales) legally restricted for the payment of general long-term principal and interest and paying agent's fees. Reflects funds 200 - 299.

In March 2022, **2022 Series** (refunding debt) was issued to refund the a portion of the 2014 Series Bonds. The final result of the refunding program, assuming the School District exercises its option to replace the Series 2022 bond with the lower-interest Series 2025 bond on February 1, 2025, is gross savings of \$3,505,855, or present value savings of \$3,143,676 if future savings are discounted into current dollars. This is in addition to the savings generated from the 2014 refunding.

Outstanding bonds include the **2014 Series non-callable bonds and the 2022 Series** (refunding debt), which includes 76,790 \$1,000 par value bonds or **\$76,790,000**.

Date	Maturity	Total Interest	Total Debt Service	Outstanding Principal
8/1 2021	-	1,650,825	1,650,825	81,675,000
2/1 2022	4,885,000	1,650,825	6,535,825	76,790,000
8/1 2022	-	890,490	890,490	76,790,000
2/1 2023	5,880,000	424,580	6,304,580	70,910,000
8/1 2023	-	287,848	287,848	70,910,000
2/1 2024	5,940,000	287,848	6,227,848	64,970,000
8/1 2024	-	148,362	148,362	64,970,000
2/1 2025	6,250,000	148,362	6,398,362	58,720,000
8/1 2025	-	525,544	525,544	58,720,000
2/1 2026	6,870,000	525,544	7,395,544	51,850,000
8/1 2026	-	464,058	464,058	51,850,000
2/1 2027	7,000,000	464,058	7,464,058	44,850,000
8/1 2027	-	401,408	401,408	44,850,000
2/1 2028	7,135,000	401,408	7,536,408	37,715,000
8/1 2028	-	337,549	337,549	37,715,000
2/1 2029	7,275,000	337,549	7,612,549	30,440,000
8/1 2029	-	272,438	272,438	30,440,000
2/1 2030	7,415,000	272,438	7,687,438	23,025,000
8/1 2030	-	206,074	206,074	23,025,000
2/1 2031	7,545,000	206,074	7,751,074	15,480,000
8/1 2031	-	138,546	138,546	15,480,000
2/1 2032	7,675,000	138,546	7,813,546	7,805,000
8/1 2032	-	69,855	69,855	7,805,000
2/1 2033	7,805,000	69,855	7,874,855	\$ -
	\$ 81,675,000	\$ 10,320,082	\$ 91,995,082	

FY2022 Activity

* Starting 8/1/22, includes Non-Callable Series 2014 and Series 2022

Other outstanding bonds include the **2020 Series** (Sales Tax Bond), which includes 26,275 \$1,000 par value bonds or \$26,275,000. These bonds carry coupon rates of approximately 3% to 5%.

SPLOST VI - Series 2020

Date		Principal	Maturity	Coupon	Interest	Total Interest	Total Debt Service
2/1	2021	\$ 26,275,000					
8/1	2021	26,275,000			\$ 165,247	\$ 748,472	\$ 748,472
2/1	2022	26,275,000			72,975	\$ 583,225	583,225
8/1	2022	26,275,000	\$ 4,865,000	3.00%	72,975	583,225	5,448,225
2/1	2023	21,410,000			100,000	510,250	510,250
8/1	2023	21,410,000	5,000,000	4.00%	100,000	510,250	5,510,250
2/1	2024	16,410,000			130,000	410,250	410,250
8/1	2024	16,410,000	5,200,000	5.00%	130,000	410,250	5,610,250
2/1	2025	11,210,000			136,750	280,250	280,250
8/1	2025	11,210,000	5,470,000	5.00%	136,750	280,250	5,750,250
2/1	2026	5,740,000			143,500	143,500	143,500
8/1	2026	\$ 5,740,000	5,740,000	5.00%	143,500	143,500	5,883,500
			\$ 26,275,000			\$ 4,603,422	\$ 30,878,422

FY2022 Activity

Debt Service Fund Financial Statements

Exhibits:

- D-1 Statement of Revenues, Expenditures and Changes in Fund Balance
Summary by Object
- D-2 Balance Sheet

Paulding County School District
Statement of Revenues, Expenditures and Changes in Fund Balance - Debt Service Funds
For the Month and Year-to-Date Ended June 2022

	% of Budget	Amended Budget	Year-to-Date	% YTD to Budget	* \$ Variance to Budget
Revenue:					
Total Revenue	100.0%	\$ 5,000	\$ 205	4.1%	\$ (4,795)
Expenditures:					
1000 Instruction	0.0%	\$ -	\$ -	0.0%	\$ -
2100 Pupil Services	0.0%	-	-	0.0%	-
2210 Improvement of Instruction	0.0%	-	-	0.0%	-
2213 Instructional Staff Training	0.0%	-	-	0.0%	-
2220 Media Services	0.0%	-	-	0.0%	-
2230 Federal Grant Administration	0.0%	-	-	0.0%	-
2300 General Administration	0.0%	-	-	0.0%	-
2400 School Administration	0.0%	-	-	0.0%	-
2500 Business Services	0.0%	-	-	0.0%	-
2600 Maintenance	0.0%	-	-	0.0%	-
2700 Transportation	0.0%	-	-	0.0%	-
2800 Central Support Services	0.0%	-	-	0.0%	-
2900 Other Support Services	0.0%	-	-	0.0%	-
3300 Community Services	0.0%	-	-	0.0%	-
5100 Debt Service	100.0%	9,523,347	9,525,653	100.0%	(2,306)
4000 Acquisition & Construction	0.0%	-	-	0.0%	-
3100 SNP	0.0%	-	-	0.0%	-
3200 Enterprise Operations	0.0%	-	-	0.0%	-
Total Expenditures	100.0%	\$ 9,523,347	\$ 9,525,653	100.0%	\$ (2,306)
Revenue Over/(Under) Expenditures		\$ (9,518,347)	\$ (9,525,449)		\$ (7,102)
Other Sources (Uses):					
Transfers In		9,518,347	9,522,153	100.0%	(3,806)
Transfers Out		-	-	0.0%	-
Total Other Sources (Uses)		9,518,347	9,522,153	100.0%	(3,806)
Change in Fund Balance		\$ -	\$ (3,295)		\$ (10,908)
Debt Service Summary by State Object:					
810 Dues And Fees	0.1%	\$ 5,000	\$ 7,306	146.1%	\$ (2,306)
830 Interest	48.7%	4,633,347	4,633,347	100.0%	(0)
831 Redemption Of Principal	51.3%	4,885,000	4,885,000	100.0%	-
	100.0%	\$ 9,523,347	\$ 9,525,653	100.0%	\$ (2,306)

Paulding County School District
Balance Sheet - Debt Service Funds
For the Month and Year-to-Date Ended June 2022

Assets		Liabilities	
Cash and Investments	\$ 3,325,804	Accounts Payable	
Accounts Receivable	-	Accounts Payable	\$ 3,500
Interest	-	Payroll/Benefits/Deductions	-
Inter-fund	-	Other	-
Taxes	-	Total Liabilities	<u>\$ 3,500</u>
Intergovernmental - Federal	-		
Intergovernmental - State	-		
Intergovernmental - Local	-	Fund Balance	
Payroll/Benefits	-	Non-spendable	\$ -
Other	-	Assigned	-
Advance to Other Funds	-	Unassigned	3,322,304
Prepaid Expenditures	-		<u><u>\$ 3,322,304</u></u>
Inventory	-		
Total Assets	<u>\$ 3,325,804</u>		

Supplemental Reports

Position (Allotment) Control

The District has 3,799 full-time equivalent position allotments (as of June 30, 2022).

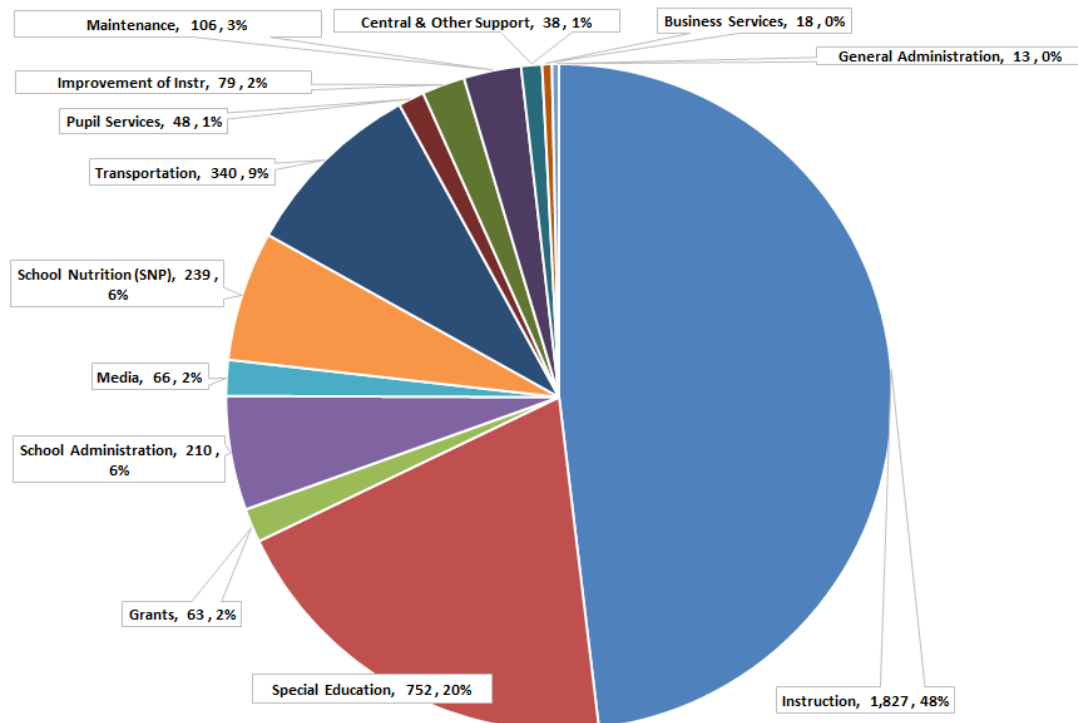
Positions coded to the function of Instruction total 1,827 or 48% of all allotments. Special Education or ESEP, which also includes instructional positions, totals 752 or 20% of all allotments.

Transportation, SNP and School Administration complete the top five employment centers with 340, 239 and 210 allotments, respectively. In total, they accounted for 21% of all allotments. All remaining employment centers are cumulatively 11% of all position allotments (431).

The District has made 246 allotment changes year-to-date, resulting in a net increase of 31, primarily in the areas of General Education and Special Education or ESEP and were funded by grant awards and the existing growth reserve (contingency).

Positions	Original	Current	Change
Instruction	1,818	1,827	9
Special Education	739	752	13
Grants	61	63	1
School Administration	208	210	2
Media	66	66	-
School Nutrition (SNP)	239	239	-
Transportation	340	340	-
Pupil Services	48	48	-
Improvement of Instr	80	79	(1)
Maintenance	107	106	(1)
Central & Other Support	32	38	6
Business Services	17	18	1
General Administration	12	13	1
Total Positions	3,768	3,799	31
Instruction per Student	16.4	16.5	
ESEP per Student	6.1	6.3	
Local School per Student	10.3	10.3	
Other per Student	46.7	46.9	
SNP per Student	124.4	126.1	

Position Allotments Breakdown



Vacancy Report

Year-to-Date as of the 4th Quarter Ended June 30, 2022

	Beginning	Changes							Current		
	Actual	General Fund		Grants			Change	Total	Actual	Vacancy	%
		GenEd	ESEP	ESEP	Other	SNP					
School Based Allotments:											
Elementary Schools	1,464	12	1	5	1	-	19	1,484	1,432	(51.5)	-3.5%
Middle Schools	712	-	(1)	-	-	-	(1)	711	679	(31.8)	-4.5%
High Schools	769	2	(1)	4	-	-	5	774	746	(28.0)	-3.6%
Total School Based Allotments	2,945	14	(1)	9	1	-	23	2,969	2,857	(111.2)	-3.7%
Other Direct Instruction & Support											
Curriculum & School Improvement *	28	-	-	-	-	-	-	28	28	-	0.0%
Student Services	80	(1)	-	3	-	-	2	82	72	(10.0)	-12.1%
New Hope Education Center	95	(10)	2	(1)	9	-	-	95	92	(3.0)	-3.2%
Total (84%)	3,149	3	1	11	10	-	25	3,174	3,050	(124.2)	-3.9%
1) School Leadership Division	8	4	-	-	-	-	4	12	8	(4.0)	-33.3%
Central Registration	7	-	-	-	-	-	-	7	7	-	0.0%
2) Teaching & Learning Division	5	(1)	-	-	-	-	(1)	4	4	-	0.0%
Curriculum	21	-	-	-	-	-	-	21	21	-	0.0%
School Improvement	30	-	-	-	1	-	1	31	29	(2.0)	-6.5%
Student Services (FC 94)	24	-	-	-	-	-	-	24	24	-	0.0%
CTAE	3	-	-	-	-	-	-	3	3	-	0.0%
3) Operations Division	34	-	-	-	-	-	-	34	33	(1.0)	-2.9%
Maintenance	38	-	-	-	-	-	-	38	32	(6.0)	-15.8%
Transportation	361	-	-	-	-	-	-	361	283	(78.0)	-21.6%
SNP	12	-	-	-	-	-	-	12	12	-	0.0%
4) Technology Division	35	-	-	-	-	-	-	35	35	-	0.0%
5) Business Services Division	20	1	-	-	(1)	-	-	20	18	(2.0)	-10.0%
6) Human Resources Division	10	-	-	-	-	-	-	10	9	(1.0)	-10.0%
Superintendent's Office	3	2	-	-	-	-	2	5	5	-	0.0%
Board and PEF	7	-	-	-	-	-	-	7	7	(0.5)	-6.5%
Grand Total	3,768	9	1	11	11	-	31	3,799	3,580	(218.7)	-5.8%

* Instruction and support allotments based at a non-school facility that directly support students

Paulding County School District
Quarterly Financial Report

2022

Current Enrollment

Local Education Agencies in Georgia must report enrollment to the State Department of Education twice during the school year for funding purposes. As of the October 2021 enrollment count, the District had 31,129 full-time equivalent students, which is 994 greater than FY2022 budget projections and a year-over-year increase of \$1,394.

Elementary Schools		2020-2021					2021-2022		
		Rank	2020	2021	Var	% Var	2022	Growth	% Var
34 Abney Elementary	NE	1	1,320	1,239	(81)	-6.1%	1,225	(14)	-1.1%
20 Allgood Elementary	SW	4	899	814	(85)	-9.5%	872	58	7.1%
23 Baggett Elementary	SE	12	616	603	(13)	-2.1%	609	6	1.0%
31 Burnt Hickory Elementary	NE	3	1,050	1,026	(24)	-2.3%	1,086	60	5.8%
2 Dallas Elementary*	NW	18	444	431	(13)	-2.9%	492	61	14.2%
26 Dugan Elementary	SE	7	668	611	(57)	-8.5%	629	18	2.9%
3 Hiram Elementary	SE	6	808	737	(71)	-8.8%	763	26	3.5%
33 Hutchens Elementary	SE	8	666	637	(29)	-4.4%	662	25	3.9%
5 McGarity Elementary	NE	11	617	579	(38)	-6.2%	607	28	4.8%
18 Nebo Elementary	SE	10	632	598	(34)	-5.4%	616	18	3.0%
6 New GA Elementary*	SW	19	332	347	15	4.5%	405	58	16.7%
15 Northside Elementary	NW	13	572	580	8	1.4%	657	77	13.3%
16 Panter Elementary	SE	15	533	506	(27)	-5.1%	521	15	3.0%
25 Poole Elementary	NW	17	450	420	(30)	-6.7%	454	34	8.1%
32 Ragsdale Elementary	SW	14	556	545	(11)	-2.0%	627	82	15.0%
19 Roberts Elementary	NE	9	644	576	(68)	-10.6%	653	77	13.4%
24 Russom Elementary	NE	5	868	844	(24)	-2.8%	946	102	12.1%
14 Shelton Elementary	NE	2	1,205	1,200	(5)	-0.4%	1,405	205	17.1%
8 Union Elementary*	SW	16	498	455	(43)	-8.6%	474	19	4.2%
All Total Elementary		19	13,378	12,748	(630)	-4.7%	13,703	955	7.5%

Middle Schools		2020-2021					2021-2022		
		Rank	2020	2021	Var	% Var	2022	Growth	% Var
27 Austin Middle	SE	3	856	802	(54)	-6.3%	783	(19)	-2.4%
17 Dobbins Middle	SE	7	666	607	(59)	-8.9%	611	4	0.7%
9 East Paulding Middle	NE	2	901	887	(14)	-1.6%	882	(5)	-0.6%
10 Herschel Jones Middle	NW	4	812	818	6	0.7%	804	(14)	-1.7%
22 Moses Middle	NE	5	774	773	(1)	-0.1%	878	105	13.6%
29 McClure Middle	NE	1	1,424	1,472	48	3.4%	1,511	39	2.6%
36 Ritch Middle	NE	8	640	697	57	8.9%	700	3	0.4%
35 Scoggins Middle	SW	6	728	745	17	2.3%	743	(2)	-0.3%
11 South Paulding Middle	SE	9	481	472	(9)	-1.9%	473	1	0.2%
All Total Middle School		9	7,282	7,273	(9)	-0.1%	7,385	112	1.5%

High Schools		2020-2021					2021-2022		
		Rank	2020	2021	Var	% Var	2022	Growth	% Var
12 East Paulding High	NE	4	1,783	1,766	(17)	-1.0%	1,893	127	7.2%
21 Hiram High	SE	5	1,473	1,452	(21)	-1.4%	1,458	6	0.4%
30 North Paulding High	NE	1	2,570	2,698	128	5.0%	2,836	138	5.1%
13 Paulding County High	SE	2	1,898	1,906	8	0.4%	1,932	26	1.4%
28 South Paulding High	SE	3	1,842	1,892	50	2.7%	1,922	30	1.6%
All Total High School		5	9,566	9,714	148	1.5%	10,041	327	3.4%

Total Enrollment		2020-2021					2021-2022		
		Rank	2020	2021	Var	% Var	2022	Growth	% Var
Total			30,226	29,735	(491)	-1.6%	31,129	1,394	4.7%

Procurement Points-of-Information

Board Policy DJED: Bids and Quotations

Emergency Purchases

The Superintendent or duly appointed representative is authorized to approve expenditures for any emergency purchase of goods and/or services necessary to maintain the safe and effective operation of the District. These purchases are limited to the scope of the emergency or hazardous condition. Emergency purchases greater than \$5,000 should be reported to the Board of Education as a Point-of-Information (POI) on a quarterly basis.

PO #	PEID	Vendor Name	Request Date	PO Amt	Description:
P143938	V10021	SATELLITE SHELTERS INC.	5/26/2022	\$ 467,832	Emergency Purchase of mobile classrooms for SY23

Sole/Single Source Purchases

The Superintendent or duly appointed representative is authorized to utilize noncompetitive negotiations to purchase goods and/or services whereby only one known source exists or only one single supplier can fulfill the procurement requirements. Sole/single source purchases greater than \$5,000 should be reported to the Board of Education as a Point-of-Information (POI) on a quarterly basis.

PO #	PEID	Vendor Name	Approved Date	PO Amt
P143203	V08779	HYTECH247 LLC	4/18/2022	\$ 24,100.00
Vendor Total				\$ 24,100.00

Only national distributor of ENTOUCH Controls & their products (thermostat controls).

Purchase Amounts Requiring a Point-of-Information

Purchases greater than \$20,000 and less than \$50,000 should be reported to the Board of Education on a quarterly basis as a Point-of-Information (POI).

Construction Projects with an estimated cost greater than \$50,000 and less than \$100,000 should be reported to the Board of Education on a quarterly basis as a Point-of-Information (POI).

For reporting purposes, purchases greater than \$20,000 and less than \$100,000 are consolidated.

Local Purchases greater than \$20,000

Facility	Inv. Date	Vendor Name	Description	Invoice Amt.
30	6/13/2022	COLLEGE BOARD	AP EXAMS	\$ 38,720
31	4/19/2022	JOYE DARWIN DBA LEISURE TIME	balance Zoo Atlanta	\$ 31,199
14	4/1/2022	JOYE DARWIN DBA LEISURE TIME	Inv 12935	\$ 30,416
30	6/13/2022	TRACK & EVENTS LLC	Grad Stage, Sounds, Chairs	\$ 21,000

Paulding County School District
Quarterly Financial Report

2022

District Purchase Orders greater than \$20,000

PO #	PEID	Vendor Name	Approved Date	PO Amt	Procurement:
P135481	V01188	MANSFIELD OIL COMPANY	7/23/2021	\$ 575,000	State Contract #99999-001-SPD0000128
P135483	V01188	MANSFIELD OIL COMPANY	7/23/2021	\$ 375,000	State Contract #99999-001-SPD0000128
P141749	V00013	DELL MARKETING LP	2/16/2022	\$ 252,400	State Contract #99999-SPD0000161-0004
P141752	V00013	DELL MARKETING LP	2/16/2022	\$ 227,160	State Contract #99999-SPD0000161-0004
P141751	V00013	DELL MARKETING LP	2/16/2022	\$ 113,580	State Contract #99999-SPD0000161-0004
P141745	V00013	DELL MARKETING LP	2/16/2022	\$ 63,100	State Contract #99999-SPD0000161-0004
P142883	V09432	CLIFF'S FIRE EXTINGUISHER	3/31/2022	\$ 26,708	Douglas County Schools RFP 18-045
P143019	V00453	R K REDDING CONSTRUCTION	4/13/2022	\$ 490,830	RFP 21-210122 (Dobbins)
P143020	V09708	PARRISH CONSTRUCTION GROUP INC.	4/13/2022	\$ 351,876	RFP 21-210122 (Allgood)
P143021	V00453	R K REDDING CONSTRUCTION	4/13/2022	\$ 101,496	RFQC 20-191213 (HHS)
P143187	V00013	DELL MARKETING LP	4/18/2022	\$ 180,044	State Contract #99999-SPD0000161-0004
P143203	V08779	HYTECH247 LLC	4/18/2022	\$ 24,100	Sole Source
P143233	V09611	PC SOLUTIONS & INTEGRATION	4/19/2022	\$ 182,928	IFB-22-220131
P143302	V00482	SARGENT-WELCH LLC	4/21/2022	\$ 23,350	Exempt Purchase - Academic Prerogative
P143321	V00762	APPLE COMPUTER INC	4/25/2022	\$ 23,783	State contract #99999-SPD-T20190904-0001
P143386	V09929	BRIGHTVIEW LANDSCAPE SERVICES INC.	4/27/2022	\$ 203,517	RFP 22-211203
P143382	V03359	FROG STREET PRESS INC	4/27/2022	\$ 28,050	Exempt Purchase - Academic Prerogative
P143369	V09672	95 PERCENT GROUP INC	4/27/2022	\$ 20,031	Exempt Purchase - Academic Prerogative
P143539	V00013	DELL MARKETING LP	5/4/2022	\$ 29,791	State Contract #99999-SPD0000161-0004
P143584	V09611	PC SOLUTIONS & INTEGRATION	5/5/2022	\$ 277,926	IFB-22-220131
P143558	V08804	THE FLIPPEN GROUP LLC	5/5/2022	\$ 68,700	Exempt Purchase - Academic Prerogative
P143726	V09708	PARRISH CONSTRUCTION GROUP INC.	5/16/2022	\$ 261,823	RFP 21-210122 (Allgood)
P143733	V08922	OPEN UP RESOURCES	5/17/2022	\$ 27,425	Exempt Purchase - Academic Prerogative
P143730	V01866	ZANER BLOSER INC	5/17/2022	\$ 24,891	Exempt Purchase - Academic Prerogative
P143770	V00453	R K REDDING CONSTRUCTION	5/18/2022	\$ 301,507	RFP 21-210122 (Dobbins)
P143802	V07022	SHI INTERNATIONAL CORP	5/23/2022	\$ 355,654	State contract #99999-SPD-T20190904-0001
P143801	V07022	SHI INTERNATIONAL CORP	5/23/2022	\$ 334,640	State contract #99999-SPD-T20190904-0001
P143803	V07022	SHI INTERNATIONAL CORP	5/23/2022	\$ 334,640	State contract #99999-SPD-T20190904-0001
P143804	V07022	SHI INTERNATIONAL CORP	5/23/2022	\$ 334,640	State contract #99999-SPD-T20190904-0001
P143805	V07022	SHI INTERNATIONAL CORP	5/23/2022	\$ 334,640	State contract #99999-SPD-T20190904-0001
P143806	V07022	SHI INTERNATIONAL CORP	5/23/2022	\$ 334,640	State contract #99999-SPD-T20190904-0001
P143938	V10021	SATELLITE SHELTERS INC.	5/26/2022	\$ 467,832	Emergency Purchase
P143894	V07072	BREAUX & ASSOCIATES LLC	5/30/2022	\$ 87,650	Exempt Purchase - Professional Service
P143893	V07072	BREAUX & ASSOCIATES LLC	5/30/2022	\$ 27,744	Exempt Purchase - Professional Service
P143925	V02729	WILSON LANGUAGE TRAINING	6/1/2022	\$ 94,500	Exempt Purchase - Academic Prerogative
P144002	V08922	OPEN UP RESOURCES	6/9/2022	\$ 35,595	Exempt Purchase - Academic Prerogative
P144038	V00453	R K REDDING CONSTRUCTION	6/22/2022	\$1,160,010	RFP 21-210122 (Dobbins)
P144034	V00453	R K REDDING CONSTRUCTION	6/22/2022	\$ 245,258	RFQC 20-191213 (HHS)
P144042	V07072	BREAUX & ASSOCIATES LLC	6/22/2022	\$ 95,381	Exempt Purchase - Professional Service
P144769	V00453	R K REDDING CONSTRUCTION	7/20/2022	\$ 860,299	RFQC 20-191213 (HHS)
P144780	V00453	R K REDDING CONSTRUCTION	7/27/2022	\$1,847,872	RFP 21-210122 (Dobbins)
P144779	V09708	PARRISH CONSTRUCTION GROUP INC.	7/27/2022	\$1,140,165	RFP 21-210122 (Allgood)
P144778	V09708	PARRISH CONSTRUCTION GROUP INC.	7/27/2022	\$ 486,327	RFP 21-210122 (Allgood)
P144770	V07072	BREAUX & ASSOCIATES LLC	7/27/2022	\$ 21,399	Exempt Purchase - Professional Service

Construction Related Contracts

SPLOST V				
Project Name	Solicitation ID	Procurement Method	Working Budget	YTD Actuals
STEM Lab Classroom Conversion		Various, Subject to Board Policy DJEDb	37,996	37,996
STEM Lab Classroom Conversion		Various, Subject to Board Policy DJEDb	37,997	37,997
New Middle School Preliminary Testing/Field Work		Various, Subject to Board Policy DJED ^b	10,248	4,328
Miscellaneous, Maintenance & Technology		Various, Subject to Board Policy DJED ^b	4,157,625	4,157,625
Total			\$ 4,243,866	\$ 4,237,946

SPLOST VI				
Project Name	Solicitation ID	Procurement	Working Budget	YTD Actuals
			-	18,211
			-	18,011
Miscellaneous - Athletics Purchases		Various, Subject to Board Policy DJED ^b	25,831	25,831
Miscellaneous - Athletics Purchases		Various, Subject to Board Policy DJED ^b	74,413	74,413
Miscellaneous and SPLOST Audit (\$6k)		RFP 21-200720	5,040,825	48,466
Total			\$ 5,141,069	\$ 184,932

SPLOST VI Bond				
Project Name	Solicitation ID	Procurement Method	Working Budget	YTD Actuals
Hiram HS Renovation	RFQC 20-191213	CMAR (Construction ^a / Architectural Contracts)	4,316,822	2,477,693
Russom Elementary Addition	RFQC 20-191213	CMAR (Construction ^a / Architectural Contracts)	23,455	13,296
Moses Addition	RFQC 20-191213	CMAR (Construction ^a / Architectural Contracts)	90,586	79,791
Allgood Addition	RFP 21-210122	CMAR (Construction ^a / Architectural Contracts)	2,583,444	981,195
Dobbins Addition	RFP 21-210122	CMAR (Construction ^a / Architectural Contracts)	3,731,518	2,366,436
New Middle School	RFP 22-210727	CMAR (Construction ^a / Architectural Contracts)	42,112	263,839
Miscellaneous, Maintenance & Technology		Various, Subject to Board Policy DJED ^b	3,299,116	67,410
Total			\$ 14,087,054	\$ 6,249,660

Fund 300				
Project Name	Solicitation ID	Procurement	Working Budget	YTD Actuals
High School Athletics Purchases		Various, Subject to Board Policy DJED ^b	74,572	41,907
Miscellaneous Projects		Various, Subject to Board Policy DJED ^b	275,428	89,895
Total			\$ 350,000	\$ 131,802

^a Construction contract also approved by BOE

^b Various, Subject to Board Policy DJED includes miscellaneous smaller projects which may or may not have required formal solicitation.

ITB 20-200316: Invitation to Bid for Asphalt Paving, Patching and Resurfacing. Recommended to Board of Education on May 12, 2020. The current contract term is through May 2022.

RFP 21-200720: SPLOST Examination and Review was solicited by the Procurement Department on July 20, 2020 in accordance with O.C.G.A. 20-2-491 performance audit on capital outlay projects funded by sales tax. The solicitation went before the Board as a Point of Information on September 8th, 2020.

RFQC 20-191213: Construction Management Services (at-risk) for anticipated addition, renovation and/or modification projects at Moses MS, Russom ES and Hiram HS. Recommendation was approved by the BOE on February 11, 2020. Construction contracts will be independently approved by the BOE.

RFP 21-210122: Construction Management Services (at-risk) for anticipated addition, renovation and/or modification projects at Dobbins MS and Allgood ES. Recommendation was approved by the BOE on May 11, 2021. Construction contracts will be independently approved by the BOE.

RFP 22-210727: Construction Management Services (at-risk) for anticipated construction of the Seven Hills Middle School Project and the addition, renovation and/or modification projects at McClure MS. Recommendation was approved by the BOE on October 26, 2021. Construction contracts will be independently approved by the

SWC 99999-SPD-SPD0000161-0004: State contract for End-User computing including desktops, laptops, tablets, ruggedized, thin clients, PC peripherals and accessories, and related services and equipment. Effective as of 06/03/2019.

Buy Board Contract #583-19: Purchasing consortium that allows purchases from the following vendors: Electro-Mech Scoreboard, ProMaxima Manufacturing, and Component Fabricators DBA Legend Fitness. Allowed items are for Athletic, Physical Education, Gymnasium Supplies and Equipment and Heavy Duty Exercise Equipment and Related Accessories

Budget Adjustments over \$100,000 Point-of-Information

Board Policy DB: Planning, Programming, Budgeting System

The following FY2022 budget adjustments have a net expenditure impact of \$100,000 or greater and are reported by date, batch ID, adjustment description and totals by function.

The Superintendent is authorized by the Board to approve cumulative adjustments of less than ten (10) percent of the amount originally appropriated for expenditures in any fund type. The Superintendent will report to the Board, on a quarterly basis, all expenditures with budget adjustments in excess of \$100,000.

Budget Adjustments over \$100,000

FY2022 - July 2021 through September 2021

07/01/21	BU004026	Description: To Correct Transfers between SPLOST V and SPLOST VI	1000	2100	2210	2213	2220	2230	2300	2400	2500	2600	2700	2800	2900	3100	3330	4000	5000	Net Total
\$	-	-	-	-	-	-	-	-	-	-	-	-	-	-	-	-	-	-	1,000,000	\$1,000,000

07/01/21	BU004029	Description: Legal Fees not included in Original Budget	1000	2100	2210	2213	2220	2230	2300	2400	2500	2600	2700	2800	2900	3100	3330	4000	5000	Net Total
\$	-	100,000	-	-	-	-	-	-	-	-	-	-	-	-	-	-	-	-	-	\$ 100,000

07/01/21	BU004215	Description: Summer Program	1000	2100	2210	2213	2220	2230	2300	2400	2500	2600	2700	2800	2900	3100	3330	4000	5000	Net Total
\$	-	-	-	370,688	-	1,917	248	-	-	-	-	-	-	5,595	-	-	-	-	-	\$ 378,448

07/22/21	BU004274	Description: Summer Program	1000	2100	2210	2213	2220	2230	2300	2400	2500	2600	2700	2800	2900	3100	3330	4000	5000	Net Total
\$	9,899	18,100	11,314	64,537	-	2,695	3,149	3,000	-	-	-	-	-	-	-	-	-	-	-	\$ 112,694

08/10/21	BU004507	Description: Construction Projects	1000	2100	2210	2213	2220	2230	2300	2400	2500	2600	2700	2800	2900	3100	3330	4000	5000	Net Total
\$	-	-	-	-	-	-	-	-	-	-	-	-	-	-	-	-	-	379,510	-	\$ 379,510

08/12/21	BU004569	Description: Approved Grant Budget	1000	2100	2210	2213	2220	2230	2300	2400	2500	2600	2700	2800	2900	3100	3330	4000	5000	Net Total
\$	(246,541)	-	-	(54,450)	-	3,500	8,339	-	-	-	-	-	-	-	-	-	-	-	-	\$ (289,152)

07/01/21	BU004720	Description: Carryover Grant Funds	1000	2100	2210	2213	2220	2230	2300	2400	2500	2600	2700	2800	2900	3100	3330	4000	5000	Net Total
\$	(1,668)	16,168	-	(1,255)	-	14,733	2,946	-	-	-	-	-	128,351	-	-	-	-	-	-	\$ 159,275

FY2022 - October 2021 through December 2021

10/05/21	BU004801	Description: Current Budget Reduced by FY21 Accrued Unemployment Claims	1000	2100	2210	2213	2220	2230	2300	2400	2500	2600	2700	2800	2900	3100	3330	4000	5000	Net Total
\$	(368,018)	-	-	-	-	4,000	-	-	-	-	-	-	935	-	-	107	-	-	-	\$ (362,976)

11/03/21	BU004897	Description: Title I Approved Budget	1000	2100	2210	2213	2220	2230	2300	2400	2500	2600	2700	2800	2900	3100	3330	4000	5000	Net Total
\$	231,069	12,358	3,531	51,496	-	19,485	1,820	1,000	-	-	-	-	33,402	-	-	-	-	-	-	\$ 354,161

11/04/21	BU004900	Description: VIB Approved Budget	1000	2100	2210	2213	2220	2230	2300	2400	2500	2600	2700	2800	2900	3100	3330	4000	5000	Net Total
\$	103,903	(130,689)	4,628	41,925	-	-	36,621	-	-	-	-	-	61,669	-	-	-	-	-	-	\$ 118,056

11/11/21	BU004919	Description: L4GA Grant Approved by the Board	1000	2100	2210	2213	2220	2230	2300	2400	2500	2600	2700	2800	2900	3100	3330	4000	5000	Net Total
\$	126,500	-	-	138,050	-	-	6,029	11,000	-	-	-	-	27,500	-	-	-	-	-	-	\$ 309,079

11/16/21	BU004930	Description: ARP IDEA Grant Approved by the Board	1000	2100	2210	2213	2220	2230	2300	2400	2500	2600	2700	2800	2900	3100	3330	4000	5000	Net Total
\$	1,028,968	48,190	22,224	213,215	-	-	26,697	-	-	-	-	-	2,500	-	-	-	-	-	-	\$ 1,341,794

12/20/21	BU005030	Description: ARP ESSER III Grant Approved by the Board	1000	2100	2210	2213	2220	2230	2300	2400	2500	2600	2700	2800	2900	3100	3330	4000	5000	Net Total
\$	1,932,393	-	-	1,488,667	-	115,896	438,190	-	-	-	-	214,207	495,000	-	-	-	-	-	-	\$ 4,684,353

Paulding County School District Quarterly Financial Report

2022

FY2022 - January 2022 through March 2022

03/15/22 BU005279 Description: Emergency Connectivity Fund Grant Approved by the Board																	
1000	2100	2210	2213	2220	2230	2300	2400	2500	2600	2700	2800	2900	3100	3330	4000	5000	Net Total
\$ 832,800	-	-	-	-	-	-	-	-	-	-	-	-	-	-	-	-	\$ 832,800
03/24/22 BU005312 Description: Construction Projects																	
1000	2100	2210	2213	2220	2230	2300	2400	2500	2600	2700	2800	2900	3100	3330	4000	5000	Net Total
\$ -	-	-	-	-	-	-	-	-	-	-	-	-	-	-	126,136	-	\$ 126,136

FY2022 - April 2022 through June 2022

04/13/22 BU005372 Description: Amendment based on Revenue Received from ACE Claims																	
<u>1000</u>	<u>2100</u>	<u>2210</u>	<u>2213</u>	<u>2220</u>	<u>2230</u>	<u>2300</u>	<u>2400</u>	<u>2500</u>	<u>2600</u>	<u>2700</u>	<u>2800</u>	<u>2900</u>	<u>3100</u>	<u>3330</u>	<u>4000</u>	<u>5000</u>	<u>Net Total</u>
\$ 207	102,000	-	9,000	-	-	-	(207)	-	-	-	-	-	-	-	-	-	\$ 111,000
04/21/22 BU005421 Description: Special Education Grant Carryover																	
<u>1000</u>	<u>2100</u>	<u>2210</u>	<u>2213</u>	<u>2220</u>	<u>2230</u>	<u>2300</u>	<u>2400</u>	<u>2500</u>	<u>2600</u>	<u>2700</u>	<u>2800</u>	<u>2900</u>	<u>3100</u>	<u>3330</u>	<u>4000</u>	<u>5000</u>	<u>Net Total</u>
\$ 323,564	763,876	-	23,424	-	-	30,447	-	-	-	389,013	-	-	-	-	-	-	\$ 1,530,323
04/26/22 BU005439 Description: Title II Carryover																	
<u>1000</u>	<u>2100</u>	<u>2210</u>	<u>2213</u>	<u>2220</u>	<u>2230</u>	<u>2300</u>	<u>2400</u>	<u>2500</u>	<u>2600</u>	<u>2700</u>	<u>2800</u>	<u>2900</u>	<u>3100</u>	<u>3330</u>	<u>4000</u>	<u>5000</u>	<u>Net Total</u>
\$ -	-	-	234,568	-	(184)	4,758	-	-	-	-	-	-	-	-	-	-	\$ 239,142
04/29/22 BU005457 Description: Readiness in Literacy Grant Approved by the Board																	
<u>1000</u>	<u>2100</u>	<u>2210</u>	<u>2213</u>	<u>2220</u>	<u>2230</u>	<u>2300</u>	<u>2400</u>	<u>2500</u>	<u>2600</u>	<u>2700</u>	<u>2800</u>	<u>2900</u>	<u>3100</u>	<u>3330</u>	<u>4000</u>	<u>5000</u>	<u>Net Total</u>
\$ 158,175	-	-	69,820	-	-	-	-	-	-	-	-	-	-	-	-	-	\$ 227,995
05/03/22 BU005474 Description: Title I Carryover																	
<u>1000</u>	<u>2100</u>	<u>2210</u>	<u>2213</u>	<u>2220</u>	<u>2230</u>	<u>2300</u>	<u>2400</u>	<u>2500</u>	<u>2600</u>	<u>2700</u>	<u>2800</u>	<u>2900</u>	<u>3100</u>	<u>3330</u>	<u>4000</u>	<u>5000</u>	<u>Net Total</u>
\$ 70,528	9,415	5,029	45,429	-	14,479	18,545	1,299	-	-	47,492	-	-	-	-	-	-	\$ 212,216
06/02/22 BU005602 Description: FY20 Warehouse Storage Grant																	
<u>1000</u>	<u>2100</u>	<u>2210</u>	<u>2213</u>	<u>2220</u>	<u>2230</u>	<u>2300</u>	<u>2400</u>	<u>2500</u>	<u>2600</u>	<u>2700</u>	<u>2800</u>	<u>2900</u>	<u>3100</u>	<u>3330</u>	<u>4000</u>	<u>5000</u>	<u>Net Total</u>
\$ -	-	-	-	-	-	-	-	-	-	-	-	-	486,989	-	-	-	\$ 486,989
06/30/22 BU005768 Description: FY22 Alternative Fuel Grant Approved by the Board																	
<u>1000</u>	<u>2100</u>	<u>2210</u>	<u>2213</u>	<u>2220</u>	<u>2230</u>	<u>2300</u>	<u>2400</u>	<u>2500</u>	<u>2600</u>	<u>2700</u>	<u>2800</u>	<u>2900</u>	<u>3100</u>	<u>3330</u>	<u>4000</u>	<u>5000</u>	<u>Net Total</u>
\$ -	-	-	-	-	-	-	-	-	-	192,000	-	-	-	-	-	-	\$ 192,000
06/30/22 BU005814 Description: On-Behalf Payments																	
<u>1000</u>	<u>2100</u>	<u>2210</u>	<u>2213</u>	<u>2220</u>	<u>2230</u>	<u>2300</u>	<u>2400</u>	<u>2500</u>	<u>2600</u>	<u>2700</u>	<u>2800</u>	<u>2900</u>	<u>3100</u>	<u>3330</u>	<u>4000</u>	<u>5000</u>	<u>Net Total</u>
\$ -	-	-	-	-	-	2,084	-	11,208	127,764	210,367	42,121	-	118,705	-	-	-	\$ 512,250

* Report subtotaled by function to include all fund, function or object adjustments having a net expenditure budget impact >= \$100,000.

Grants and Donations Points-of-Information

Board Policy DFK: Grants and Donations

Grants and Donations of less than \$50,000 can be approved by the Superintendent or designee and may, at their discretion, be reported to the Board as a point of information.

- On May 18, 2022, the Paulding County Farm Bureau, Inc. donated \$500 for the purchase of materials for use during the Sizzling Summer STEM professional learning session in June for PCSD educators. Paulding County School District would like to thank the Paulding County Farm Bureau, Inc. the generous donation.
- On May 20, 2022, the North Paulding Touchdown Club donated \$18,688 for the purchase of new weightlifting equipment for the fieldhouse at North Paulding High School. Paulding County School District would like to thank the North Paulding Touchdown Club the generous donation.
- On May 20, 2022, the North Paulding Touchdown Club donated \$4,089.86 for the purchase of new Tsunami Boards for the fieldhouse at North Paulding High School. Paulding County School District would like to thank the North Paulding Touchdown Club the generous donation.

Appendix

General Fund Footnotes

Footnotes

¹ As adopted by the BOE on June 8, 2021

² Includes budget adjustments over \$100,000, an aggregate of -\$0.8 million or 0.3%. See quarterly report POI for more information.

³ Includes budget adjustments less than or equal to \$100,000, an aggregate of \$0.8 million or 0.0%.

Note: Includes Funds 100 & 101 for transactions recorded YTD thru 4/1/2022 as of 6/30/2022

Beginning Fund Balance per projected DE46 reporting

Encumbrance Report

Paulding County School District
Statement of Revenues, Expenditures and Encumbrances
For the Month and Year-to-Date Ended June 2022

General Fund

	<u>Working Budget</u>	<u>Year-To-Date</u>	<u>Percentage of Budget</u>
Revenues	\$ 331,028,063	\$ 334,321,695	101.0%
Expenditures	\$ 315,514,459	\$ 312,204,286	99.0%
Encumbrances/Open PO's		\$ 53,526	

Special Revenue Fund

	<u>Working Budget</u>	<u>Year-To-Date</u>	<u>Percentage of Budget</u>
Revenues	\$ 38,672,784	\$ 20,856,147	53.9%
Expenditures	\$ 38,386,847	\$ 30,876,719	80.4%
Encumbrances/Open PO's		\$ -	

Capital Projects Fund

	<u>Working Budget</u>	<u>Year-To-Date</u>	<u>Percentage of Budget</u>
Revenues	\$ 21,572,847	\$ 28,885,191	133.9%
Expenditures	\$ 13,303,643	\$ 6,674,914	50.2%
Encumbrances/Open PO's		\$ -	

Debt Service Fund

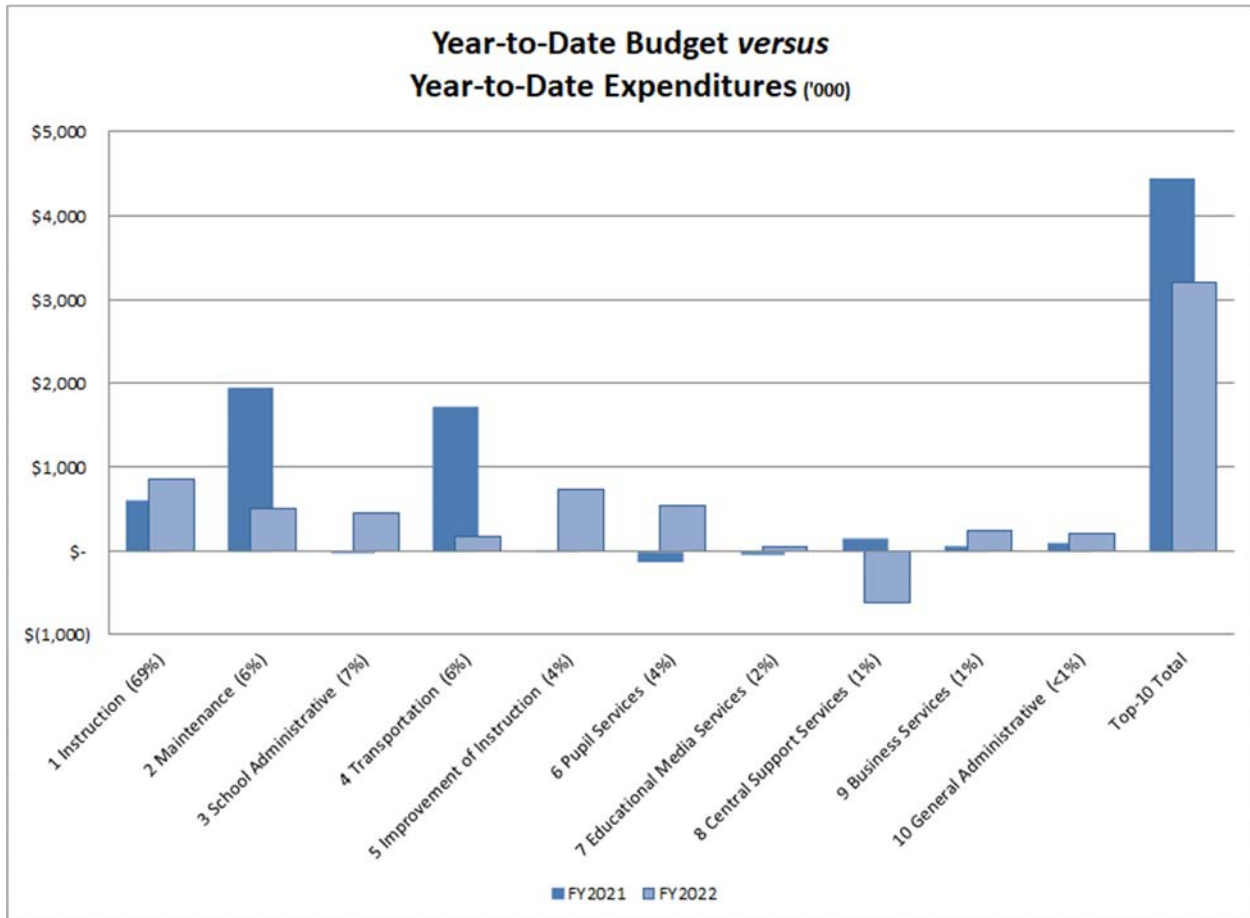
	<u>Working Budget</u>	<u>Year-To-Date</u>	<u>Percentage of Budget</u>
Revenues	\$ 5,000	\$ 205	4.1%
Expenditures	\$ 9,523,347	\$ 9,525,653	100.0%
Encumbrances/Open PO's		\$ -	

School Nutrition Fund

	<u>Working Budget</u>	<u>Year-To-Date</u>	<u>Percentage of Budget</u>
Revenues	\$ 15,908,641	\$ 24,410,667	153.4%
Expenditures	\$ 16,853,557	\$ 17,307,443	102.7%
Encumbrances/Open PO's		\$ -	

General Fund Year Elapsed versus Year-to-Date Expenditures

This report compares the year-to-date budget against year-to-date expenditures (budgeted), for the current and prior fiscal year. Organized by the top 10 functions and grand total, it is designed to detect material financial inconsistencies against budget and the prior year. One month equals 8.3% of the budget year.



Glossary

This glossary contains definitions of terms necessary for a common understanding of the *Quarterly Financial Report*. Some of these definitions are not primarily financial accounting terms have been included due to their significance to the accounting and budgeting process. The glossary is arranged alphabetically with appropriate cross-referencing where necessary.

AD VALOREM TAXES

Taxes levied on the assessed valuation (less exemptions) of real and personal property, including automobiles.

APPROPRIATION

An authorization granted by a legislative body to make expenditures and to incur obligations for specific purposes. An appropriation is usually limited in amount and as to the time when it may be expended.

BALANCE SHEET

A summarized statement, as of a given date, of the financial position of a local education agency per fund and/or all funds combined showing assets, liabilities, reserves, and fund balance.

BOARD OF EDUCATION (DISTRICT)

The elected or appointed body which has been created according to State law and vested with responsibilities for educational activities in a given geographical area. These bodies are sometimes called school boards, governing boards, boards of directors, school committees, school trustees, etc. This definition relates to the general term and covers State boards, intermediate administrative unit boards, and local basic administrative unit boards.

BOND

A written promise, generally under seal to pay a specified sum of money, called the face value, at a fixed time in the future, called the maturity date, and carrying interest at a fixed rate, usually payable periodically. The difference between a note and a bond is that the latter usually runs for a longer period of time and requires greater legal formality.

BONDED DEBT

The part of the school district debt which is covered by outstanding bonds of the district. This type of debt is sometimes called "Funded Debt".

BONDS ISSUED

Bonds sold to a holder, to whom the issuer is indebted.

BUDGET

A budget is a plan of financing operation embodying an estimate of proposed expenditures for a given period or purpose and the proposed means of financing them. The budget usually consists of three

parts. The first part contains a message from the budget-making authority together with a summary of the proposed expenditures and the means of financing them. The second part is composed of drafts of the appropriation, revenue, and borrowing measures necessary to put the budget into effect. The third part consists of schedules supporting the summary. These schedules show in detail the proposed expenditures and means of financing them together with information as to past years' actual revenues and expenditures and other data used in making the estimates.

BUDGET ADJUSTMENT (AMMENDMENT)

An administrative procedure used to revise a budgeted amount after the Annual Budget has been adopted by the Board of Education and approved by the State Board of Education.

BUDGETARY CONTROL

Budgetary Control refers to the management of the business affairs of the school district in accordance with an approved budget. Budget managers have a responsibility to keep expenditures within the authorized amounts.

CAPIAL ASSET

Capital Assets are items owned by the Paulding County School District such as land, buildings, equipment, and other that are used over a period of time to provide service to the organization and the organization community. Capital assets may be used to produce goods or to repair, maintain, or construct other assets.

CAPITAL BUDGET

The capital budget is a plan of proposed capital outlays and the means of financing them for the current fiscal period. It is usually a part of the current budget. If a Capital Program is in operation, it will be the first year thereof. A Capital Program is sometimes referred to as a Capital Budget.

CAPITALIZATION

A process of defining the value or threshold used to determine whether an item will need to be recorded as expenditure or kept as a fixed asset.

CAPITAL OUTLAYS

Expenditures which result in the acquisition of or addition to fixed assets.

CAPITAL PROJECTS

Capital Projects are those that result in the acquisition or construction of land, buildings and related improvements.

CAREER & TECHNICAL EDUCATION (CTAE)

Career & Technical Education programs provide students opportunities to apply mathematics, science, and communication competencies in laboratory and occupational settings that develop specific technical skills applicable in broad concentration areas.

CHART OF ACCOUNTS

A list of accounts systematically arranged, applicable to a specific concern, giving account names and numbers, if any. A chart of accounts, accompanied by descriptions of their use and of the general operation of the books of accounts, becomes a classification or manual of accounts: a leading feature of a system of accounts.

CONTINGENCY

Amount of money set aside for emergency school needs during the year.

CONTRACTED SERVICES

Contracted Services are a type of expenditure that includes labor, material and other costs for services rendered by personnel who are not on the payroll of the local education agency.

DEBT

A debt is an obligation resulting from the borrowing of money or from the purchase of goods and services. Debts of local education agencies include bonds, warrants, and notes, etc.

DEBT LIMIT

The debt limit is the maximum amount of gross or net debt that is legally permitted.

DEBT SERVICE

Interest and principal payments associated with the issuance of bonds.

DIVISION (DEPARTMENT)

A division is a major administrative component of the school system that indicates overall management responsibility for an operation or a group of related operations within a functional area.

EMPLOYEE BENEFITS (FRINGE)

Amount paid by the school system on behalf of employees; these amounts are not included in the gross salary, but are over and above. Such payments are, in a sense, overhead payments. They are fringe benefit payments, and while not paid directly to employees, are part of the cost of salaries and benefits. Examples include: (a) group health or life insurance, (b) contribution to employee retirement, (c) Social Security, and (d) Worker's Compensation.

EXPENDITURES

This includes total charges incurred, whether paid or unpaid, for current expense, capital outlay, and debt service.

FISCAL PERIOD

Any period at the end of which a local education agency determines its financial position and the results of its operations. The period may be a month, a quarter, or a year, depending upon the scope of operations and requirements for managerial control and reporting purposes.

FISCAL YEAR (FY)

A twelve-month period of time to which the annual budget applies and at the end of which a local education agency determines its financial position and their results of its operations. For Paulding County School District this period is July 1 through June 30.

FULL-TIME EQUIVALENT – EMPLOYEE (FTE)

The amount of employed time required in a part-time position expressed in proportion to that required in a full-time position, with 1.0 representing one full-time position. It is derived by dividing the amount of employed time in the part-time position by the amount of employed time required in a corresponding fulltime position.

FULL-TIME EQUIVALENT – STATE FUNDING (FTE)

Local school systems in Georgia must report enrollment at least twice during the school year for funding purposes. This reporting reflects the school day being divided into six parts (periods). The student is counted six times, according to which programs he or she participates in during the day.

Each student is counted for each one-sixth of the school day for the eligible program in which he or she is enrolled. The resulting total, when divided by six, is known as the full-time equivalent (FTE) program count. An average of the counts reported at three different times during the year are used in the funding formula.

See also QUALITY BASIC EDUCATION.

FUNCTION¹

Function is an accounting term relating to both the budget and the financial report. A “function” is a grouping of activities being performed for which salaries and other types of direct costs are expended and accounted. Functions and sub functions consist of activities which have somewhat the same general operational objectives. Furthermore, categories of activities comprising each of these divisions and subdivisions are grouped according to the principle that the activities should be combinable, comparable, relatable and mutually exclusive. Both the budget and the financial reports group activities within “functions”.

INSTRUCTION (1000)

Instruction includes activities dealing directly with the interaction between teachers and students. Teaching may be provided for students in a school classroom, in another location such as a home or hospital, and in other learning situations such as those involving co-curricular activities. It may also be provided through some other approved medium such as television, radio, telephone, and

¹ Georgia DOE Chart of Accounts, 11/1/2018

correspondence. Included here are the activities of aides or classroom assistants of any type (clerks, graders, teaching machines, etc.) which assist in the instructional process. Note: Counselors and Technology Specialists funded through QBE are allowable charges to this function for expenditure control purposes.

PUPIL SERVICES (2100)

Activities designed to assess and improve the well-being of students and to supplement the teaching process. Activities include guidance, counseling, testing, attendance, social work, health services, etc. Also include supplemental payments for additional duties such as coaching or supervising extracurricular activities.

IMPROVEMENT OF INSTRUCTIONAL SERVICES (2210)

Technical and logistical support activities designed to aid teachers in developing the curriculum, preparing and using special curriculum materials, and understanding the various techniques that stimulate and motivate students. These services facilitate, sustain, and enhance instruction techniques. Includes costs associated with technology personnel (Technology Specialists), contracted support services, systems planning and analysis, systems application development, network support services, and other technology-related costs that relate to the support of instructional activities. Effective FY 2018 – All Instructional Staff Training (professional development) costs will be reported using Function 2213. Training and professional development for other, non-instructional employees should be reported in their respective functions.

INSTRUCTIONAL STAFF TRAINING (2213)

Activities associated with the professional development and training of instructional personnel. These include such activities as in-service training (including mentor teachers), workshops, conferences, demonstrations, courses for college credit (tuition reimbursement), and other activities related to the ongoing growth and development of instructional personnel. Training that supports the use of technology for instruction should be included in this code. The incremental costs associated with providing substitute teachers in the classroom (while regular teachers attend training) should be captured in this function code. All costs should be charged to this code regardless of whether training services are provided internally or purchased from external vendors. It should be noted that the salary of a teacher who is attending training would still be reported in function 1000.

EDUCATIONAL MEDIA SERVICES (2220)

Activities concerned with directing, managing and operating educational media centers. Included are school libraries, audio-visual services and educational television.

FEDERAL GRANT ADMINISTRATION (2230)

Activities concerned with the demands of Federal Programs grant management. Federal Indirect Cost Charges should continue to be charged to 2300-880.

GENERAL ADMINISTRATION (2300)

Activities concerned with establishing and administering policy for operating the LUA. These include the activities of the members of the Board of Education. Local activities in interpretation of the laws and statutes and general liability situations are charged here, as are the activities of external auditors. Also recorded here are activities performed by the superintendent, administrative support personnel and deputy, associate, or assistant superintendent having overall administrative responsibility.

SCHOOL ADMINISTRATION (2400)

Activities concerned with overall administrative responsibility for school operations. Included are activities of principals, assistant principals, full time department chairpersons and clerical staff.

SUPPORT SERVICES – BUSINESS (2500)

Activities concerned with the fiscal operation of the LUA, including budgeting, financial and property accounting, payroll, inventory control, internal auditing and managing funds. Also included are purchasing, warehouse and distribution operations, and printing, publishing and duplicating operations.

MAINTENANCE AND OPERATION OF PLANT SERVICES (2600)

Activities concerned with keeping the physical plant open, comfortable, and safe for use, and keeping the grounds, buildings, and equipment in effective working condition and state of repair. This includes the activities of maintaining safety in buildings, on the grounds, and in the vicinity of schools. Property insurance expenditures are recorded in this function.

STUDENT TRANSPORTATION SERVICE (2700)

Activities concerned with the conveyance of students to and from school and trips to school activities. These activities include supervision of student transportation, vehicle operation, servicing and maintenance, bus monitoring and traffic direction. Transportation insurance expenditures are charged to this function.

SUPPORT SERVICES – CENTRAL (2800)

Central Office activities other than general administration and business services. Included are personnel services, data processing services, strategic planning including research, development and evaluation on a system-wide basis; and public relations activities, such as writing, editing and other preparation necessary to disseminate information to students, staff and the general public.

OTHER SUPPORT SERVICES (2900)

All other support services not properly classified elsewhere in the 2000 series.

SCHOOL NUTRITION PROGRAM (3100)

Activities concerned with providing food to students and staff in a school or LUA. This service area includes the preparation and serving of regular and incidental meals or snacks in connection with school activities and delivery of food. Activities should be recorded in Fund 600 (School Nutrition Program) except when paid by federal funds from fund 100 on behalf of the food service operation due to a shortage of funds or by special arrangement.

ENTERPRISE OPERATIONS (3200)

Activities that are financed and operated in a manner similar to private business enterprises - where the intent is to recover costs through user charges. Examples: LUA operated bookstore, cannery or freezer plant operation, stadium operation, etc.

COMMUNITY SERVICES OPERATIONS (3300)

Activities concerned with providing community services to students, staff or other community participants. Examples of this function would be the operation of a community swimming pool, a recreation program for the elderly, a child care center for working mothers, etc.

FACILITIES ACQUISITION AND CONSTRUCTION SERVICES (4000)

Activities concerned with the acquisition of land and buildings; renovating buildings; the construction of buildings and additions to buildings, initial installation or extension of service systems and other build-in equipment; and improvements to sites.

OTHER OUTLAYS (5000)

Outlays which cannot be properly classified as expenditures, but require budgetary or accounting control. Transfers to other funds are recorded as 5000-930.

DEBT SERVICE (5100)

Outlays to retire the long-term debt (obligations in excess of one year) of the LUA. Included are payments of principal, interest and paying agents' fees. Interest on current loans (repayable within one year) is charged to function 2500.

FUND

A fiscal and accounting entity which is comprised of a self-balancing set of accounts that reflect all assets, liabilities, equity, revenue, and expenditures (or expenses) necessary to disclose financial position and the results of operations. Funds are established as individual entities in order to segregate financial records for purposes of legal compliance, different natures of the activities performed, measurement of different objectivities, and to facilitate management control.

FUND BALANCE

Fund Balance refers to the excess of assets of a fund over its liabilities and reserves. During the fiscal year prior to closing, it represents the excess of the fund's assets and estimated revenues for the period over its liabilities, reserves and appropriations for the period.

FUND BALANCE – UNASSIGNED

That portion of the excess funds which has no legal commitments or formal designations by the Board for future funding needs.

FUND, CAPITAL PROJECTS

The Capital Projects Fund is used to account for all resources used for acquiring capital sites, buildings, and equipment as specified by the related bond issue. Capital project funds are designated to account for acquisition or construction of capital outlay assets which are not acquired directly by the general fund, special revenue funds, or enterprise funds. Capital project funds have been developed to account for the proceeds of a specific bond issue and revenue from other possible sources which are designated for capital outlay, i.e., for land, buildings, and equipment.

FUND, DEBT SERVICE

The fund used to finance and account for payment of principal and interest on all long-term general obligation debts. Debt service funds are used to accumulate resources over the outstanding life of the bond issue in an amount equal to the maturity value. Cash of the debt service may be invested in income producing securities which are converted back into cash at the maturity date for use in retiring bonds.

FUND, GENERAL

The fund used to finance the ordinary operations of the education agency. It is available for a legally authorized purpose and consists of money not specifically designated for some other particular purpose.

FUND, SPECIAL REVENUE

A fund used to account for the proceeds of specific revenue sources (other than special assessments, expendable trusts, or for major capital projects) that are legally restricted to expenditures for specific purposes.

FUND, FIDUCIARY

The fund used to account for money and property held in trust by a school system for individuals, government entities, or non-public organizations. A Trust Fund is usually in existence over a longer period of time than an Agency Fund. Primarily, Agency Funds function as a clearing mechanism for cash resources collected by the district held for a short period, and then disbursed to authorized recipients.

GENERALLY ACCEPTED ACCOUNTING PRINCIPALS (GAAP)

A system of uniform minimum standards for financial accounting and recording, encompassing the conventions, rules and procedures that define accepted accounting principles.

GRANT

Contribution of either money or material goods given by a contributing unit (public or private) to another receiving unit and for which the contributing unit expects no repayment. Grants may be for a specific or general purpose.

INTER-FUND TRANSFERS

Amounts transferred from one fund to another fund.

KINDERGARTEN

A group or class that is organized to provide educational experience for children for the year immediately preceding the first grade and conducted during the regular school year.

LOCAL EDUCATION AGENCY (LEA)

As defined by the Elementary and Secondary Education Act, a Local Education Agency is a public board of education or other public authority legally constituted within a State for either administrative control or direction of, or to perform a service function for, public elementary schools or secondary schools in a city, county, township, school district, or other political subdivision of a State, or for a combination of school districts or counties that is recognized in a State as an administrative agency for its public elementary schools or secondary schools.

MAINTENANCE & OPERATIONS (M&O)

Refers to the cost associated with the maintenance and operations of the school district.

MILLAGE RATE

The ad valorem tax rate expressed in terms of the levy per thousand dollars of taxable assessed value established by the governing authority each fiscal year.

A millage rate may be levied for the maintenance and operation of the school district (M&O millage) or to fund debt service (Bond millage).

A mill is equal to \$1 for each \$1000 of taxable property value.

MODIFIED ACCRUAL BASIS

The accrual basis of accounting adapted to the governmental fund-type measurement focus. Under this basis, revenues and other financial resources are recognized when they accrue, that is when they become both “measurable” and “available” to finance expenditures of the current period. Expenditures are recognized when the fund liability is incurred.

OBJECT

An accounting term used to describe the service or commodity obtained as a result of a specific expenditure or to describe a specific revenue source.

ORIGINAL BUDGET

Original budget adopted by the governing body before any budget adjustments.

PAYROLL COSTS

All costs covered under the following objects of expenditures: Certified Salaries, Classified Salaries and Employee Benefits.

PERSONNEL COSTS – FULLY LOADED

Personnel Costs are expenditures for salaries, fringe benefits, etc.

PER PUPIL (ALLOTMENT)

The per pupil allotment is an allotment to each school for material and supplies based on the quantity and characteristics of those pupils.

PER PUPIL (EXPENDITURE)

This refers to expenditures for a given period of time divided by a pupil unit of measure.

POSITION CONTROL

The control or management of a school district's personnel allotments in accordance with an approved budget and with a responsibility to keep expenditures within authorized amounts.

PROGRAM

In budgeting, a program refers an effort to accomplish a specific objective or objectives consistent with funds or resources available. Budgets and actual revenue and expenditure records may be maintained per program.

PROGRAM WEIGHTS

Since different programs vary in their cost to operate, each of the nineteen (19) QBE programs is assigned a different program weight. These weights reflect the cost of teachers, paraprofessionals and other instructional personnel; instructional materials; facility maintenance and operation (M&O) costs; media center personnel and material costs; school and central office administration costs and staff development.

See also QBE.

QUALITY BASIC EDUCATION ALLOTMENTS (QBE)

Funds are allotted by the State on the basis of “Weighted” FTE (Full-time Equivalent students) to the local school system. The following are nineteen (19) programs of allotment under QBE:

1. Kindergarten (EIP)
2. Grades 1 - 3 (EIP)
3. Grades 4 - 5 (EIP)
4. Kindergarten
5. Grades 1 – 3
6. Grades 4 – 5
7. Grades 6 – 8
8. Grades 9 – 12
9. HS Vocational Lab
1. 19. English for Speakers of Other Languages (ESOL)
10. Middle School Program
11. Persons with disabilities: Category I
12. Persons with disabilities: Category II
13. Persons with disabilities: Category III
14. Persons with disabilities: Category IV
15. Persons with disabilities: Category V
16. Intellectually Gifted Students: Cat VI
17. Remedial Education
18. Alternative Education
19. ESOL

QBE – MID-TERM ADJUSTMENT

Because the QBE formula is based on FTE counts which are taken primarily in the previous school year, there will be a need to adjust the total allotment as more recent counts become available. If the more recent counts result in an increase in funds needed, the State Board will request the additional funds from the General Assembly.

REIMBURSEMENT

Cash or other assets received as a repayment of the cost of work or services performed, or of other expenditures made for or on behalf of another governmental unit or department, or for an individual, firm, or corporation.

RESERVE FOR GROWTH (CONTINGENCY)

An amount reserved by the Board to accommodate student growth beyond projections and state compliance situations.

REVENUE

Additions to the assets of a fund that are made available to finance the fund's expenditures during a fiscal period.

ROLLBACK

A rollback is a reduction in the millage tax rate to offset any increased revenue resulting from property re-evaluation.

SALARIES

This includes expenditures for hourly, daily, and monthly salaries including overtime pay and sick pay.

SOURCE OF FUNDS

This dimension identifies the expenditure with the source of revenue, i.e., local, state, federal, and others.

SPECIAL EDUCATION

Consists of direct instructional activities designed to deal mainly with the following pupil exceptionalities: the physically handicapped, the emotionally and/or socially handicapped, the culturally handicapped (including compensatory education), the mentally retarded, and the mentally talented and gifted.

SPECIAL PURPOSE LOCAL OPTION SALES TAX FOR EDUCATION (E-SPLOST)

Authorized by the State of Georgia and then "opted-in" by local governments, a SPLOST is a 1% sales tax voted on and approved by citizenry to be used by that government.

STATE HEALTH BENEFIT PLAN

The cost of employee health insurance is determined on an annual basis by the State Personnel Board.

STEP INCREASE

A scheduled annual increase to an eligible employee's salary based on pay grade and performance reviews. A step increase may be withheld from employees based on poor evaluations. A step increase is distinct from a salary raise which is determined for all employees by the Board.

STUDENT-ACTIVITY FUNDS

Services for public school pupils, such as entertainment, publications, clubs, band, and orchestra, that are managed or operated by the student body under the guidance and direction of an adult and are not part of the regular instructional program.

TAX DIGEST

Is the Paulding County Tax Assessor's summary of the projected taxable value of all commercial, industrial, and residential property in the school district.

TEACHER ALLOTMENT

The teachers are allotted to each school on the basis of active enrollment. The formula used for allocations meet the provisions of the State Board of Education and accrediting standards.

TEACHER RETIREMENT SYSTEM (TRS)

The Georgia Teacher Retirement System is a cost-sharing multiple-employer public employee retirement system. The participation of all teachers and certain other designated employees is mandated by statute. The TRS is funded through a combination of employee, employer, and State contributions.

TITLE AD VALOREM TAX

Vehicles purchased on or after March 1, 2013 and titled in Georgia are exempt from sales and use tax and the annual ad valorem tax. Instead, these vehicles are subject to a one-time title ad valorem tax that is based on the value of the vehicle.

TRAINING AND EXPERIENCE (T&E)

This is a measure representing the combination levels of training and experience held by an employee. This measure is used to augment the base state funding levels.

VOCATIONAL PROGRAM

A program offered for the primary purpose of offering education and training in one or more semi-skilled, skilled, or technical occupations.

WEIGHTED FULL-TIME EQUIVALENT (WFTE)

The result of FTE counts times the State-assigned program weight for each of the nineteen (19) QBE programs.

WORKING BUDGET

An increase or decrease to the original amount as adopted by the governing body.