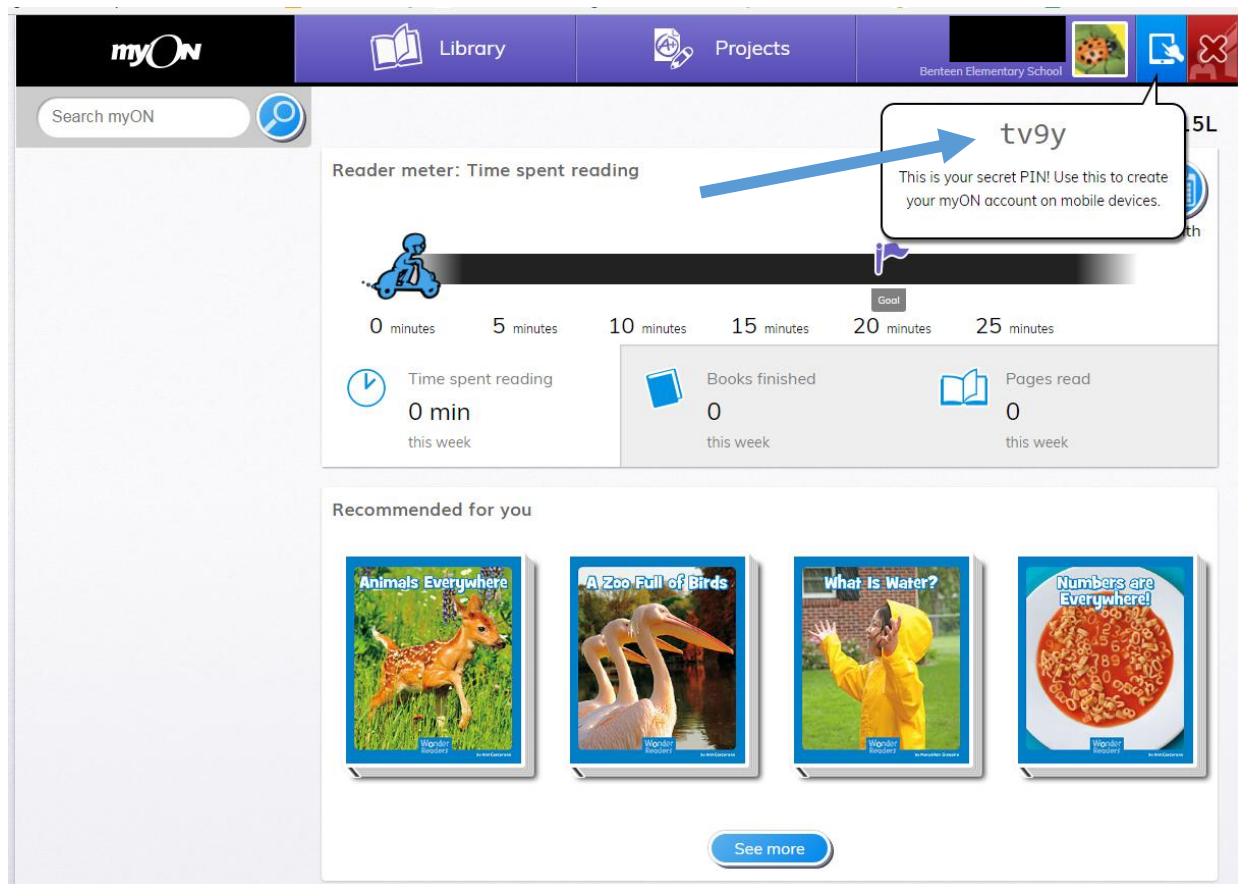
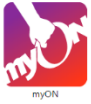


## Linking a user to the myON app – FIRST TIME on a device

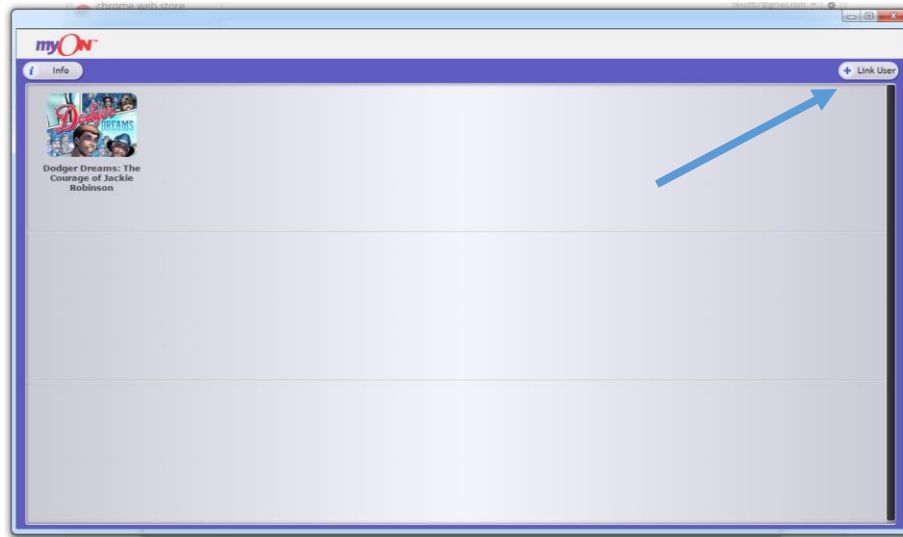
The FIRST TIME you use your myON app, you will need to LINK to the app. To Link to the myON app, follow these steps:

1. Open the new myON app on your device.
2. Choose to “Add User” or “Link User”.
3. Follow the onscreen instructions, and enter your school, username, and PIN\*. \* The four digit PIN can be found in the top right corner of the myON dashboard. App users have to use their PIN as the password when connecting to the app for the FIRST TIME ONLY. Students must take interest inventory and placement FIRST and then their dashboard will appear and they will have access to their PIN.

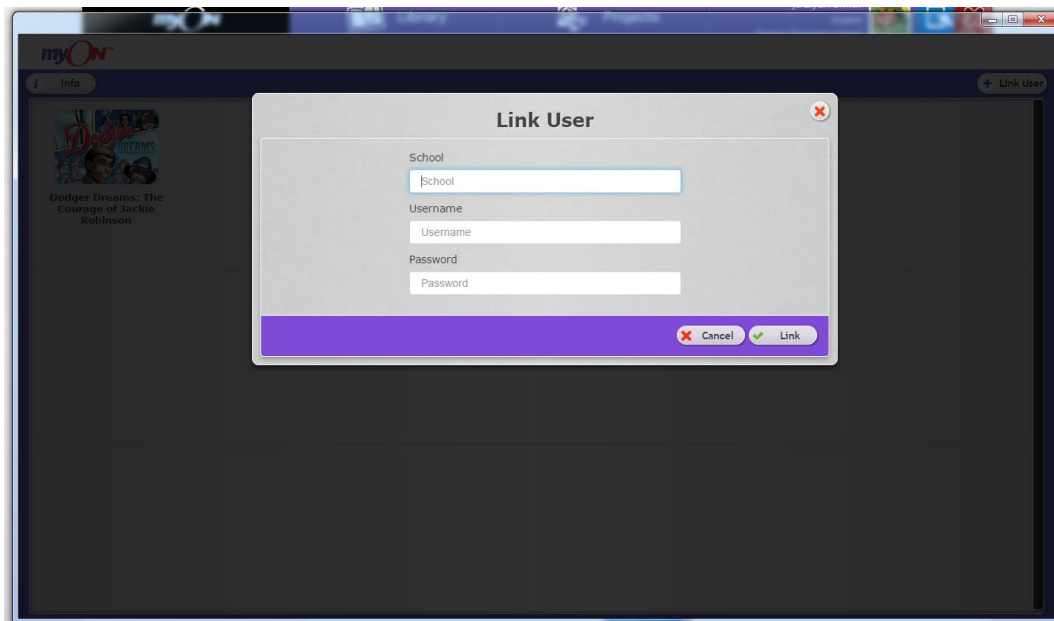




Find the myON app on your device. Click on the app and the Link User Screen will appear. Click on the Link User button.



When you click the Link User button, a screen will appear to enter your User Information:



You will enter YOUR school name, your User ID, and the PIN number that you got when you first logged in.

You will not need to enter your pin again on your mobile device. You will only need your User Name to access the app from this point forward.