

The background is a light purple color. In the top left, there is a blue, textured, star-like shape. A large, solid orange rectangle is positioned in the center. To the right of the orange rectangle is a large, yellow, stylized handprint. A thick, green, curved line is on the left side. In the bottom right corner, there are several small, orange, teardrop-shaped spots.

# CURRICULUM NIGHT

Welcome Parents!

# Welcome Parents



Welcome to a new school year. In this presentation you will learn:

- School Policies
- 4th Grade Curriculum
- Assessments
- Classroom Expectations
- How you can support your child
- Q & A



# MEET THE 4TH GRADE TEACHERS

Mrs. Bridges

Ms. Madison

Mrs. Green

Ms. Lackey

Mrs. McElreath





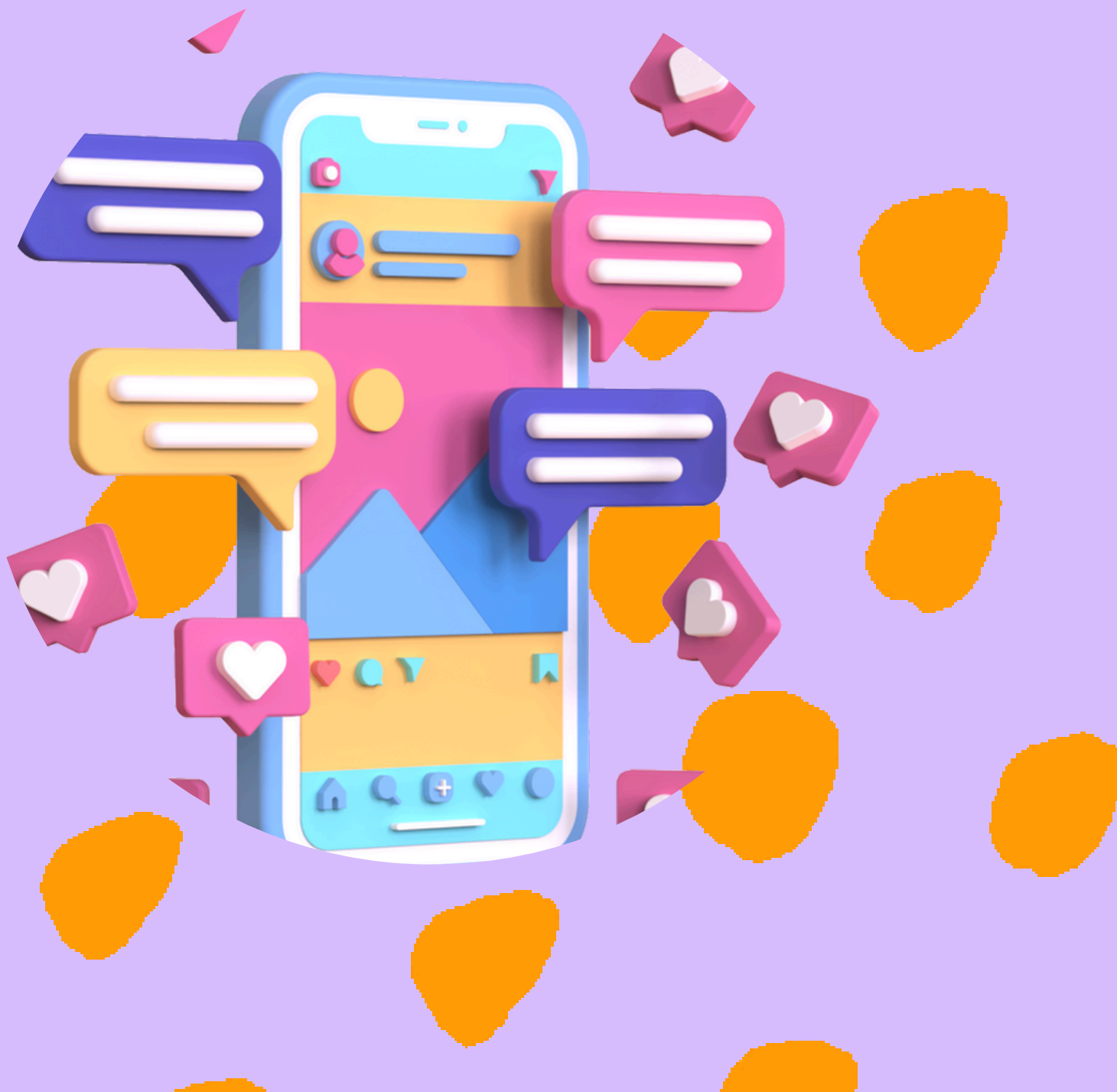
# Communication

☒ClassDojo-All classroom news and information is shared on ClassDojo. This is the best way to contact your child's teacher.

☒Email:

- [sbridges@paulding.k12.ga.us](mailto:sbridges@paulding.k12.ga.us)
- [jmadison@paulding.k12.ga.us](mailto:jmadison@paulding.k12.ga.us)
- [relackey@paulding.k12.ga.us](mailto:relackey@paulding.k12.ga.us)
- [cgreen@Paulding.k12.ga.us](mailto:cgreen@Paulding.k12.ga.us)
- [laurenl.mcelreath37@paulding.k12.ga.us](mailto:laurenl.mcelreath37@paulding.k12.ga.us)

☒Phone –Panter Elem. 770-443-4303





# Attendance Policies

Here are some of the policies to take note of from the school handbook:

**THREE (3) UNEXCUSED ABSENCES: TEACHERS WILL MAKE DIRECT CONTACT WITH PARENTS OF STUDENTS WHEN THEY ACCUMULATE THREE UNEXCUSED ABSENCES. THE ATTENDANCE PROCEDURES AND CONSEQUENCES WILL BE EXPLAINED TO THE PARENT. THIS ACTION WILL BE DOCUMENTED IC.**

**FOUR (4) UNEXCUSED ABSENCES: TEACHERS WILL REFER STUDENTS TO THEIR SCHOOL COUNSELOR UPON FOUR UNEXCUSED ABSENCES. THE PRINCIPAL OR DESIGNEE WILL BE NOTIFIED AS WELL. \*ATTENDANCE FORM WILL BE COMPLETED AND GIVEN TO MR. WHITE.**

**FIVE (5) UNEXCUSED/UNLAWFUL ABSENCES: TEACHERS WILL REFER STUDENTS WITH FIVE UNEXCUSED/UNLAWFUL ABSENCES TO THE PRINCIPAL OR DESIGNEE.**



# OUR CURRICULUM

Here is the curriculum we will cover this year



# SHARED READING & IRA

Approximate Time Guide: Read-aloud and Grammar or Process Writing		
15 Minutes - 30 Minutes	Interactive Read-Aloud Summarizing/Text Structure Instruction	Writer's Workshop
15 Minutes	Sentence Combining Approach to Grammar	
Approximate Time Guide: Shared Reading Instruction		
15 Minutes	Word Study (Spelling and Meaning)	
10 Minutes	Discuss Text Structure (Information) Set a Purpose for Reading Choral Reading Revisit that Purpose Set a New Purpose for Rereading	
10 Minutes	Rereading in Partners Revisit that Purpose	
10 Minutes	Discuss Text Structure (Narrative) Comprehension Discussion Assign Written Response	

# ILLUSTRATIVE MATHEMATICS

Illustrative Mathematics K-5, is a problem-based, rigorous curriculum that makes elementary school mathematics accessible, impactful, and memorable for all students.

The mathematical work for grade 4 is partitioned into 9 units:

Factors and Multiples

Fraction Equivalence and Comparison

Extending Operations to Fractions

From Hundredths to Hundred-thousands

Multiplicative Comparison and Measurement

Multiplying and Dividing Multi-digit Numbers

Angles and Angle Measurement

Properties of Two-Dimensional Shapes

Putting it All Together



# GOAL SETTING

We are excited to watch ALL of our 4th graders  
GROW this year!

Students continue to set Reading and Math Goals  
this year as a way to encourage continued growth.  
Students continually revisit and update their goals  
as needed throughout the year!

# ASSESSMENTS

**ALONG WITH CLASSROOM ASSESSMENTS, YOUR STUDENT WILL BE TAKING THE FOLLOWING ASSESSMENTS THIS YEAR:**

- **BEACON-READING AND MATH**
- **ACADIENCE**
- **WRITE SCORE**
- **GEORGIA MILESTONES**



# DRC BEACON

**DRC BEACON IS AN INTEGRATED SYSTEM OF ASSESSMENT AND LEARNING THAT:**



Offers interim assessments for ELA and math in grades 3-8



Supports formative Instructional practices



Is administered on the user-friendly DRC INSIGHT platform



Provides students with the tools and accommodations they already use



Uses a computer-adaptive algorithm to pinpoint student performance



Generates immediate student results



Provides predicted score ranges on end-of-year assessment



Monitors student learning and progress throughout the year

# Acadience

**All students take benchmark assessments three times during the school year (fall, winter, spring).**

**For benchmark assessments, students read three passages for one minute each. The median score of the three passages are taken.**

**Students will also take the MAZE, a comprehension assessment.**



# HOW ARE THE RESULTS USED?

**Student scores give information about if a student is on track for grade-level reading success.**

**As a school we can identify common areas of need and provide extra help or purchase supplemental materials for specific reading skills.**

**Teachers use results to prepare day-to-day reading lessons and small group instruction**

# STANDARDIZED TESTING

Georgia Milestones  
(Reading, Math, ELA)  
Write Score

# CONFERENCES

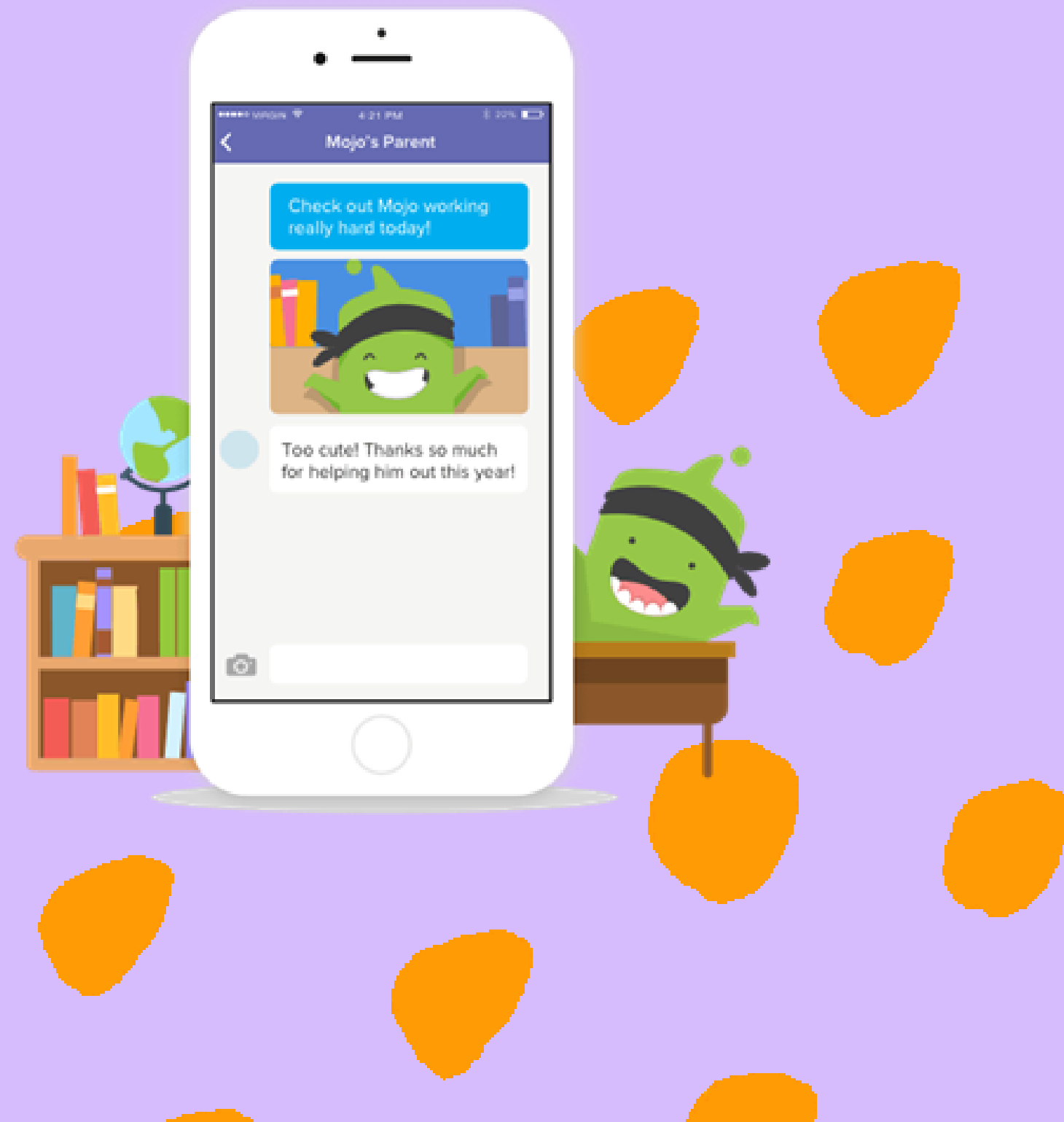
October 7th and 8th

March 10th and 11th

(Students will be released at 12:30 on these days.)



# ClassDojo

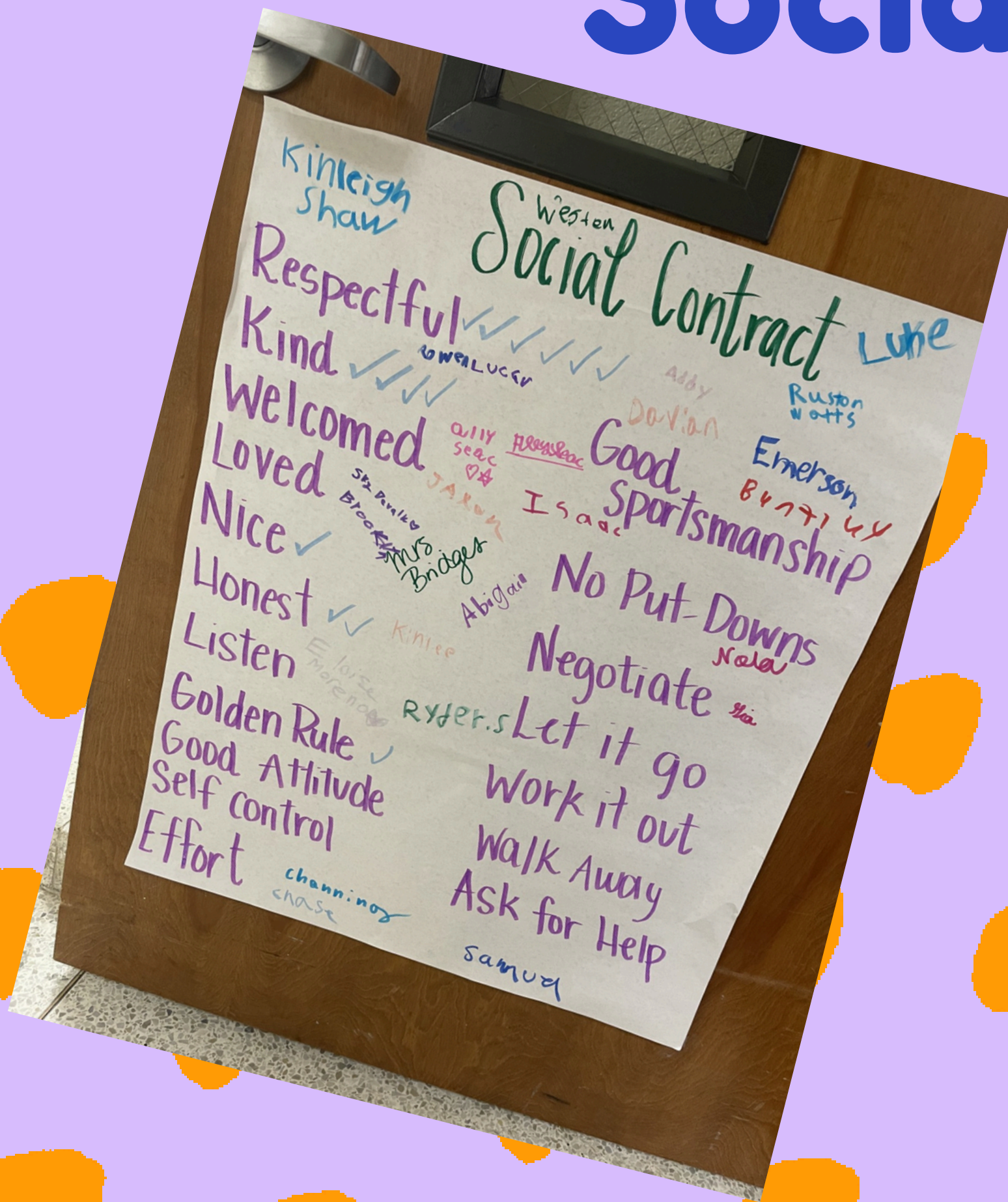


- Online behavior management
- ☒ Encourage students to work hard, stay on task, complete assignments, and participate.
- ☒ Students have a monster avatar that earns or loses points.
- ☒ Parents/Guardians sign up to see how your child is doing at school and to communicate with the teacher by sending instant messages.
- ☒ Students can points for rewards.

# Social Contract

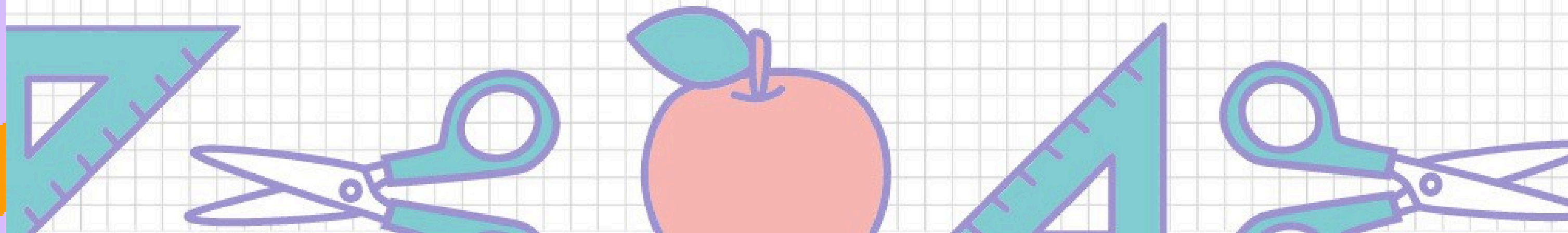
The social contract is built within the first week of school and requires both teacher and student participation to create.

1. How do you want to be treated by the teacher?
2. How do you want to be treated by each other?
3. How do you think the teacher wants to be treated?
4. How do you want to treat each other when a conflict occurs?



# School Lunch

# **APPLICATION**





# Parent Resource Center

What is the Parent Resource Center?

Our goal is to provide parents, grandparents, and guardians with information and resources that support student achievement. We provide support for reading and math skills, homework, study strategies, social skills, and parenting tips. All materials are available for check out. We encourage parents to keep the resources for a few weeks before returning them. The Parent Resource Center also contains free parenting brochures that cover many current issues.

Open Daily: 7:30a.m.-3:00p.m.

The Parent Resource Center is located at the front of the school.

Panter Parent Resource Check Out  
Request Form



# Encourage Reading at Home



- Create a quiet reading area at home.
- Establish a routine for reading (at least 20 minutes each day).
- Talk about books, magazines, etc.
- Have your child read aloud to you.
- Read and ride – Play audiobooks while traveling so your child hears modeled fluent reading and ask questions about the story.





# Q & A

episode