



CollegeBoard

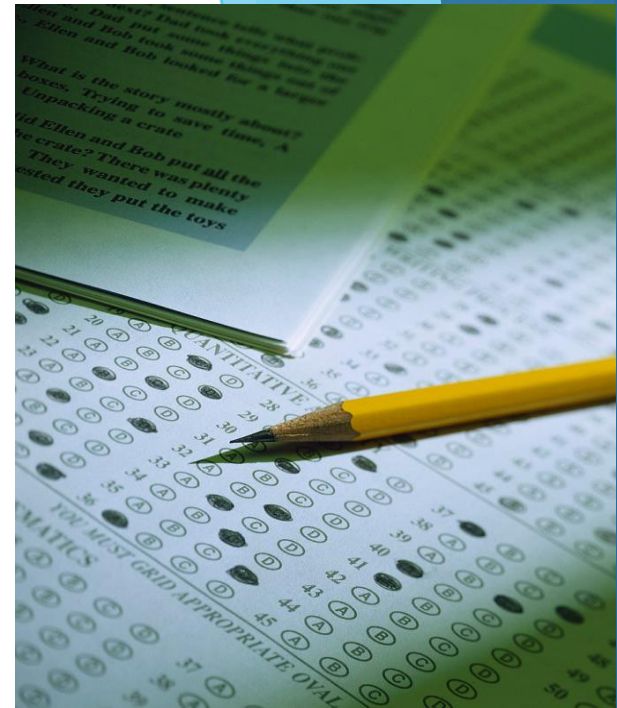
PSAT/NMSQT

10th Grade Advisement

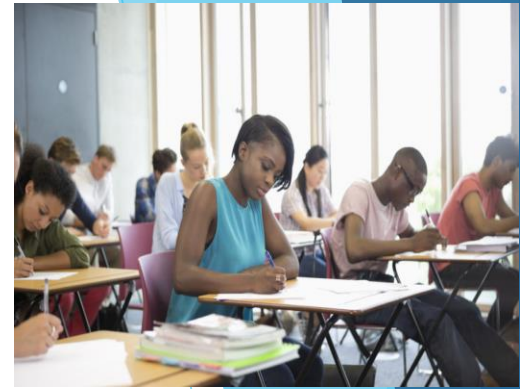
Fall 2017

What is the PSAT?

- ▶ The Preliminary SAT/National Merit Scholarship Qualifying Test (PSAT/NMSQT)
- ▶ Measures critical reading skills
- ▶ Math problem-solving skills
- ▶ Writing skills



Why take the PSAT?



- ▶ The PSAT uses similar questions found on the SAT Reasoning test; therefore, it is good preparation.
- ▶ Predict SAT scores.
- ▶ Receive feedback on skill strengths and weaknesses and individualized assistance via Khan Academy including customized practice.
- ▶ In 11th grade enter competition for scholarships (National Merit Scholarship)

What does the PSAT measure?

- ▶ Math reasoning, critical reading, and writing skills necessary for academic success in college.
- ▶ Knowledge and skills developed through years of study in different courses.
- ▶ Ability to reason with facts and concepts.

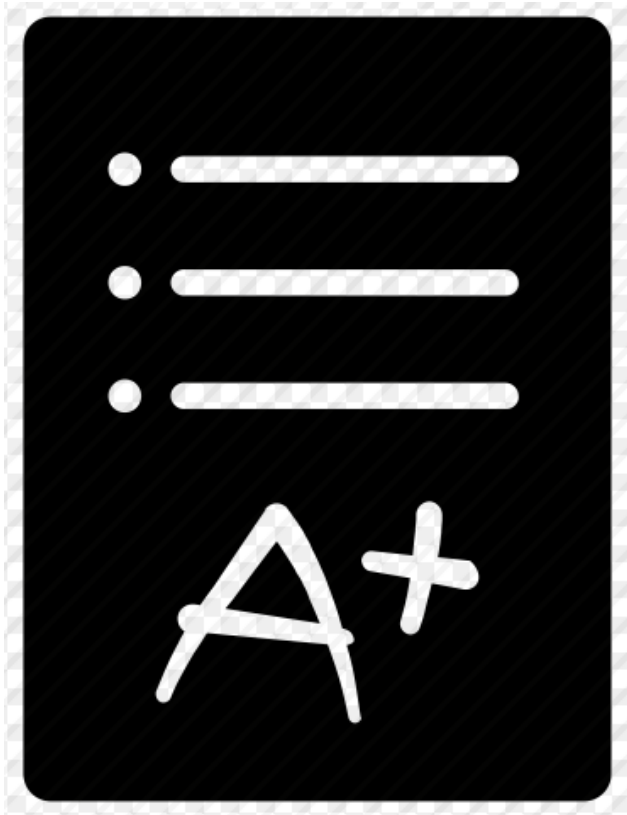


PSAT Scoring



- ▶ Total Scores: 320 - 1520 .
- ▶ Section Scores for Reading/ Writing and Math : 160 - 760.
- ▶ Ranges for Test Scores for Reading, Writing and Language and Math: 8-38.
- ▶ Cross Test Scores for Analysis of History/Social Studies and Analysis of Science: 8-38.
- ▶ Detailed breakdown of skills in sub scores to assist targeting practice.

PSAT Scoring Continued



- ▶ Correct answer equals one point.
- ▶ Omitted question equals zero points.
- ▶ There is no penalty for guessing. Still try to take your best guess, but don't leave unanswered questions.

PSAT Content

- ▶ Reading Section - 60 minutes.
- ▶ Writing and Language Section - 35 minutes.
- ▶ Math section - 70 minutes.

PSAT Reading Section

- ▶ All Reading Test questions are multiple choice and based on passages.
- ▶ Some passages are paired with other passages or informational graphics, such as charts, graphs, and tables.
- ▶ No mathematical computation is required.
- ▶ Prior topic-specific knowledge is never tested.

Reading Section Continued

- ▶ Questions will test students on analysis in history/social studies and analysis in science. Students may need to analyze passages and graphics.
- ▶ Science passages may be paired with questions focused on hypotheses, experimentation, and data.
- ▶ Literature passages may be paired with questions focused on theme, mood, and characterization.
- ▶ Some questions will test how well students understand words in context.



Reading Section Continued

The Reading Test will assess command of evidence:

- ▶ The use of evidence: Students will need to find the evidence in a passage that best supports the answer to a previous question or that serves as the basis for a reasonable conclusion.
- ▶ The analysis of an argument: Students will need to identify the way authors use evidence to support their claims.
- ▶ The analysis of quantitative information: Students will need to examine informational graphics and relate the information conveyed by them to the information and ideas conveyed through words.

Reading Section Continued

Informational Graphics

- ▶ The Reading Test includes two passages accompanied by one or two related graphics (for example, charts, graphs, or tables). Students will be asked to interpret a graphic's meaning and make connections between graphic and passage.

<https://collegereadiness.collegeboard.org/sample-questions/reading>

PSAT Writing and Language

- ▶ The Writing and Language Test puts students in the role of an editor improving a written passage. Most questions ask students to decide which, if any, of the three alternatives to an underlined part of a passage most improves it.
- ▶ All Writing and Language Test questions are multiple choice and based on passages.
- ▶ Some passages are paired with informational graphics such as charts, graphs, and tables.
- ▶ Prior topic-specific knowledge is never tested.
- ▶ No mathematical computation is required.

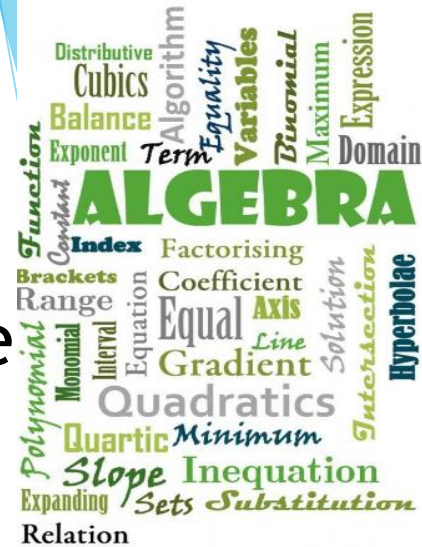


Writing and Language Continued

- ▶ Questions support an emphasis on analysis in history/social studies passages, and interpretation of words in context and command of evidence in science passages.
- ▶ Some questions will test students on the expression of ideas: Students improve topic development, organization, and rhetorical effectiveness.
- ▶ Some questions test students on their understanding of standard English conventions. Students edit text so that words, phrases, sentences, and punctuation are used appropriately and consistent with the practices of standard written English.
- ▶ Some questions assess how well students understand words in context. Students improve passages by using words carefully and with purpose.
- ▶ Students' command of evidence is also assessed by some questions. These questions assess how well students revise a passage to improve the way it develops information and ideas.

PSAT Math Section

- ▶ Most math questions will be multiple choice, but some will be student-produced responses (grid-ins).
- ▶ The Math Test is divided into two portions: Math Test - Calculator and Math Test - No Calculator.
- ▶ Some parts of the test present students with a scenario and then ask several questions about it.



Math Section Continued

The Math Test is characterized by questions that:

- ▶ Test mathematical reasoning reflecting the work students are doing in classrooms across the country.
- ▶ Emphasize fluency and understanding.
- ▶ Ask students to solve problems grounded in science, social science, career scenarios, and other real-life contexts.
- ▶ The test covers all math practices, with an emphasis on problem solving, modeling, using appropriate tools strategically, and recognizing and using algebraic structure.

Math Section Continued

Student-Produced Response Questions

- ▶ 17-22 percent, depending on the assessment – are student-produced response questions (grid-ins). Instead of multiple choice, students are required to solve problems and enter their answers in the grids.
- ▶ Sometimes students will answer several questions about the same scenario, allowing them to dig in to a situation and model it mathematically. These multistep applications reflect the complexity of real-life problem solving in science, social science, and career contexts.

Math Section Continued

- ▶ Mark no more than one circle in any column.
- ▶ Only answers indicated by filling in the circle will be scored (no credit for anything written in the boxes located above the circles).
- ▶ It doesn't matter in which column students begin entering their answers to receive credit.
- ▶ The grid can hold only four decimal places and can only accommodate positive numbers and zero.
- ▶ Unless a problem indicates otherwise, answers can be entered on the grid as a decimal or a fraction.
- ▶ Fractions like $\frac{3}{24}$ do not need to be reduced to their lowest form. All mixed numbers need to be converted to improper fractions before being recorded in the grid.
- ▶ If the answer is a repeating decimal, students must grid the most accurate value the grid will accommodate.

PSAT Test Taking Tips

- ▶ Take the practice test on College board to be familiar with the types of test items.
- ▶ Get plenty of rest the night before.
- ▶ Eat a good breakfast.
- ▶ Bring a good attitude to the test.
- ▶ Skip items which are hard and come back to them last, but don't leave any undone.
- ▶ Bring an approved calculator.

During January - Results Reports

Hi, Student

School Name: School Code:

2015, Grade: 11th Grade

Student I.D. #99999

Optional Code: N/A

Access Code: XXX00XXXXX

 CollegeBoard /  NATIONAL MERIT
SCHOLARSHIP CORPORATION

PSAT/NMSQT[®]

Preliminary SAT/National Merit Scholarship Qualifying Test

Your Score Report

Go to: Student Support and then, Counseling and Guidance
Click on: ACT/SAT Testing

The screenshot shows the Paulding County School District website. The header includes the district name and navigation links for SIGN IN and REGISTER. A secondary navigation bar contains links for HOME, OUR DISTRICT, ACADEMICS, DEPARTMENTS, STUDENT SUPPORT (highlighted), BOARD OF EDUCATION, EMPLOYMENT, FOR PARENTS, and FOR STAFF. Below this are icons for CALENDAR, ENROLLMENT, PARENT PORTAL, and CANVAS.

The breadcrumb trail reads: [Home](#) ▶ [Student Support](#) ▶ [Counseling Information](#) ▶ [ACT/SAT Testing](#).

Under **ACT and SAT Information**, there are links for [New SAT Exam Overhaul](#) and [The New SAT, What You Need to Know!](#).

Important Links:

- [ACT Registration](#)
- [FREE SAT Practice-Khan Academy & The College Board](#)
- [PSAT](#)
- [SAT Registration/The College Board](#)

On the right, the **CONNECT WITH US** section includes social media icons for Twitter and Facebook. Below it, the **Counseling Information** dropdown menu is open, with a blue arrow pointing to the [ACT/SAT Testing](#) option.

- ▶ [ACT/SAT Testing](#)
- ▶ [Advisement](#)
- ▶ [Career Planners](#)
- ▶ [Celebrating Diversity](#)
- ▶ [Dual Enrollment/Move on When Ready](#)
- ▶ [Elementary School Counseling](#)
- ▶ [Financial Aid 101 & Scholarships](#)
- ▶ [GAfutures](#)
- ▶ [High School Counseling](#)
- ▶ [Home School Information](#)
- ▶ [Homeless Education Program](#)
- ▼ [Just Keep Peace](#)
- ▶ [Middle School Counseling](#)
- ▶ [Mission Possible](#)
- ▶ [Overview](#)
- ▶ [Resources for Support of Students](#)

References

- ▶ www.collegeboard.org
- ▶ www.khanacademy.org
- ▶ <https://collegereadiness.collegeboard.org>
- ▶ <https://collegereadiness.collegeboard.org/sample-questions/reading>
- ▶ <https://collegereadiness.collegeboard.org/sample-questions/writing-language>
- ▶ <https://collegereadiness.collegeboard.org/sample-questions/math>