

# ATTENDANCE BOUNDARY REVIEW

ELEMENTARY & MIDDLE SCHOOL

COMMUNITY CONVERSATION 3 – FINAL RECOMMENDATIONS

MARCH 18, 2021



## FOR INTERACTION DURING THIS COMMUNITY CONVERSATION

- Open a new browser tab
- Got to [www.slido.com](https://www.slido.com)
- Enter Event Code: **#32386**

slido

# RECAP: COMMUNITY CONVERSATIONS ROUND 2:

JANUARY 21, 2021 (ES)

FEBRUARY 11, 2021 (MS)

- More than 300 Online Viewers/Participants
- Slido results on Planning For The Future web site.
- More than 220 emails to [planningforthefuture@paulding.k12.ga.us](mailto:planningforthefuture@paulding.k12.ga.us)

slido

# WWW.PAULDING.K12.GA.US/ PLANNINGFORTHEFUTURE

- Tonight's PowerPoint Presentation
- Maps with final recommendations


OUR SCHOOLS    Pathways    Career Options    Transition    Find It Fast

Paulding County School District  
Engage. Inspire. Prepare

Home    Our District    Academics    **Departments**    Board of Education    Employment


Home » Departments » Operations » Planning For The Future » District Boundary Review

Edit Page

 Planning for the Future of Paulding County Schools


**ATTENDANCE BOUNDARY REVIEW**


Video Playlist - Click Upper Right Corner Button


 Elementary School Community Conversation (Abney/Russom/Shelton)


Click upper right corner of video window to see the playlist. Skip ahead to the start of the meeting.


**Boundary Maps**

 Elementary School Boundary Map

 Middle School Boundary Map

 High School Boundary Map

 Middle School Subdivision Map

 Elementary School Subdivision Map

**Community Conversation 1**

**MIDDLE SCHOOL 1/19**

Middle School Community Conversation Powerpoint (01/19/2021)

**FAQ DOWNLOAD:** Middle School Attendance Boundary Review

Community Conversation Poll Results


**ELEMENTARY SCHOOL 1/21**

Elementary School Community Conversation Powerpoint (01/21/2021)

**FAQ DOWNLOAD:** Elementary School Attendance Boundary Review

Community Conversation Poll Results

**FAQ Middle School**



**Board Policies**

JSCCA - Student Assignment to Schools

JSCCA-II Student Assignment to Schools


**Documents / Presentations**

Attendance Boundary Review Process

SCOE Presentation (12/10/2020)

Introductory Letter for Abney, Russom & Shelton Elementary Schools (12/10/2020)

Introductory Letter for McClure & Moses Middle Schools (12/10/2020)

 Attendance Boundary Review Presentation for Board of Education (11/17/2020)



# ATTENDANCE BOUNDARY REVIEW

## GUIDING PRINCIPLES

Prioritize	Prioritize equitable access to high-quality instruction for all children.
Evaluate	Evaluate through a District-wide perspective by considering individual school capacities and student population projections to alleviate overcrowded schools and balance enrollment for now and the future.
Minimize	Minimize disruption to the greatest number of students.
Comply	Comply with Board Policy: JBCCA and Board Regulation: JBCCA-R, associated state and federal regulations

## CRITERIA

### Primary Criteria

Geographic Proximity  
Instructional Capacity  
Projected Enrollment

### Secondary Criteria

*When primary criteria indicate more than one option, options are evaluated based on, but not limited to:*

Safety and Traffic Patterns  
Previous Redistricting  
Balancing of Special Programs  
School Feeder Alignment  
Intact Neighborhoods  
Efficient and Economical Operations

### Students Impacted By Attendance Zone Modifications

When attendance zone changes are made, **students impacted may have the opportunity to remain in the school which they currently attend** provided that there is permanent classroom space available, or, enroll and attend the school in their approved attendance zone. Students impacted by redistricting will be given first priority over any other choice opportunities and hardship transfers provided within these guidelines.

- Students will be prioritized by grade level should there be permanent classroom space available.
- Transportation will not be provided.



# Russon Elementary Addition

An aerial photograph showing a large, rectangular building under construction. The building has a white roof and brick walls. It is situated next to a green-roofed building. In the background, there is a baseball field and a residential area with houses and trees.

## 16-CLASSROOM ADDITION

- 2 integrated STEAM labs (Science, Technology, Engineering, Arts & Math)
- 1 fully equipped computer lab
- 14 general classrooms
- Administrative office
- LED lighting
- State-of-the-art building automation
- Enclosed corridor connects to main building





## Moses Middle School

### 22-Classroom Addition

- 2 integrated STEM labs (supersized science labs with space for individual and group work)
- Fully equipped computer lab
- Special Education suite
- 18 general classrooms
- Health clinic
- Administrative office
- LED lighting
- State-of-the-art building automation
- Enclosed corridor connects to main building
- Additional parking



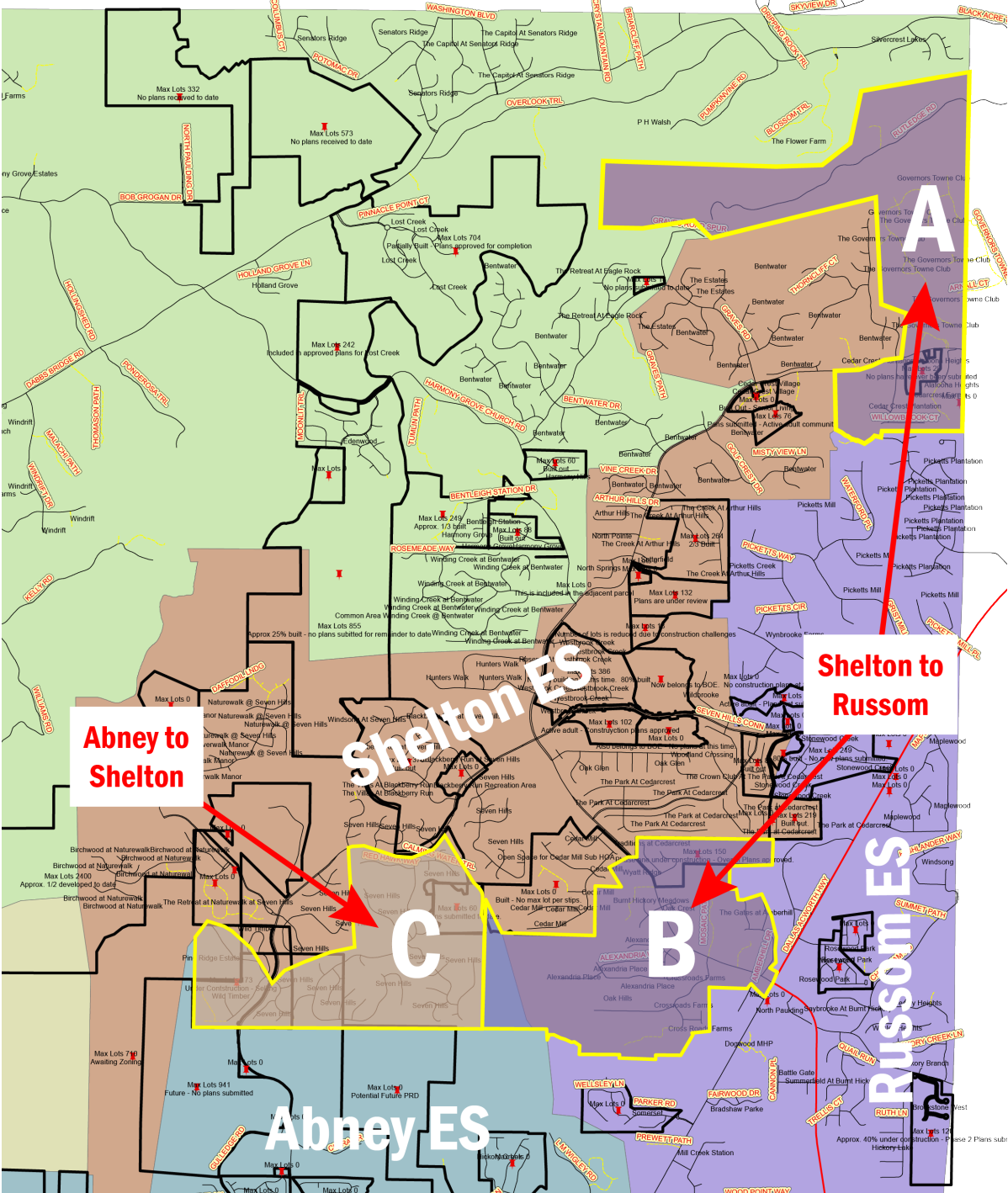
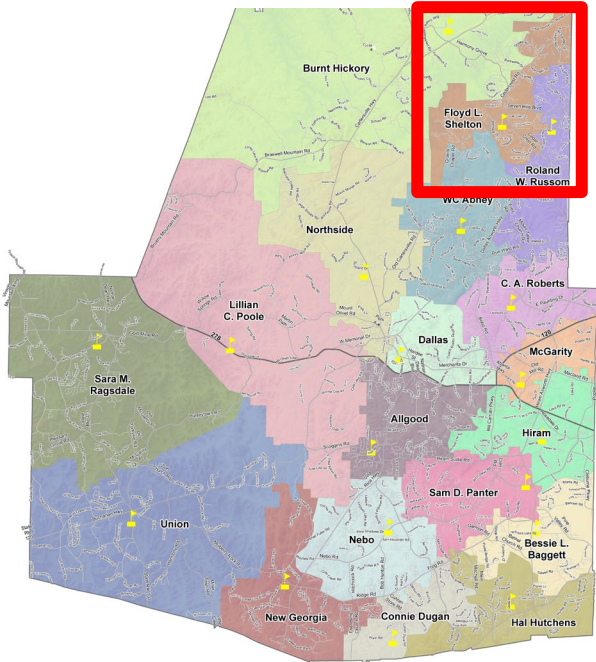
---

# ELEMENTARY SCHOOL RECOMMENDATIONS



# ELEMENTARY SCHOOL RECOMMENDATIONS

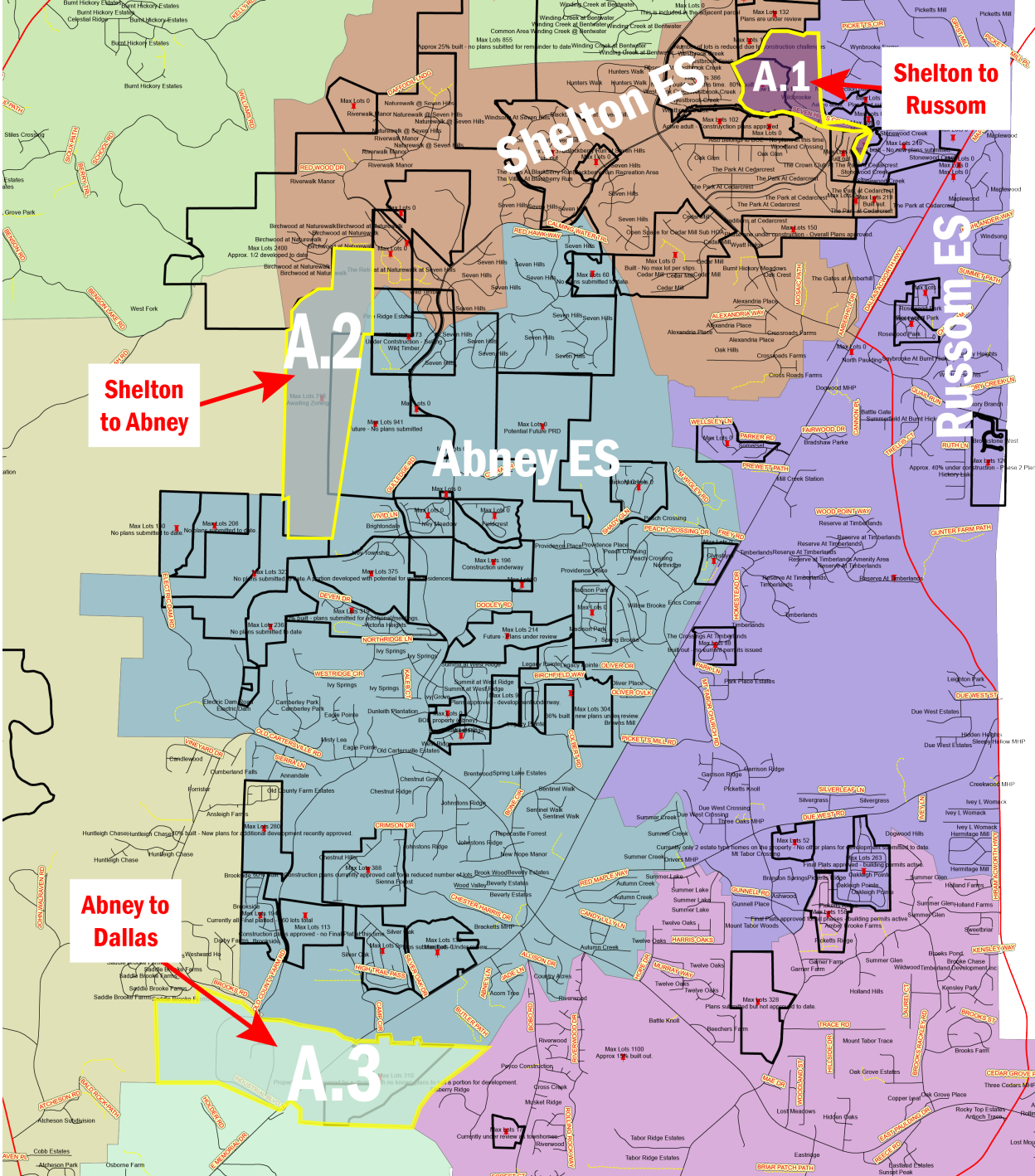
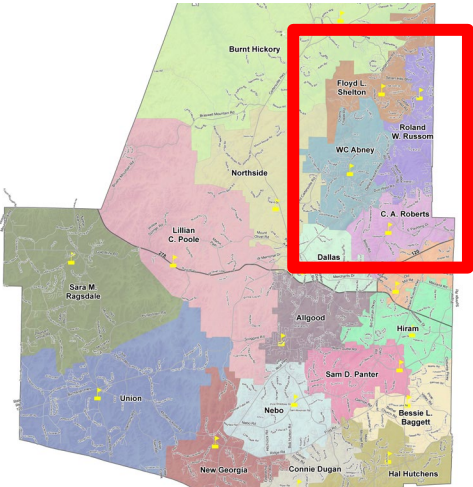
- Shelton ES ➡ Russom ES
- Abney ES ➡ Shelton ES



# ES ADMINISTRATIVE REASSIGNMENTS

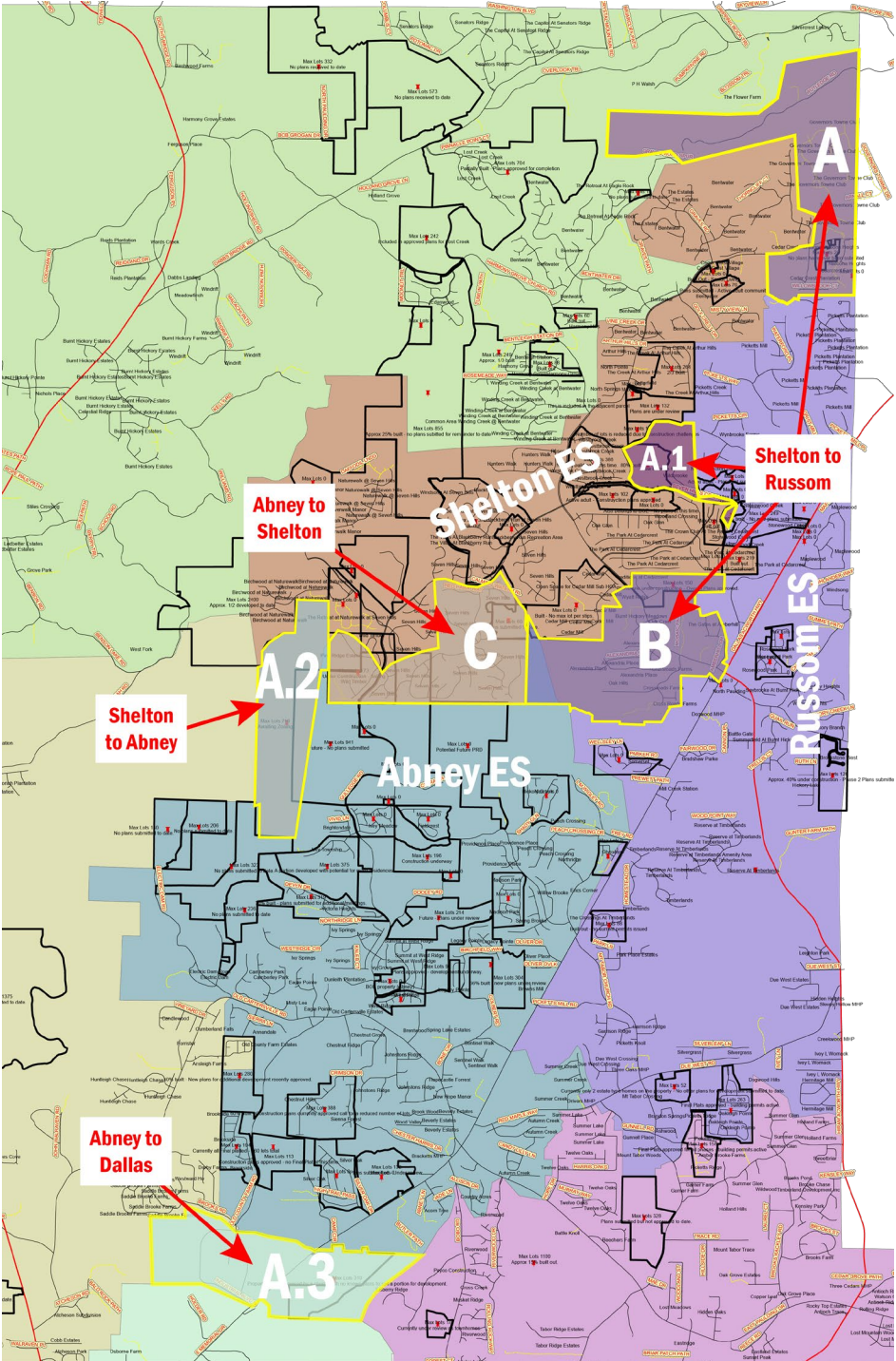
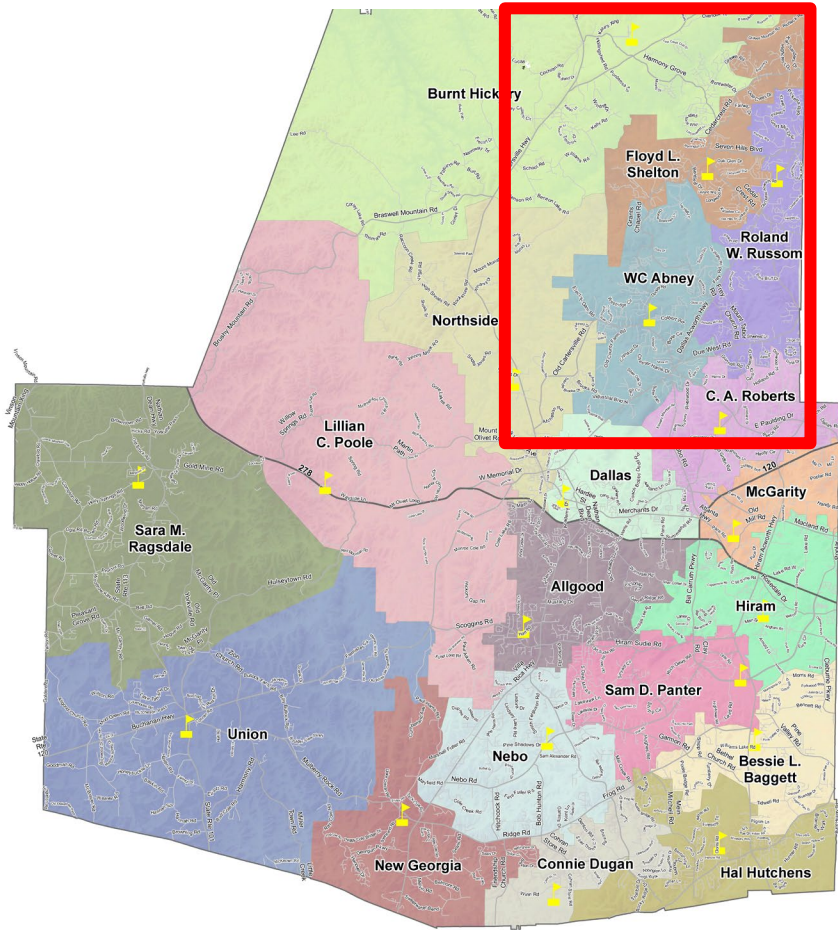
- Shelton ES ➡ Russom ES
- Shelton ES ➡ Abney ES
- Abney ES ➡ Dallas ES

(Undeveloped or under-development tracts – no students currently)





# ALL ELEMENTARY SCHOOL RECOMMENDATIONS





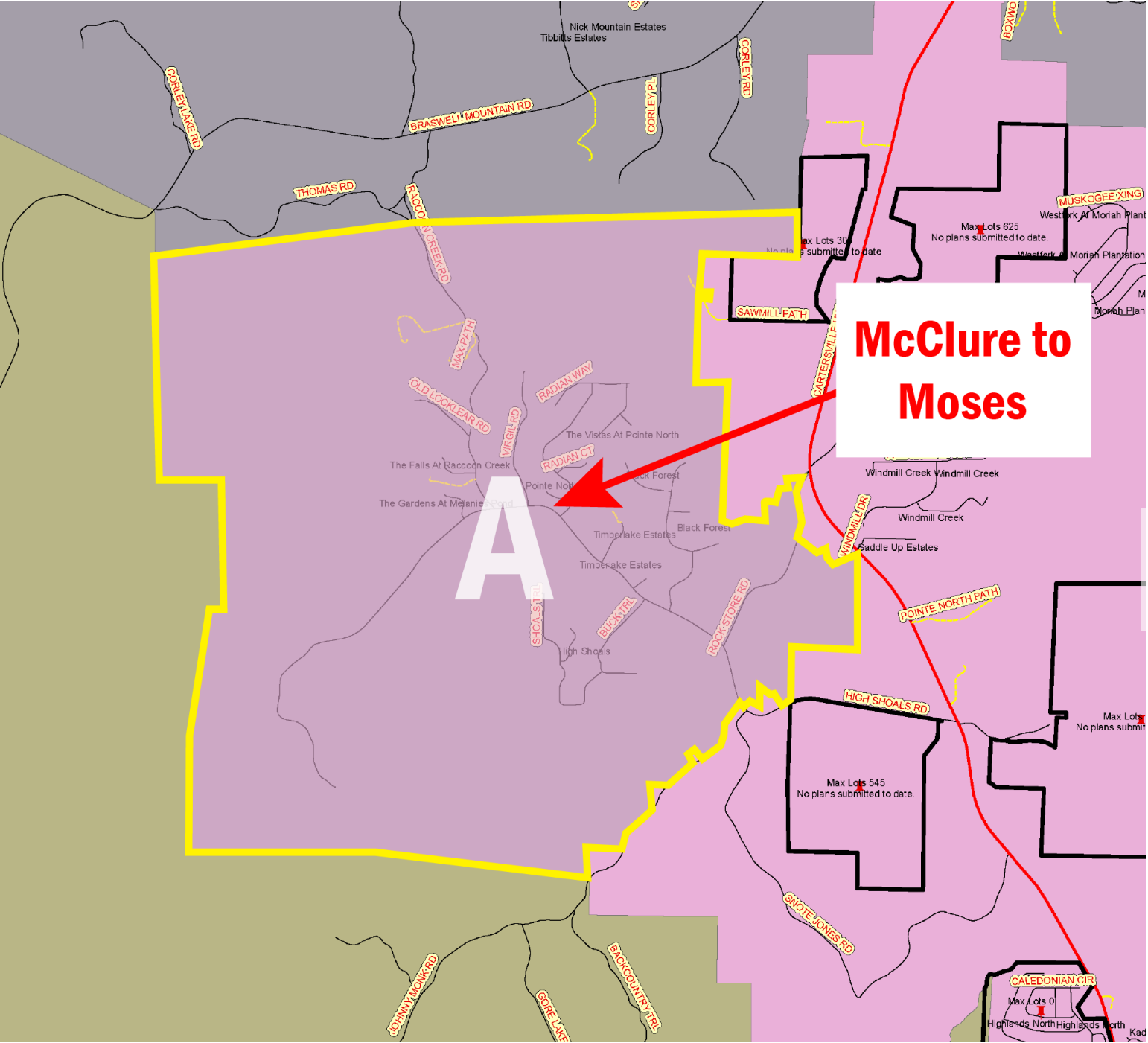
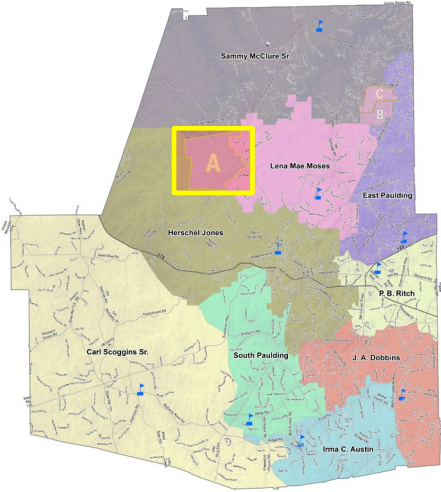


# MIDDLE SCHOOL RECOMMENDATIONS



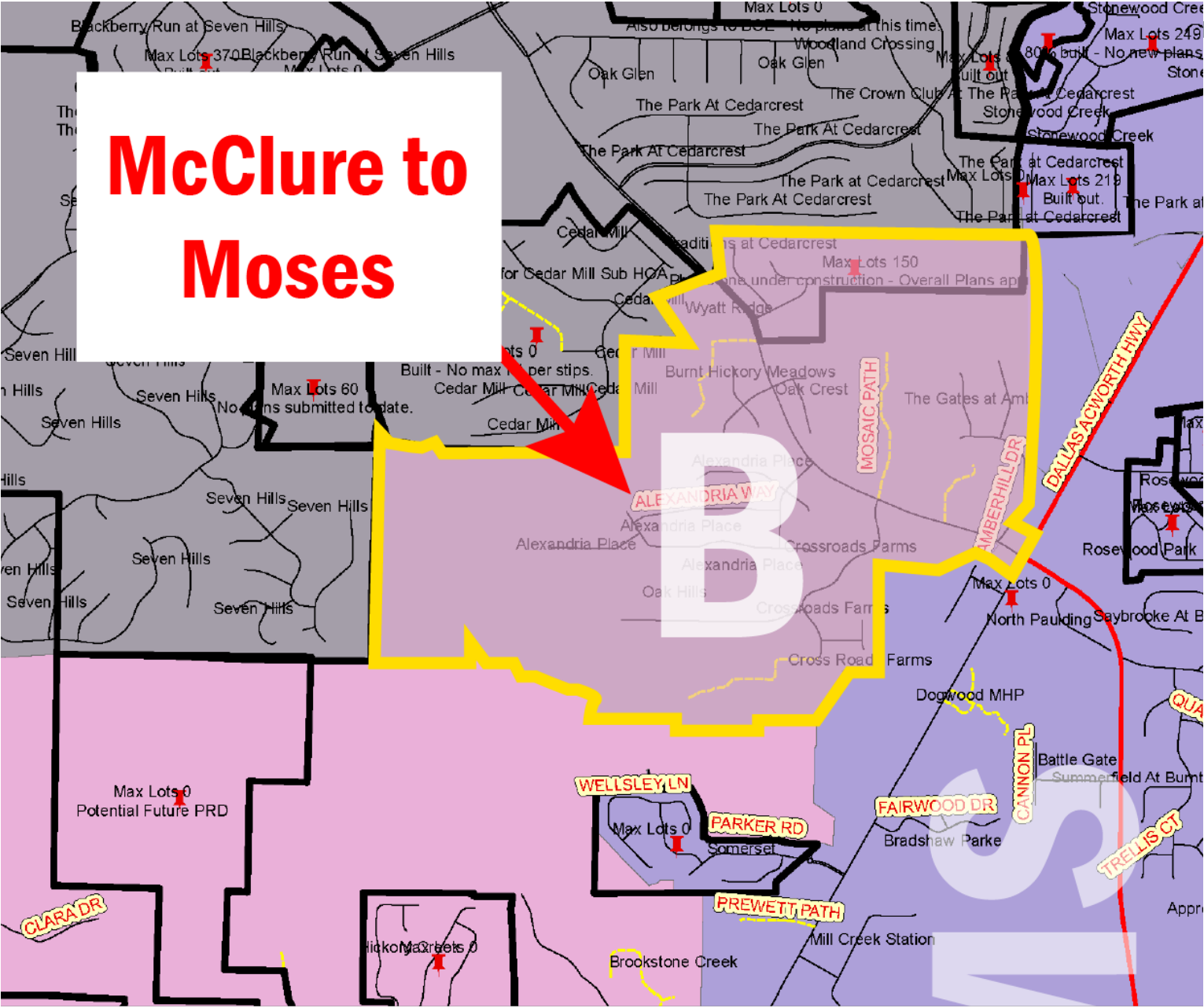
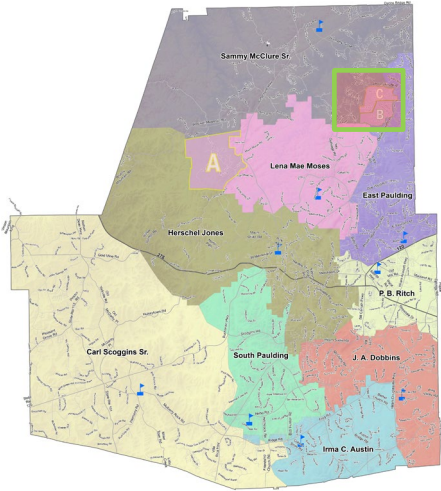
# MIDDLE SCHOOL RECOMMENDATIONS

- McClure MS  
↓  
Moses MS



# MIDDLE SCHOOL RECOMMENDATIONS

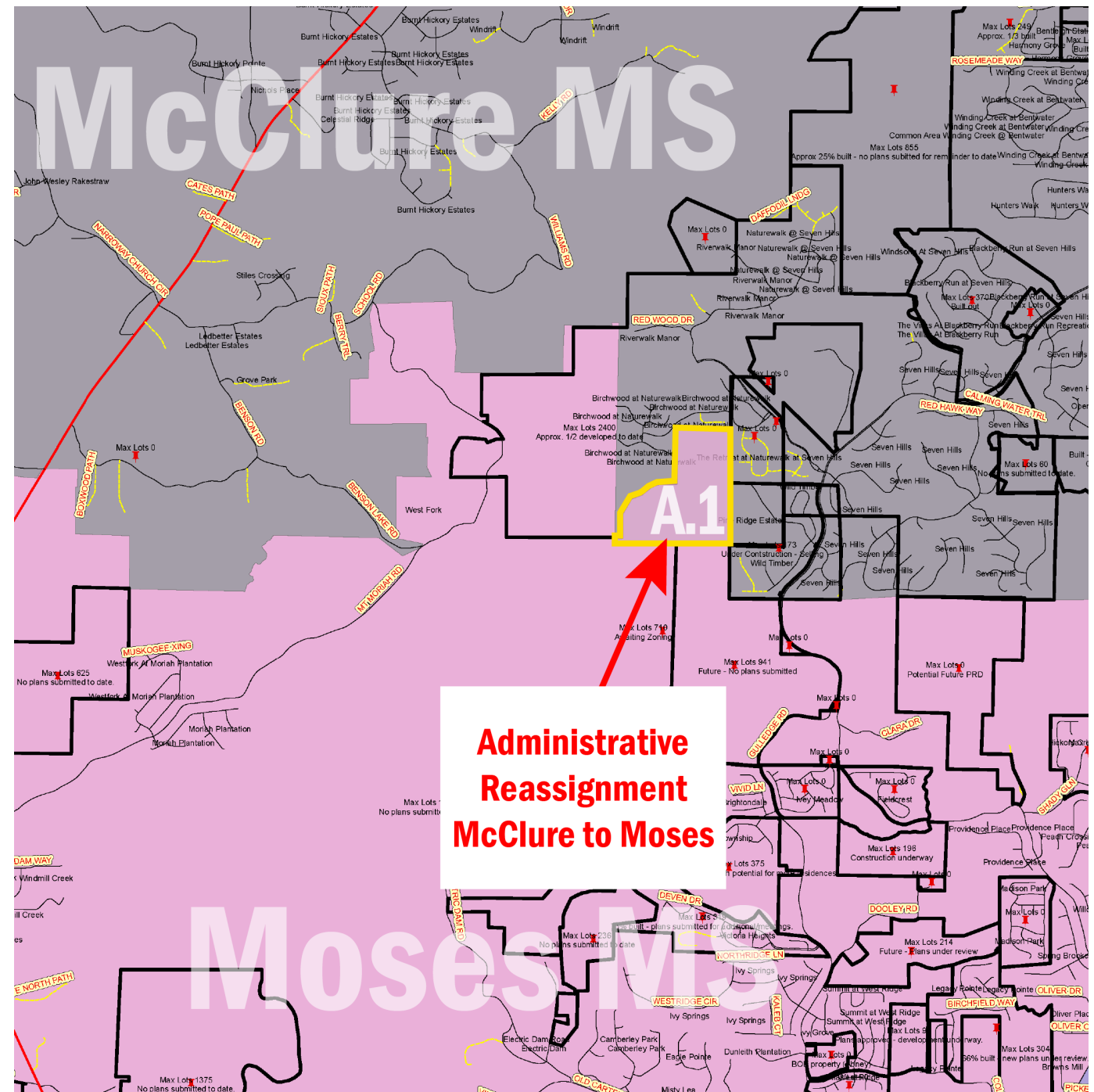
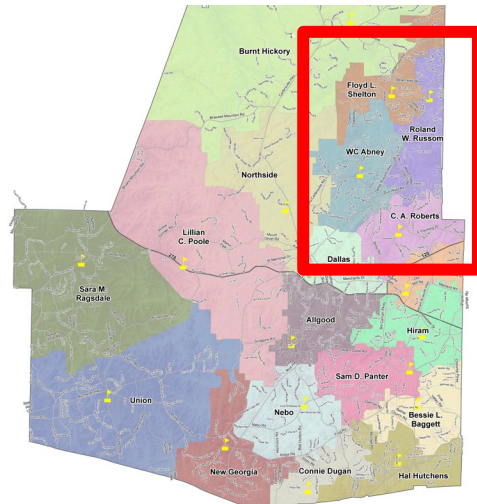
- McClure MS  
↓  
Moses MS



# MS ADMINISTRATIVE REASSIGNMENT

- McClure MS ➔ Moses MS

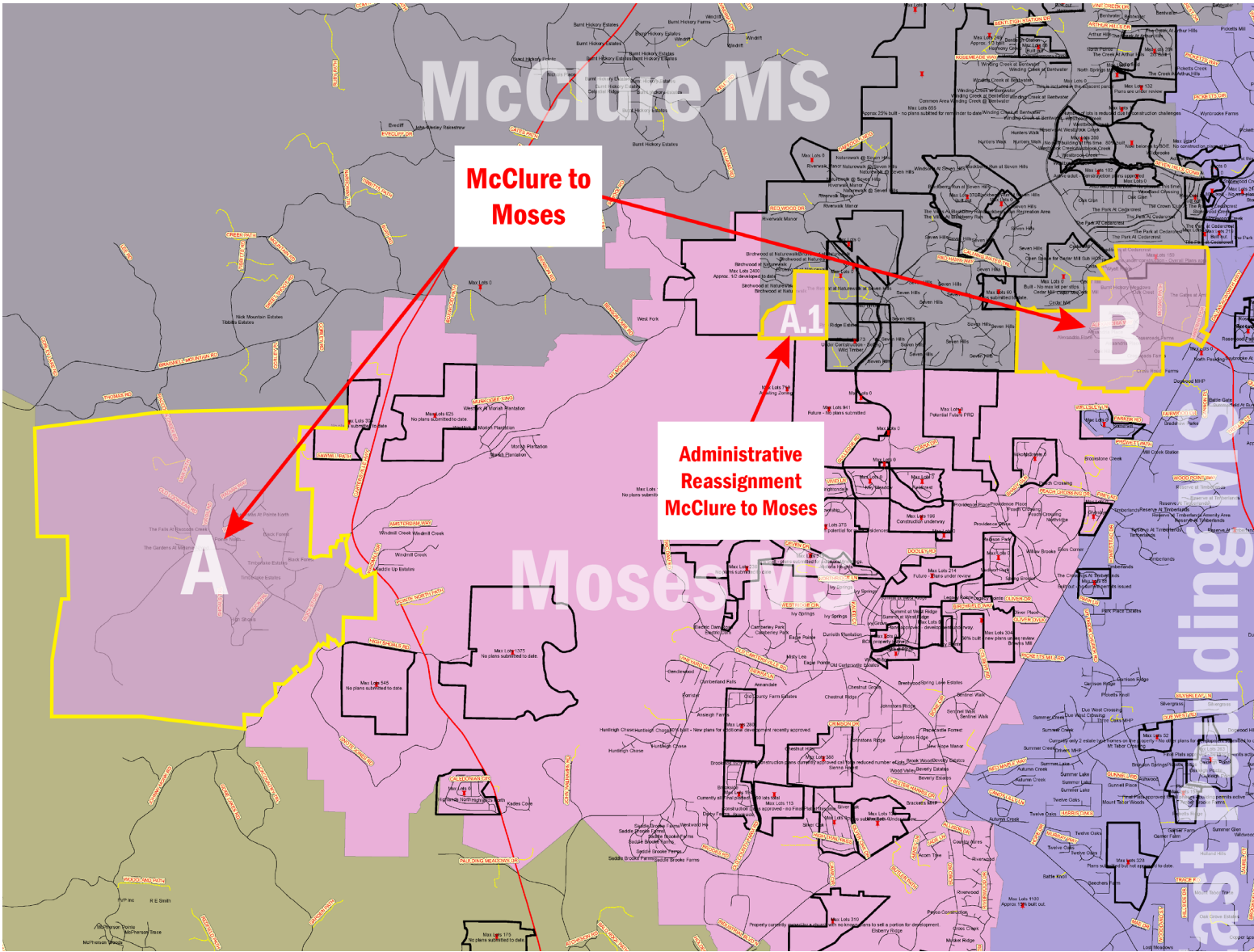
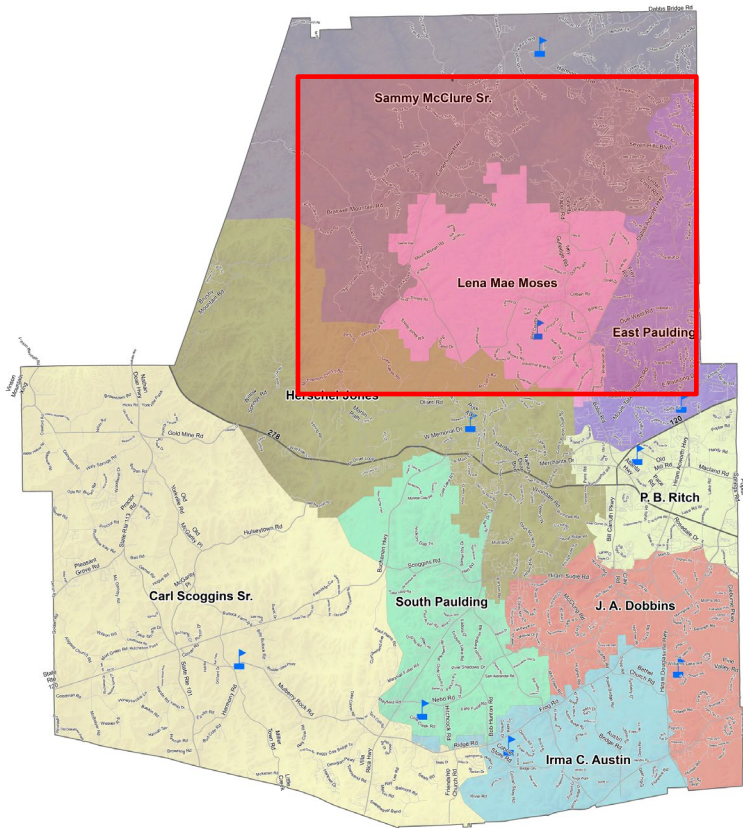
(Undeveloped or under-development tract – no students currently)





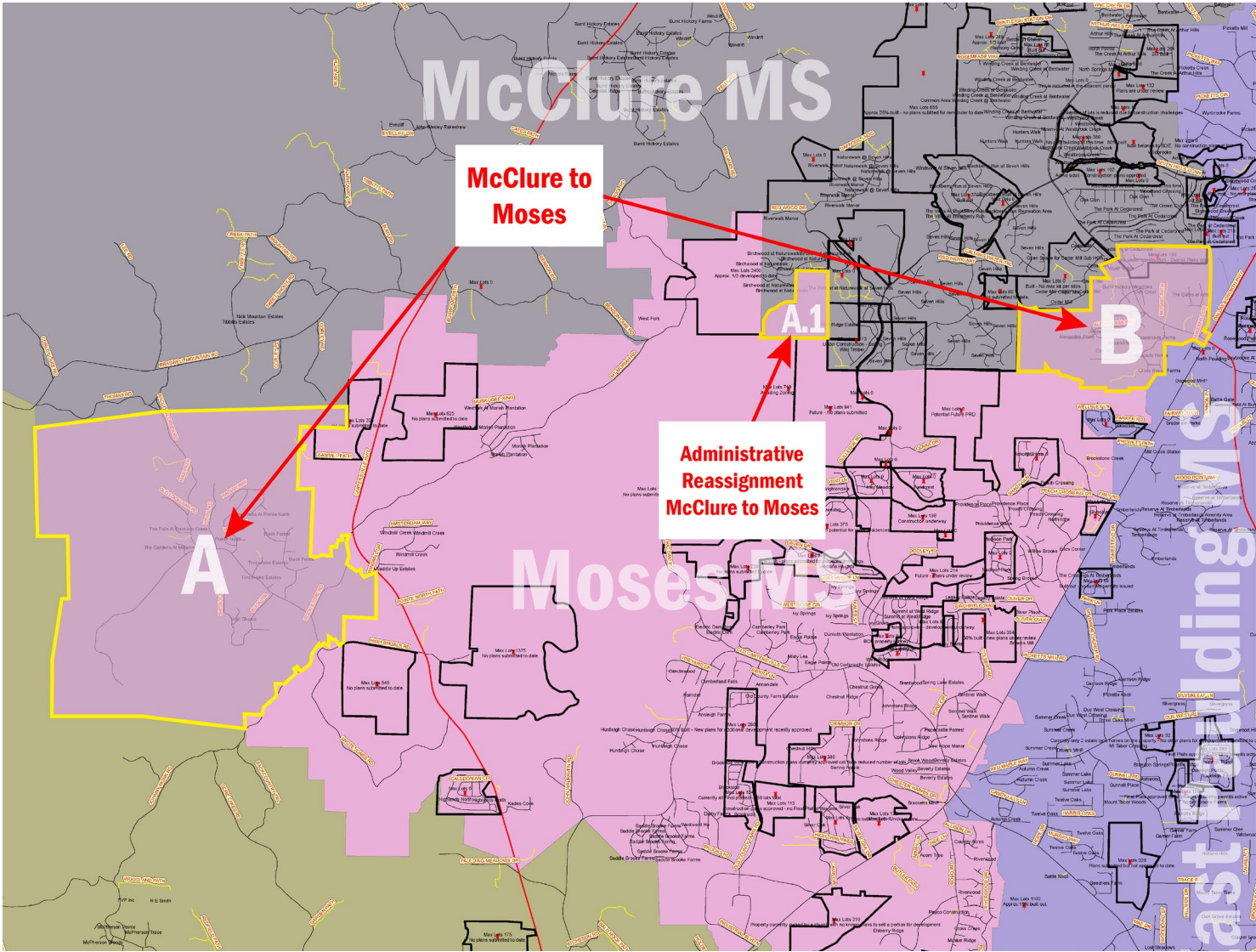
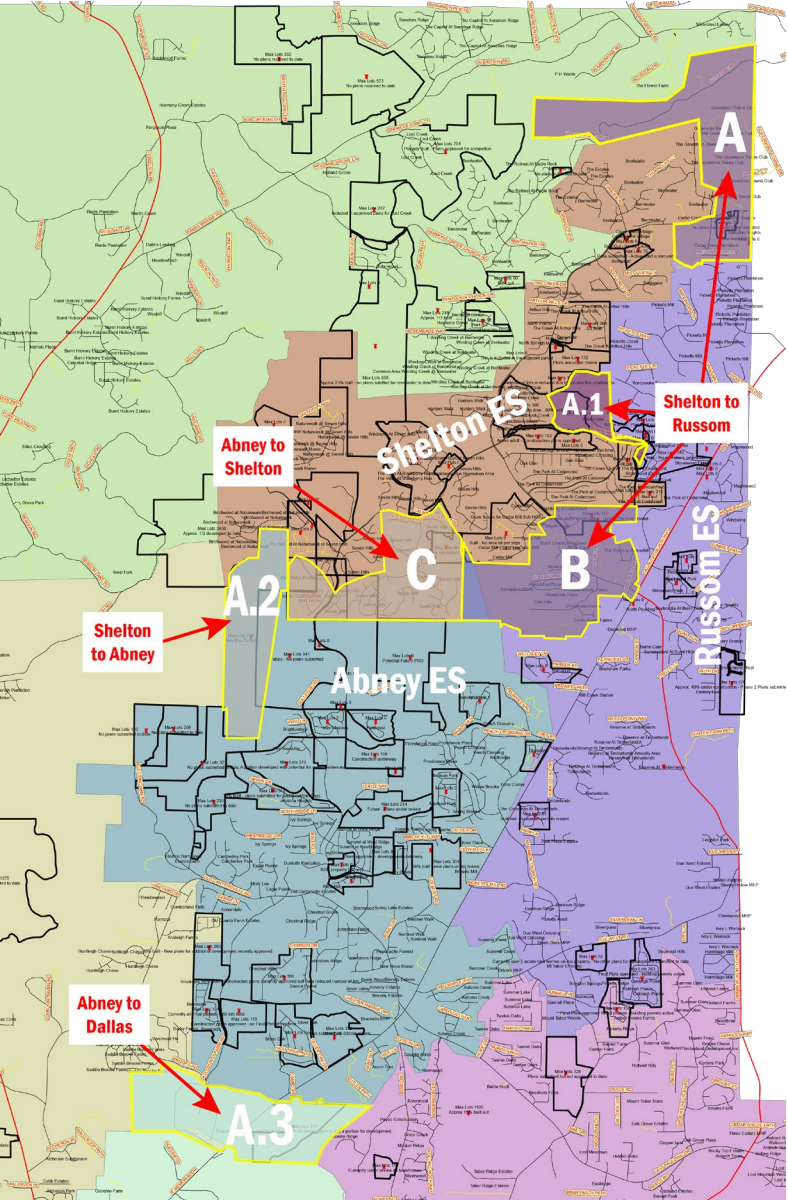
# ALL MIDDLE SCHOOL RECOMMENDATIONS

- McClure MS  
↓  
Moses MS





# ALL ELEMENTARY & MIDDLE RECOMMENDATIONS



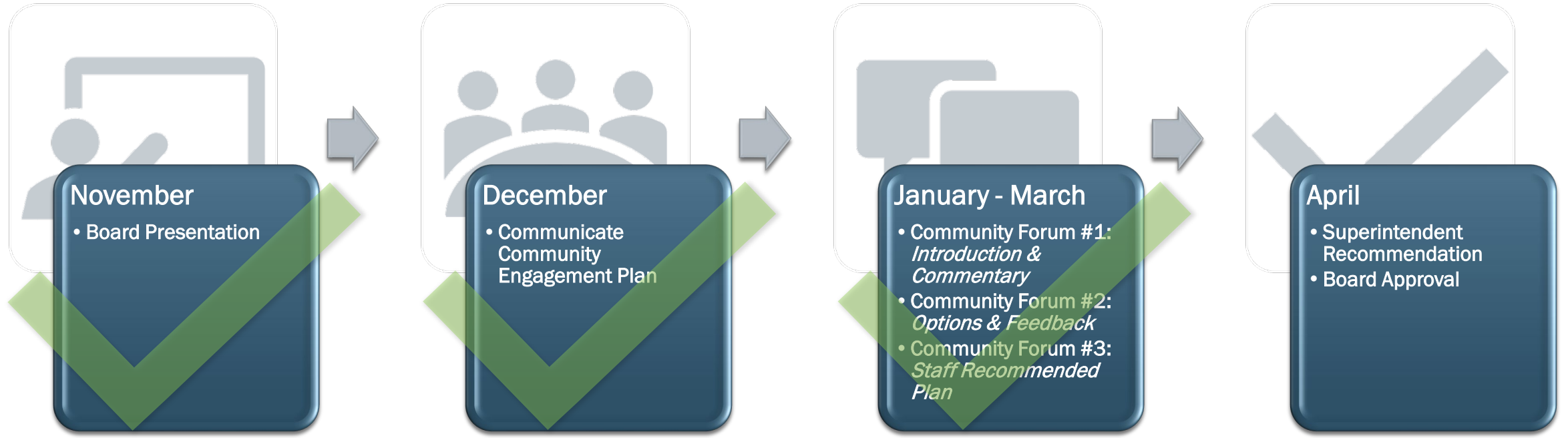
## HOW YOU CAN PROVIDE FEEDBACK:

- [www.slido.com](http://www.slido.com)
- Enter Event Code: **#32386**

**Slido will remain open one hour after Community Conversation**

**Email us at:** [planningforthefuture@paulding.k12.ga.us](mailto:planningforthefuture@paulding.k12.ga.us)

# ATTENDANCE BOUNDARY REVIEW: TIMELINE



**MARCH 23:** Recommendations presented to BOE

**APRIL 13:** BOE vote



PD

Planning

FOR  
THE



For Success Today and Tomorrow

Est. 1872

FUTURE

**QUESTIONS/COMMENTS**