



### Ecology Basics & Feeding Relationships

**Georgia Performance Standards**  
SB4b. Explain the flow of energy and matter through the ecosystem.

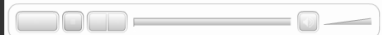

Created By: Christy Dion



Jan 14-5:37 PM



### Biotic vs. Abiotic



After watching the clip explain the difference between "biotic and abiotic" and at least two interactions between these factors.

Jan 15-3:12 PM




### Organization:

Organism, Population, Community, & Ecosystem

Define each of the terms above, during the video clip.

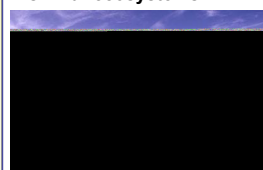


Jan 14-5:45 PM




### Biome & Biosphere

**Biome** - a collection of similar ecosystems.



**Biosphere** - the portion of the earth that supports life.



Create an analogy for "biome" and "biosphere."

Jan 15-3:07 PM

**E.Q. How do organisms get their energy?****Think-pair-share**

- 1) Take "one minute" - write down three ways you think different organisms obtain energy.
- 2) Discuss for "30 seconds" with your neighbor, your answers and come up with one you want to share with the class.
- 3) Share your answers with class, we will revisit them at the end of class.

Jan 15-3:18 PM

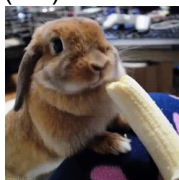
**Autotrophs****(A.K.A. "Producers")**

- Produce their own food
- Photosynthesis/Chemosynthesis (a couple of processes)
- Example: Plants, some bacteria, phytoplankton.
- **Create an "analogy" for "autotrophs" (self-feeders)**

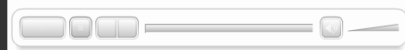
Jan 15-3:25 PM

**Heterotrophs****(A.K.A. "Consumers")**

- Need to consume (eat) their food
- Herbivores
- Carnivores
- Omnivores
- Detritivores
- Decomposers
- **Create an "analogy" for "Heterotrophs"**



Jan 15-3:32 PM

**Consumers****(Herbivores, Carnivores, Omnivores)**

After watching the video clip, define herbivore, carnivore, and omnivore. Give an example of each type of consumer.

Jan 15-3:36 PM

Detritivores & Decomposers

Watch the video clip: then define "detritivores & decomposers" and create an analogy for both.


Decomposers and Detrivores

Photo by: [unclear]

Jan 15-3:49 PM

Closing

Revisit your "think-pair-share" activity, write at least two things you did not include when you completed this activity that you learned during this lesson. BE PREPARED TO SHARE!!!



Jan 15-3:49 PM

Resources

1) G.O. (low level)

2) G.O. (mid-high level)

3) Extended notes (specialized notes for ESEP)

Jan 15-4:16 PM

## Attachments

---

Ecology Basics & Feeding Relationships G.O. Dion 2015 (low).docx

Ecology Basics & Feeding Relationships G.O. Dion 2015 (mid-high).docx

Ecological Organization & Energy extended notes - Dion 2015.docx